

SitaWare Frontline

Situational awareness in tough environments

- Swift to configure and deploy
- Transferable between vehicles in minutes
- Exceptional performance over intermittent, low bandwidth tactical radio networks
- Speeds up and supports the military decision making process
- No-nonsense, intuitive interface
- Simpler through life support

SitaWare Frontline is a step forward in battle management software that has been developed together with military commanders returning from Afghanistan to address real world Command and Control (C2) challenges. It has been specifically designed for troops operating in tough environments, where a clear operational view with rapid updates of friendly forces, enemy positions and the latest plan of action is absolutely essential.

Built with deployment and management in mind

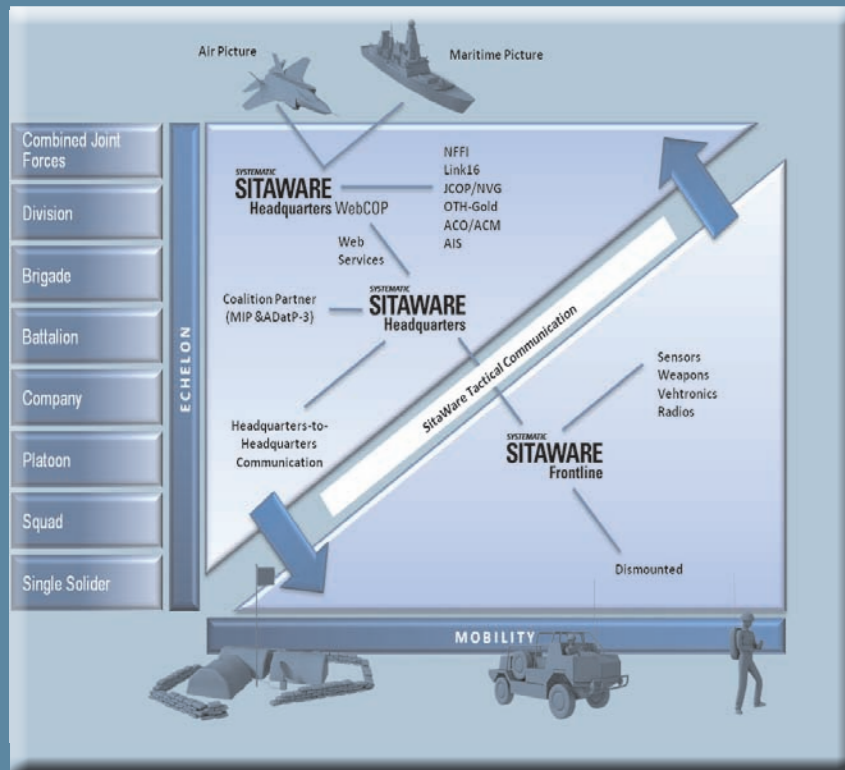
The software has a unique two-part design – a user application and a vehicle application – which has the benefit of making it extremely simple to deploy and very easy to maintain. The user application makes SitaWare Frontline truly portable: With the ability to (optionally) store all mission data on a secure USB key, users can plan, execute and change missions without being tied

to the vehicle. This mobility also allows commanders to change location quickly whilst automatically remaining visible in the Friendly Force Picture and, if necessary, to quickly destroy mission data in an emergency.

Existing communications equipment, onboard management systems and sensors are interfaced with the vehicle application; consequently any change to the mission data does not require the vehicle software to be updated, so unburdening IT specialists in the field.

Clarity, simplicity and high performance

SitaWare Frontline has been developed for use on touch screen devices and focuses on the essentials and basics of battle management. It has a highly intuitive interface that makes it easy to understand and simple to operate, even in physically cramped conditions. A variety of map options are available, including satellite imagery, and a 'clip and ship' capability from SitaWare Headquarters enables a portion of a map to be extracted and transferred to SitaWare Frontline.



The diagram above illustrates the Systematic suite of products and how they interact within the Command and Control structure.



Simplifying critical decision making

Managing the Command Flow with SitaWare and IRIS

The SitaWare Suite is a fully scalable Command & Control (C2) solution that fulfils core requirements straight out-of-the-box. When allied with the IRIS suite of messaging software it offers formidable interoperability at all levels of command and with coalition partners. SitaWare and IRIS are available off the shelf, fully scalable, easy to procure and rapidly deployable.

SitaWare Headquarters supports headquarters staff in planning and executing operations with a comprehensive set of tools for C2, operational planning and situational awareness - fulfilling all core requirements straight out-of-the-box.

SitaWare Headquarters WebCOP provides joint staffs and taskforce commanders with a detailed joint Common Operational Picture (COP) of large-scale operations using high performance web technologies.

SitaWare Frontline is designed for frontline commanders in tough environments, where a clear operational view with rapid updates of friendly force tracking (FFT) is absolutely essential, and has been built with deployment and management in mind.

IRIS Forms simplifies and structures the inputting and transfer of important military information, orders and reports, using simple-to-deploy interoperability standards.

IRIS Organisational Messaging provides a complete military message handling infrastructure, based on the well-known Microsoft Outlook® and Microsoft Exchange®, augmented with full support for military operating procedures.

IRIS Information Mapping is a specialist development tool which makes it easy for systems integrators to implement many different NATO and US data exchange standards within national command and control systems.

Unparalleled interoperability
SitaWare Frontline is a part of the SitaWare Suite of software, which is compliant with the latest standards, making it fully interoperable with other systems, coalition partners and NATO member countries. It works together with SitaWare Headquarters to provide a unified C2 system from the frontline to the highest level of command.

SYSTEMATIC SITAWARE

Denmark
Tel +45 8943 2000

United Kingdom
Tel +44 1276 675533
Tel +44 1529 303322

SYSTEMATIC IRIS

United States of America
Tel +1 703 385 7522
Free phone +1 888 665 IRIS

Finland
Tel +358 207 463 870

SYSTEMATIC SITAWARE



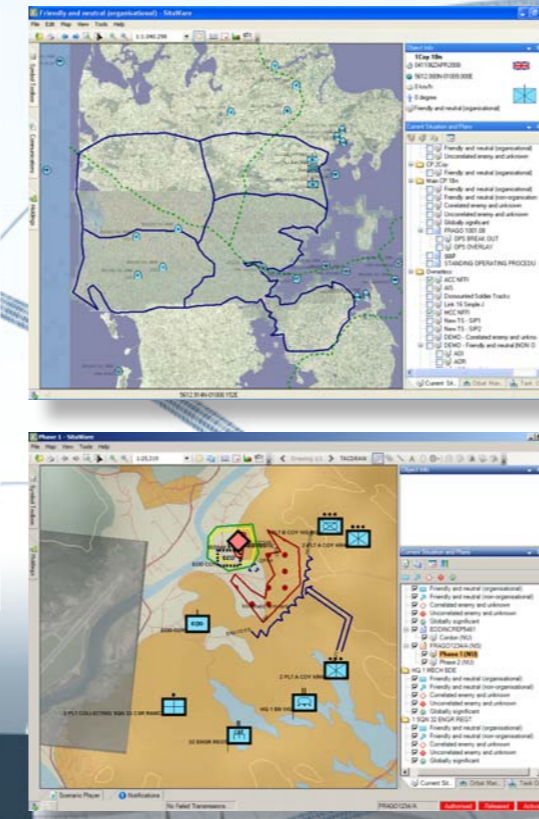
Battle Management
Situational awareness for enhanced force protection

SitaWare – information where your forces need it.

Effective action depends on the best possible situational awareness. SitaWare is a Command and Control (C2) solution that offers clarity, simplicity and high-performance that addresses real world C2 challenges at the frontline.

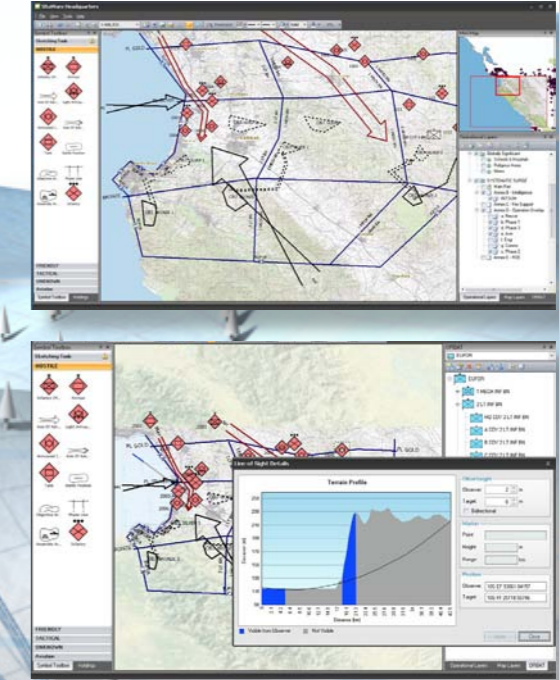
Joint Headquarters

SitaWare Headquarters not only allows for the creation and distribution of sophisticated plans and orders, but it also monitors the evolving situation and provides vital feedback to commanders on the operational and logistic situation confronting ground troops. Information is power and accurate trusted and timely information not only gains tactical advantage, but supports Force Protection. By utilising tried and tested software tools from the SitaWare Suite, the Headquarters is able to gain a comprehensive overview of unfolding events, not only at a strategic, but at operational and tactical levels too. SitaWare Headquarters is complemented by SitaWare Headquarters WebCOP which provides instant access to shared operational overviews.



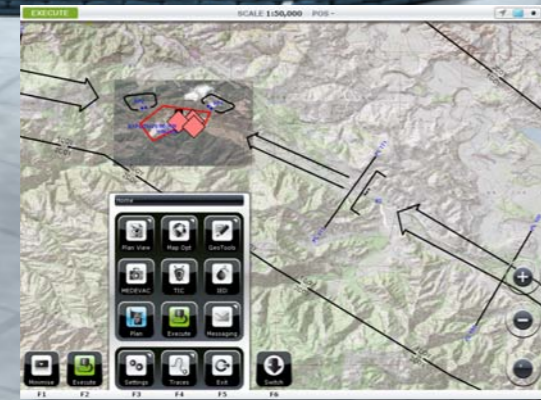
Tactical Operations Centre

SitaWare Headquarters enables Command staff, based at different locations, to participate in collaborative planning and the evolution of tactics and orders. Updates and decisions can be continuously distributed near real-time. The full overview of theatre operations, showing force activities as well as the resources available becomes much clearer. Staff can thus tailor their Common Operational Picture (COP) according to their needs within various areas of operational interest in both 2 or 3D. The system also allows for logistical reporting such as use of unit consumables and equipment which all contribute to unit capabilities. Also SitaWare Headquarters holds a situation record and playback capability for debriefing and after action reviews.



In-Vehicle Battle Command

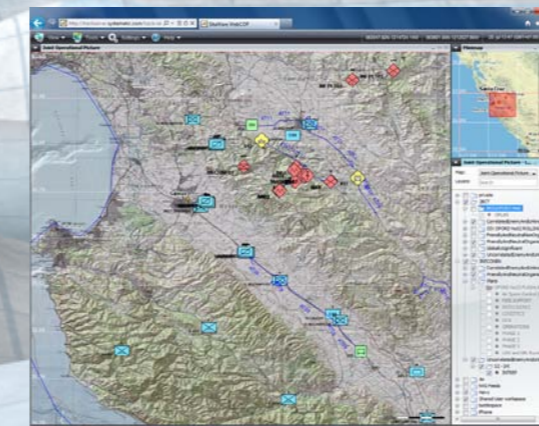
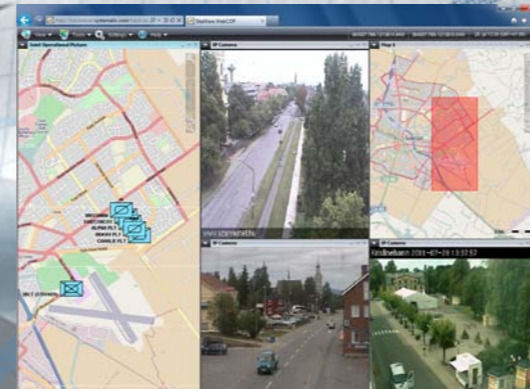
SitaWare Frontline is truly portable. With the application and data stored on a USB, should a frontline vehicle go unserviceable, it can simply be unplugged from the on-board computer and inserted into the computer of a different vehicle. It is not system reliant, and that leads to seamless operation as there is no need for installation. Tactical plans no longer come to halt with a loss of data and on the ground information.



SitaWare Frontline has been optimised for use with tactical radios. Using radio based comms with situational awareness tools and interoperability with other products from the SitaWare Suite delivers formidable information up the chain of command.

Coalition Command

SitaWare Headquarters WebCOP creates a unique tool when integrated with SitaWare Headquarters. By supporting contemporary military and civilian data feeds through all standard browsers, including Explorer, Firefox and Safari, the command situation simply becomes available to all authorised users in near real-time, along with plans and orders.



Dismounted Commander

SitaWare Frontline keeps commanders connected to information from the command network, even when they are out in the field using hand held devices. This versatile tool employs the same capabilities and user interfaces as used in-vehicle and gives dismounted commanders quick access to high-detail maps and satellite imagery of the area they are operating in, highlighting friendly and hostile units.

