

# SitaWare Headquarters WebCOP

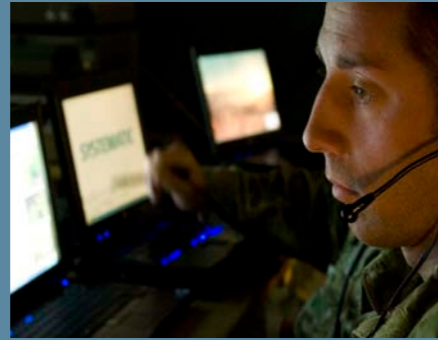
Situational awareness across all operational environments

- Processes high volumes of live tracks
- Uses standard web browser
- Improves information sharing
- Continuous alarm zone monitoring
- Displays live video feeds
- Large-scale situational awareness with drill-down capability

This is where Systematic's SitaWare Headquarters WebCOP breaks new ground: It is a high performance, scalable, cost effective solution which displays the COP in a standard web browser using its out-of-the-box support for military and civilian data feeds.

**Powerful solution, powerful performance**

SitaWare Headquarters WebCOP provides decision makers with a complete overview of any operating scenario. It is ideal for big-screen presentations, can even provide VIP access on a smart phone, and is also ideal for collaborative decision making involving joint and multinational forces. This helps eliminate mistakes, duplication and misunderstandings. Staff can also drill-down into any layer of information about any operation.

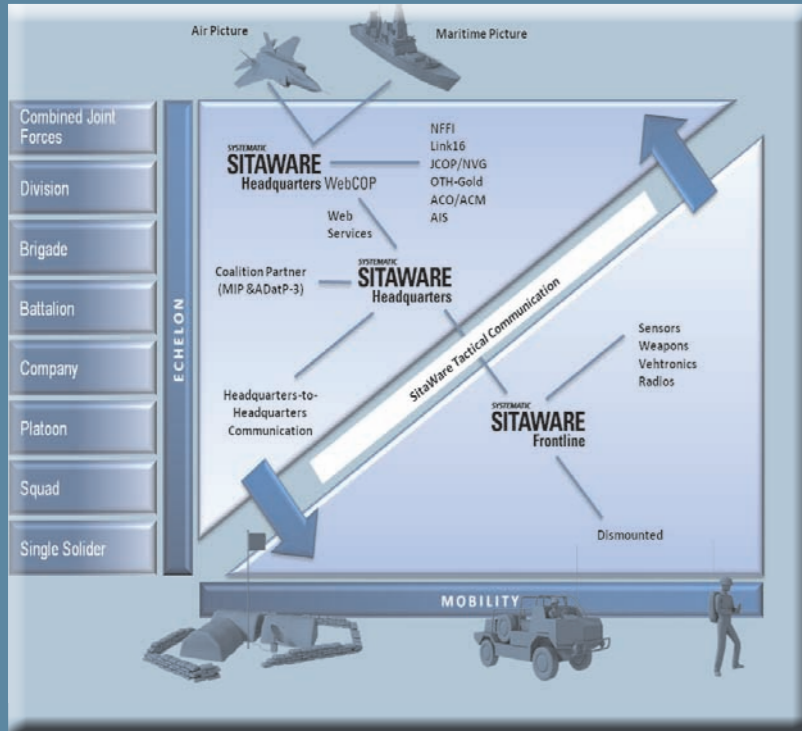


There is central access to all the data needed for planning, tasking, logistics and status management involving both your own forces and others.

Guard zones provide automatic alarms on possible threats or events of special interest – helping to ensure faster responses and better co-ordination during high tempo operations.

SitaWare Headquarters WebCOP is remarkably easy to use with an intuitive and compelling user interface that gets users up and running quickly. The system is quick to deploy, requires minimal training, and can be integrated with all other Systematic C2 products.

Its low bandwidth requirement also makes it possible to deploy Systematic SitaWare WebCOP on reduced capacity networks.



The diagram above illustrates the Systematic suite of products and how they interact within the Command and Control structure.

# Managing the Command Flow with SitaWare and IRIS

**The SitaWare Suite is a fully scalable Command & Control (C2) solution that fulfils core requirements straight out-of-the-box. When allied with the IRIS suite of messaging software it offers formidable interoperability at all levels of command and with coalition partners. SitaWare and IRIS are available off-the-shelf, fully scalable, easy to procure and rapidly deployable.**

**SitaWare Headquarters** supports headquarters staff in planning and executing operations with a comprehensive set of tools for C2, operational planning and situational awareness - fulfilling all core requirements straight out-of-the-box.

**SitaWare Headquarters WebCOP** provides joint staffs and task force commanders with a detailed joint Common Operational Picture (COP) of large-scale operations using high performance web technologies.

**SitaWare Frontline** is designed for frontline commanders in tough environments, where a clear operational view with rapid updates of friendly force tracking (FFT) is absolutely essential, and has been built with deployment and management in mind.

**IRIS Forms** simplifies and structures the inputting and transfer of important military information, orders and reports, using simple-to-deploy interoperability standards.

**IRIS Organisational Messaging** provides a complete military message handling infrastructure, based on the well-known Microsoft Outlook® and Microsoft Exchange®, augmented with full support for military operating procedures.

**IRIS Information Mapping** is a specialist development tool which makes it easy for systems integrators to implement many different NATO and US data exchange standards within national command and control systems.

## SYSTEMATIC SITAWARE

**Denmark**  
Tel +45 8943 2000

**United Kingdom**  
Tel +44 1276 675533  
Tel +44 1529 303322

## SYSTEMATIC IRIS

**United States of America**  
Tel +1 703 385 7522  
Free phone +1 888 665 IRIS

**Finland**  
Tel +358 207 463 870

# SYSTEMATIC SITAWARE



**Coalition Command**  
Active situational awareness for strategic command levels

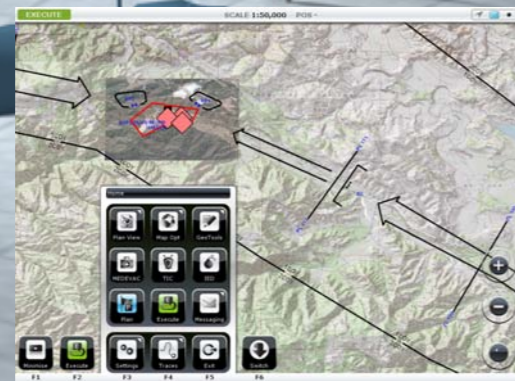
## SitaWare – information where your forces need it.

Effective action depends on the best possible situational awareness. SitaWare is a Command and Control (C2) solution that offers clarity, simplicity and high-performance that addresses real world C2 challenges at the frontline.



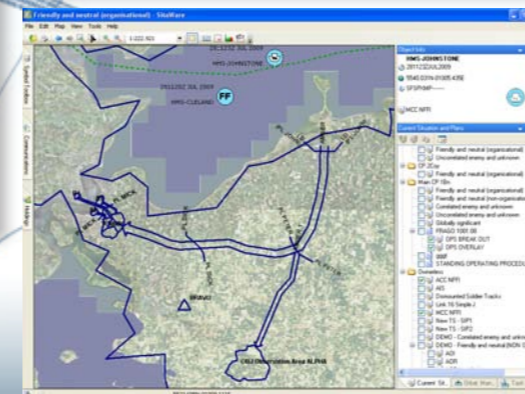
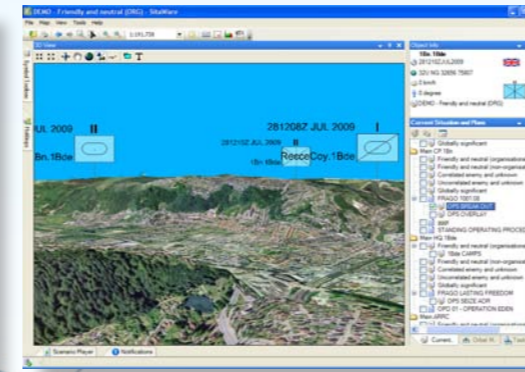
### In-Vehicle Battle Command

SitaWare Frontline is truly portable. With the application and data stored on a USB, should a frontline vehicle go unserviceable, it can simply be unplugged from the on-board computer and inserted into the computer of a different vehicle. It is not system reliant, and that leads to seamless operation as there is no need for installation. Tactical plans no longer come to halt with a loss of data and on the ground information.



### Joint Headquarters

SitaWare Headquarters not only allows for the creation and distribution of sophisticated plans and orders, but it also monitors the evolving situation and provides vital feedback to commanders on the operational and logistic situation confronting ground troops. Information is power and accurate trusted and timely information not only gains tactical advantage, but supports Force Protection. By utilising tried and tested software tools from the SitaWare Suite, the Headquarters is able to gain a comprehensive overview of unfolding events, not only at a strategic, but at operational and tactical levels too. SitaWare Headquarters is complemented by SitaWare Headquarters WebCOP which provides instant access to shared operational overviews.

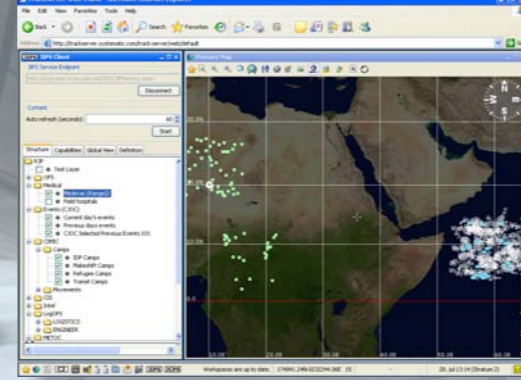
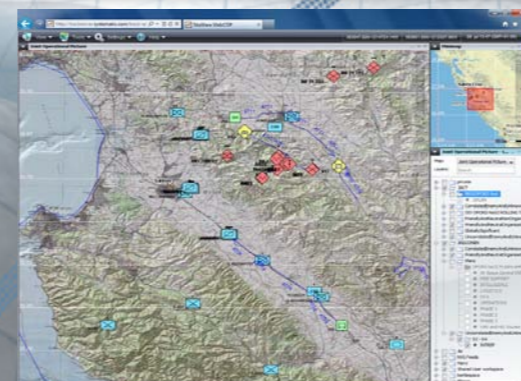
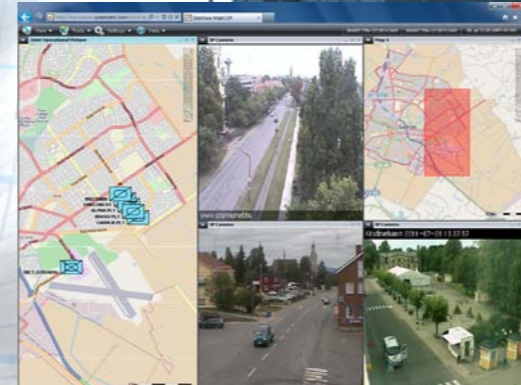


### Coalition Command

SitaWare Headquarters WebCOP creates a unique tool when integrated with SitaWare Headquarters. By supporting contemporary military and civilian data feeds through all standard browsers, including Explorer, Firefox and Safari, the command situation simply becomes available to all authorised users in near real-time, along with plans and orders.

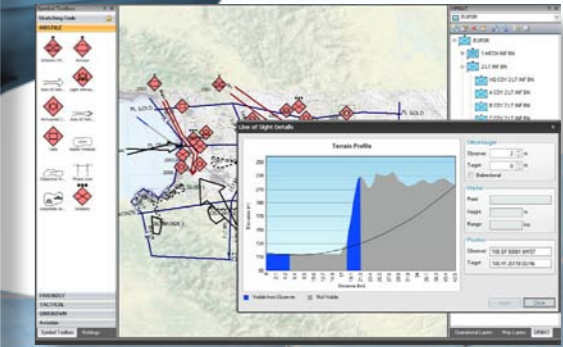
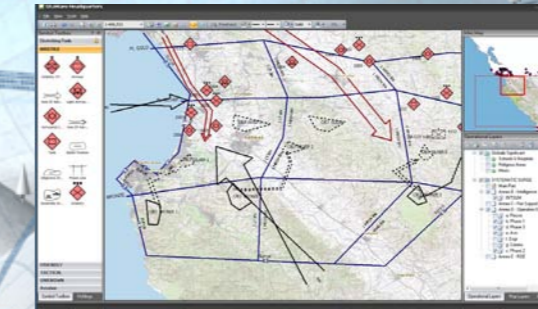
By simplifying complex pictures (taking large amounts of data from open standards) using MIP, there is an increased performance in information management. This delivers a unique flexible tool for large scale operations. SitaWare Headquarters WebCOP is tightly integrated with SitaWare Headquarters to provide planning staffs with a complete operational C2 environment which include collaborative planning and work-flow management features supporting complex plans and overlays to be created and distributed in near real-time. Both SitaWare Headquarters WebCOP and SitaWare Headquarters are able to capture live action and replay operational events for after action review and training.

Operational pictures are available in a variety of formats including 3D and the suite provides extensive support for logistic reporting of unit equipment and consumables.



### Tactical Operations Centre

SitaWare Headquarters enables Command staff, based at different locations, to participate in collaborative planning and the evolution of tactics and orders. Updates and decisions can be continuously distributed near real-time. The full overview of theatre operations, showing force activities as well as the resources available becomes much clearer. Staff can thus tailor their Common Operational Picture (COP) according to their needs within various areas of operational interest in both 2 or 3D. The system also allows for logistical reporting such as use of unit consumables and equipment which all contribute to unit capabilities. Also SitaWare Headquarters holds a situation record and playback capability for debriefing and after action reviews.



### Dismounted Commander

SitaWare Frontline keeps commanders connected to information from the command network, even when they are out in the field using hand held devices, providing them with the best possible situational awareness. This versatile tool employs the same capabilities and user interfaces as used in-vehicle and gives dismounted commanders quick access to high-detail maps and satellite imagery of the area they are operating in, highlighting friendly and hostile units.

