

# SitaWare Headquarters

## Full situational awareness and decision support

- Provides a comprehensive view of the Common Operational Picture for any theatre of operations
- Supports the entire mission – from planning and execution through to after action review
- Easy to procure, ready-made package that is rapidly deployable
- Helps to reduce information overload by enabling users to group relevant details for specific branches
- Enhances proactive decision making by providing access to shared data for planning, tasking, logistics and status management

Effective sharing of battlespace information is essential, regardless of its origin and regardless of the equipment used. This too is where cumbersome bespoke systems have struggled.

Interoperability and speed of deployment have become significant concerns when procuring new C2 systems.

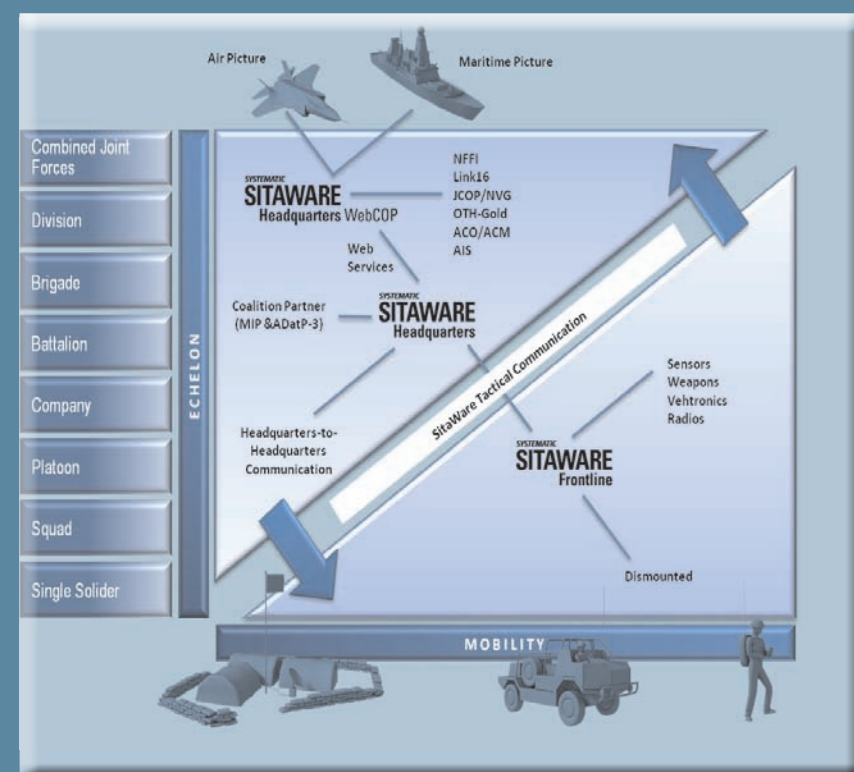
### Fresh thinking, future flexibility

SitaWare Headquarters revolutionises C2 information systems by providing a rapidly deployable, off-the-shelf solution which allows integration of multiple systems and legacy applications into a single, unified operational overview. It supports headquarters staff in planning and executing operations with a comprehensive set of tools for command and control, operational planning and situational awareness, and fulfils all core requirements straight out-of-the-box.



Complex operational environments require decisions to be made fast and accurately. After all, lives could be at stake. With so much information available, it is important that operational headquarters staff have a full appreciation of what's happening in theatre, without being overloaded with irrelevant information.

Command and Control (C2) software has certainly helped modern day operators to make critical decisions but, unfortunately, traditionally slow development projects has often meant that bespoke systems are outdated soon after they are put into service. In modern-day military operations, it has become increasingly common for different nations to work together as coalition partners.



The diagram above illustrates the Systematic suite of products and how they interact within the Command and Control structure.

# Managing the Command Flow with SitaWare and IRIS

**The SitaWare Suite is a fully scalable Command & Control (C2) solution that fulfils core requirements straight out-of-the-box. When allied with the IRIS suite of messaging software it offers formidable interoperability at all levels of command and with coalition partners. SitaWare and IRIS are available off-the-shelf, fully scalable, easy to procure and rapidly deployable.**

**SitaWare Headquarters** supports headquarters staff in planning and executing operations with a comprehensive set of tools for C2, operational planning and situational awareness - fulfilling all core requirements straight out-of-the-box.

**SitaWare Headquarters WebCOP** provides joint staffs and taskforce commanders with a detailed joint Common Operational Picture (COP) of large-scale operations using high performance web technologies.

**SitaWare Frontline** is designed for frontline commanders in tough environments, where a clear operational view with rapid updates of friendly force tracking (FFT) is absolutely essential, and has been built with deployment and management in mind.

**IRIS Forms** simplifies and structures the inputting and transfer of important military information, orders and reports, using simple-to-deploy interoperability standards.

**IRIS Organisational Messaging** provides a complete military message handling infrastructure, based on the well-known Microsoft Outlook® and Microsoft Exchange®, augmented with full support for military operating procedures.

**IRIS Information Mapping** is a specialist development tool which makes it easy for systems integrators to implement many different NATO and US data exchange standards within national command and control systems.

## SYSTEMATIC SITAWARE

Denmark  
Tel +45 8943 2000

United Kingdom  
Tel +44 1276 675533  
Tel +44 1529 303322

## SYSTEMATIC IRIS

United States of America  
Tel +1 703 385 7522  
Free phone +1 888 665 IRIS

Finland  
Tel +358 207 463 870

# SYSTEMATIC SITAWARE



Joint Headquarters  
Scalable command and control for extensive interoperability

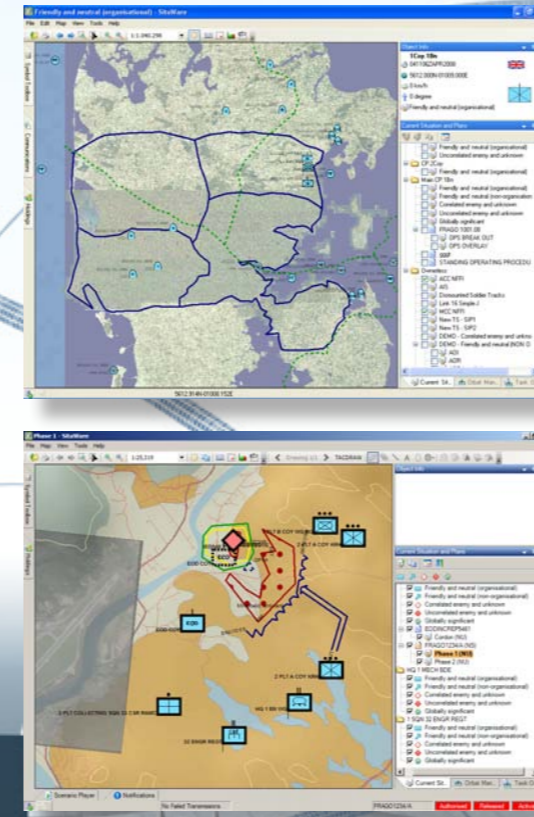
# SitaWare – information where your forces need it.

Effective action depends on the best possible situational awareness. SitaWare is a Command and Control (C2) solution that offers clarity, simplicity and high-performance that addresses real world C2 challenges at the frontline.

## Joint Headquarters

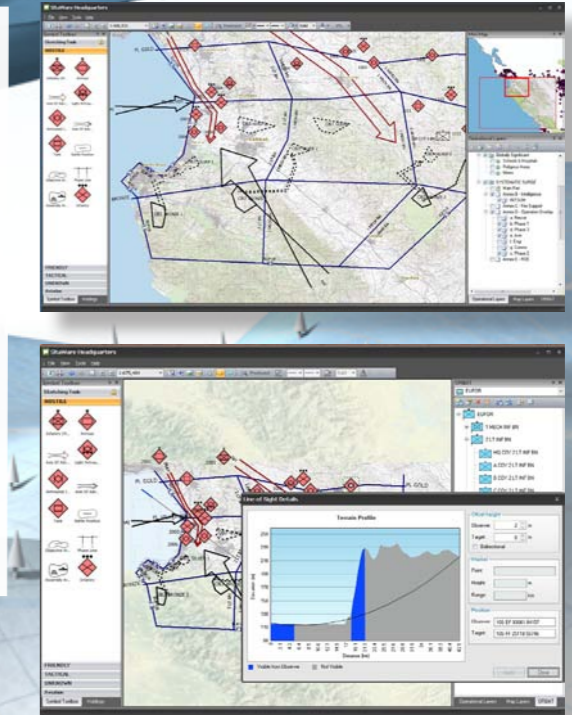
SitaWare Headquarters not only allows for the creation and distribution of sophisticated plans and orders, but it also monitors the evolving situation and provides vital feedback to commanders on the operational and logistic situation confronting ground troops. Information is power and accurate trusted and timely information not only gains tactical advantage, but supports Force Protection. By utilising tried and tested software tools from the SitaWare Suite, the Headquarters is able to gain a comprehensive overview of unfolding events, not only at a strategic, but at operational and tactical levels too.

Commanders require a reliable information resource for effective strategic decision making in combined and joint operations. The ability to coordinate decisions, inputs and large amounts of data from a wide range of sources including other C2 systems and military messaging requires a powerful, scalable set of applications.



## Tactical Operations Centre

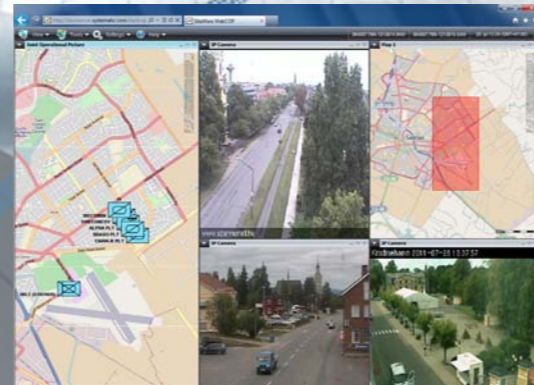
SitaWare Headquarters enables Command staff, based at different locations, to participate in collaborative planning and the evolution of tactics and orders. Updates and decisions can be continuously distributed near real-time. The full overview of theatre operations, showing force activities as well as the resources available becomes much clearer. Staff can thus tailor their Common Operational Picture (COP) according to their needs within various areas of operational interest in both 2 or 3D. The system also allows for logistical reporting such as use of unit consumables and equipment which all contribute to unit capabilities. Also SitaWare Headquarters holds a situation record and playback capability for debriefing and after action reviews.



## In-Vehicle Battle Command

SitaWare Frontline is truly portable. With the application and data stored on a USB, should a frontline vehicle become unserviceable, it can simply be unplugged from the on-board computer and inserted into the computer of a different vehicle. It is not system reliant, and that leads to seamless operation as there is no need for installation. Tactical plans no longer come to halt with a loss of data and on the ground information.

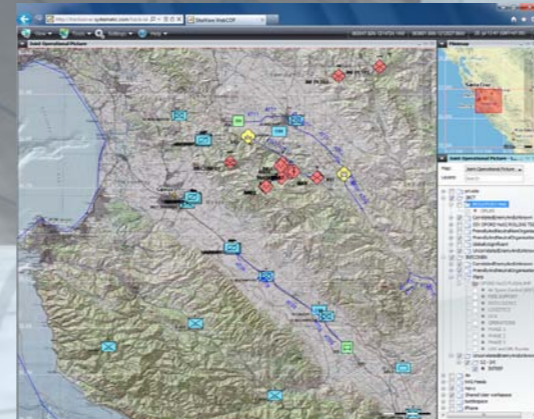
SitaWare Frontline has been optimised for use with tactical radios. Using radio based comms with situational awareness tools and interoperability with other products from the SitaWare Suite delivers formidable information up the chain of command.



## Coalition Command

SitaWare Headquarters WebCOP provides instant access to shared operational overviews. And with situational awareness provided by SitaWare Headquarters, command staff have a powerful near real-time information tool.

By simplifying complex pictures (taking large amounts of data from open standards) using MIP, there is an increased performance in information management. This delivers a unique flexible tool for large scale operations. SitaWare Headquarters WebCOP is tightly integrated with SitaWare Headquarters to provide planning staffs with a complete operational C2 environment which include collaborative planning and work-flow management features supporting complex plans and overlays to be created and distributed in near real-time. Both SitaWare Headquarters WebCOP and SitaWare Headquarters are able to capture live action and replay operational events for after action review and training.



## Dismounted Commander

SitaWare Frontline keeps commanders connected to information from the command network, even when they are out in the field using hand held devices. This versatile tool employs the same capabilities and user interfaces as used in-vehicle and gives dismounted commanders quick access to high-detail maps and satellite imagery of the area they are operating in, highlighting friendly and hostile units.

