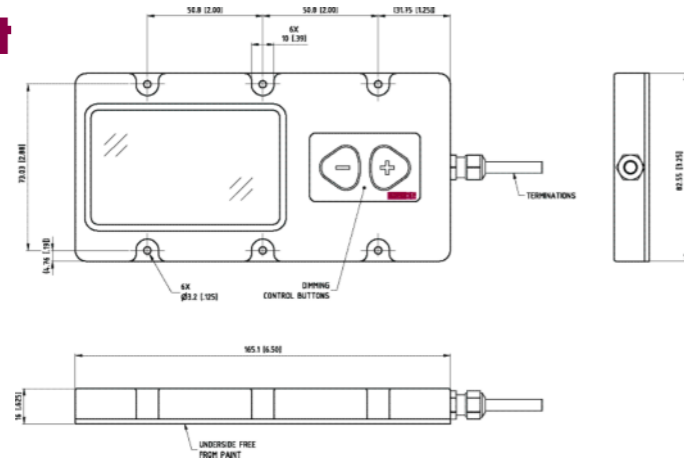


dc combi light

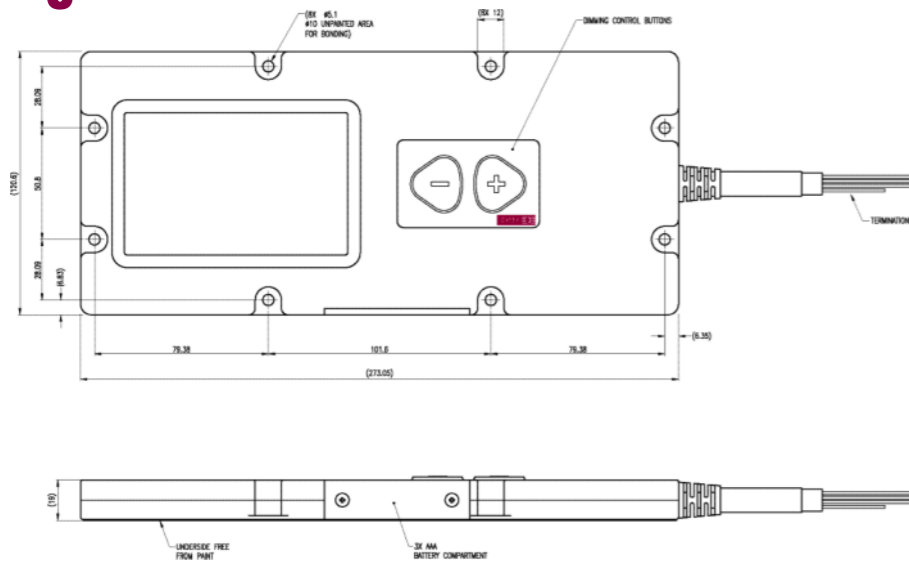


| Part number | colour | output lumens (typ) | dimensions | features | blackout mode* | input volts dc |
|-----------------|--------|---------------------|---------------|----------|----------------|----------------|
| OXLEDCP40357-WR | White | 1400 | 165 x 73 x 16 | dimnable | red | 12 - 32 |
| OXLEDCP40357-WG | White | 1400 | 165 x 73 x 16 | dimnable | green | 12 - 32 |
| OXLEDCP40357-WB | White | 1400 | 165 x 73 x 16 | dimnable | blue | 12 - 32 |

Minimum dim level will be approximately 5% of full brightness (70 lumens)

* non dimmable

ac combi light



| Part number | colour | output lumens (typ) | dimensions | features | blackout mode* | input volts dc |
|-----------------|--------|---------------------|----------------|----------|----------------|----------------|
| OXLEDCP38866/02 | White | 1400 | 273 x 120 x 19 | dimnable | red | 110 - 230 |
| OXLEDCP38866/01 | White | 1400 | 273 x 120 x 19 | dimnable | green | 110 - 230 |
| OXLEDCP38866 | White | 1400 | 273 x 120 x 19 | dimnable | blue | 110 - 230 |

Minimum dim level will be approximately 5% of full brightness (70 lumens)

* non dimmable



shelter lighting

LED lighting for soft and hard walled structures



Oxley Developments Company Ltd

Priory Park Ulverston Cumbria LA12 9QG United Kingdom
t: +44 (0) 1229 483226 f: +44 (0) 1229 581851 e: sales@oxleygroup.com

Oxley Inc

31 Business Park Drive Branford CT 06405 USA
t: +1 (203) 488 1033 f: +1 (203) 481 6971 e: info@oxleygroup.com

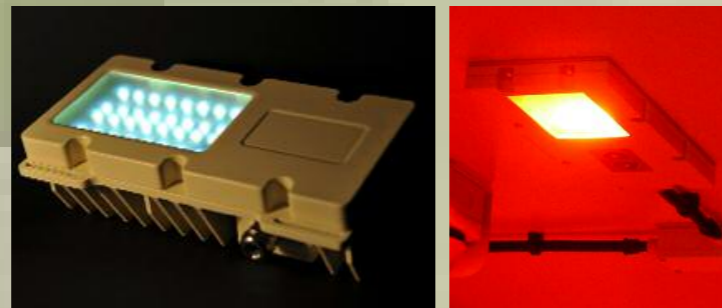
Company Approvals: BS EN 9100: 2003 ISO 9001:2000 both on Certificate No. FM 01759 • ISO 14001:2004 Certificate No: EMS 60559

Oxley is a pioneer in the field of LED lighting. We produce a range of high specification products for tents and hard-walled shelters such as ground stations, communications centres, storage containers and military field hospitals.

Established since 1942, we have designed and manufactured LED based products for over four decades. We are globally renowned for our innovative solutions for land, aircraft and naval platforms.

applications

- Tents and Shelters
- Military field hospitals
- Tactical communications centres
- Ground stations
- Command posts
- UAV control stations
- Field storage containers



Clockwise from top: combi light white variant, red blackout mode and fitted with heat sink for tent applications

Robust and reliable, Oxley lights are 'fit and forget' solutions designed for new build or to replace existing incandescent and fluorescent lighting in retrofit projects.

Our LED lights are used in a range of soft and hard walled shelter applications. Our customers have been overwhelmed by the superior performance of our LEDs in comparison to traditional light fixtures.



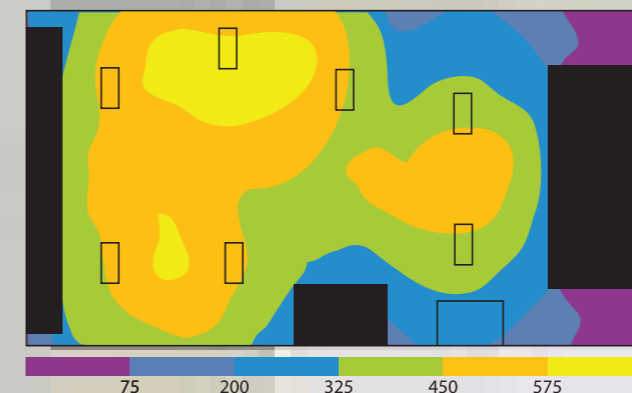
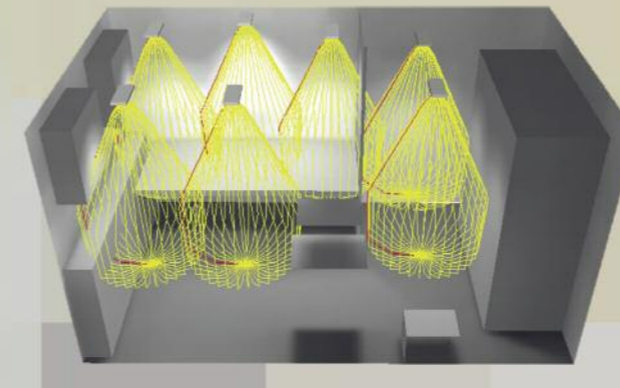
Oxley lights are installed in this Norwegian field hospital supplied by Marshall LS

LED Combi Light Features and Benefits

| Feature | Advantage | Benefit |
|-------------------------------------|---|---|
| low profile | reduced space envelope | increased work space |
| multi-input voltage | no need for external power one unit fits multiple voltages | simple to fit and connect reduced installation time, reduced stock |
| solid state design - LED technology | resistant to extreme shock and vibration fit and forget | can be deployed without fear of failure no through-life support |
| lightweight | ease of assembly | reduced fuel cost in transportation |
| EMC compliant | fully approved to EMC Def-stan 59-411 | full protection to all other electronic equipment |
| internal battery back up | light on when power is out | full productivity when power down, safe egress |
| military blackout mode | reduced light signature | safety of personnel and equipment |
| programmable dimmer | user friendly lighting options | ensures suitability for all work stations |
| high mean time between failure | reduced through life cost | reduced inventory, high reliability |
| intelligent microprocessor | assesses its environment and compensates | increased operational life |
| sealed up to IP67 | no internal ingress | allows use and storage in extreme conditions |
| efficient optical design | maximum performance from smallest unit | less units required to light space |

the right light output

Utilising our knowledge and experience we can ensure that the required light levels are achieved from the appropriate number of LEDs. We use DIALux software to simulate typical light levels in a shelter which calculates the number of Oxley lights required and their best positions to get the maximum benefit.



This example demonstrates illumination in all areas and a high light output at the desk area

key features

- Oxley combi lights provide up to three light functions in one housing - main, blackout and emergency
- In blackout mode the main white light is instantly replaced by a low level lighting in a choice of red, green or blue
- These lights are Oxley NVG Friendly.™ The light output will not adversely affect the performance of night vision goggles
- Withstands shock, vibration and extreme temperatures
- We can control the colour temperature of the LEDs to deliver either warm white (high CRI) or cold white, depending on the customer preference or requirements
- Fully RoSH compliant solutions are available
- DEFSTAN 59-411 compliant, these lights offer high levels of EMC protection for land-based applications Class A and B
- CE marked

- Paint finishes
 - white
 - black
 - eggshell

