

# ***MEDIUM WHEELED VEHICLE PRODUCTS***



**PEARSON  
ENGINEERING**



# INTRODUCTION

Pearson Engineering is a privately owned UK company that develops Combat Engineer systems and equipment to meet the needs of the world's Armed Forces. Our particular expertise is in the supply of specialised Counter-Mine, Counter-IED, Route Proofing and Clearance, Combat Earthmoving and Assault Bridging Equipment for Armoured Fighting Vehicles. Pearson Engineering are world experts in designing and manufacturing high quality products and integrated solutions, to enhance mobility and protection of those in harm's way.

## ASSURED MOBILITY

In the challenging, complex and uncertain land environment, Commanders need more than ever the ability to freely manoeuvre to places at times of their choosing. Our range of vehicle attachments, each optimised for a particular combat engineering role, can be interchanged and configured to deliver Assured Mobility support to combat operations.

## GLOBAL CAPABILITY

Our core company values are built around a desire to serve the needs of customers and to provide solutions to their particular requirements. The company supplies equipment and services to many countries throughout the world delivering Global Capability when and where it's needed, on time, every time.

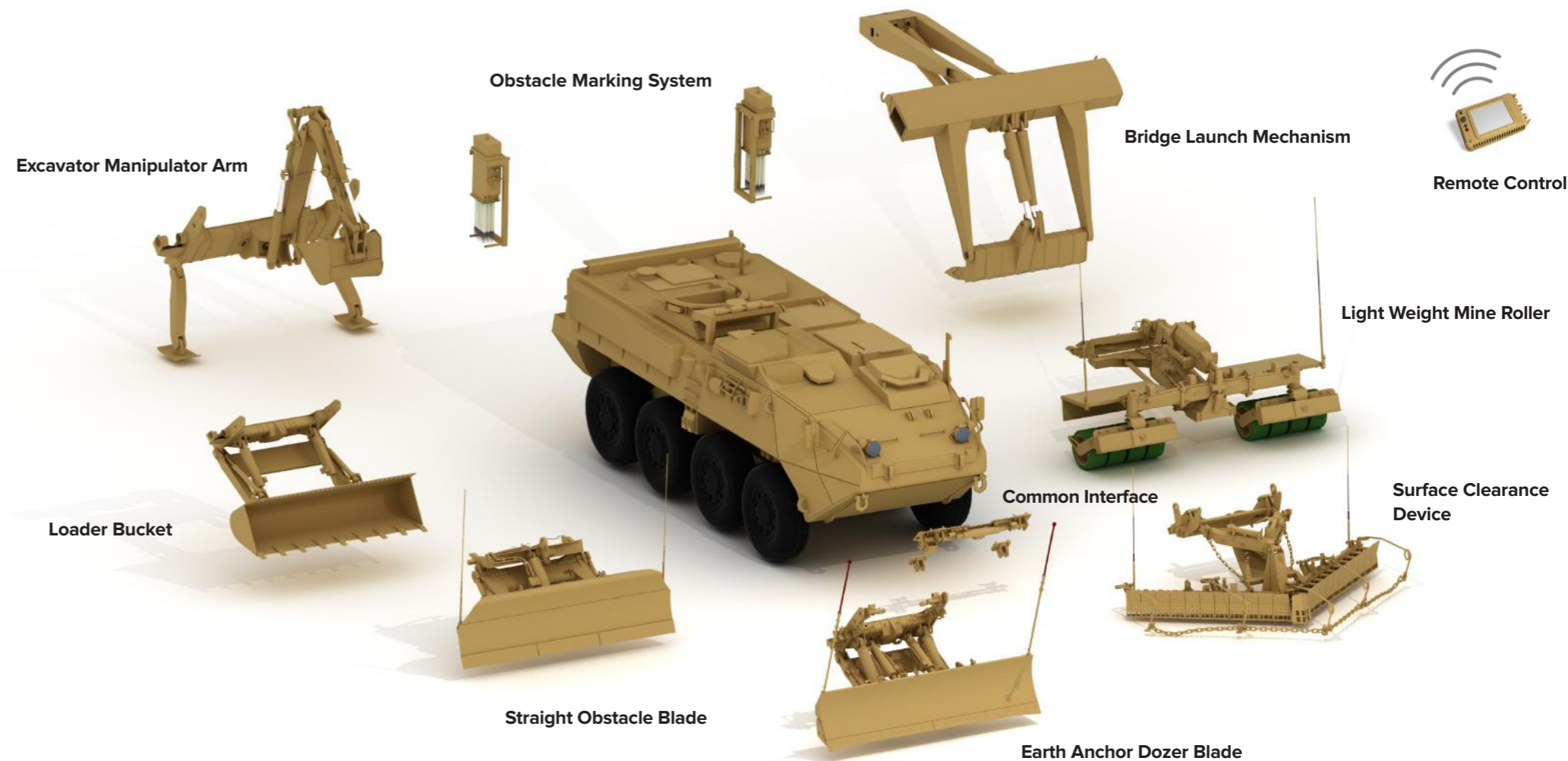
# CONTENTS

INTRODUCTION	2
PRODUCTS FOR MEDIUM WHEELED ENGINEER VEHICLES	4
LIGHT WEIGHT MINE ROLLER	6
SURFACE CLEARANCE DEVICE	8
OBSTACLE MARKING SYSTEM	10
STRAIGHT OBSTACLE BLADE	12
EARTH ANCHOR DOZER BLADE	14
EXCAVATOR MANIPULATOR ARM	18
LOADER BUCKET ATTACHMENT	20
BRIDGE LAUNCH MECHANISM	22
MAGNETIC SIGNATURE DUPLICATOR	24
REMOTE CONTROL SYSTEM	26
SPARES AND THROUGH-LIFE SUPPORT	28
FACILITIES	30

## ***PRODUCTS FOR MEDIUM WHEELED ENGINEER VEHICLES***

All of Pearson Engineering's front end equipment is designed to be fitted either directly to the host vehicle or via a common interface system which allows for their quick and easy attach and release.

The common interface is suitable for all of our front end equipment and offers the commander the flexibility to adapt to his mission. They can task organise equipment to the mission requirement and choose the best tool for the job. This approach leads to higher levels of mission success by increasing force capability and availability without increasing force structure and manpower.



# ***LIGHT WEIGHT MINE ROLLER***



Lightweight but heavy effect



Roller wheels follow ground contours providing constant ground contact



Minimal effect on vehicle mobility



Roller wheels can be fully raised into a transport position when not in use



Rapidly repairable



Solid tyres resist punctures and damage



Common interface compatible

**The Light Weight Mine Roller (LWMR)** protects vehicles from buried mines and pressure initiated explosive devices using roller gangs, which follow the ground over undulating terrain, to apply pressure to the ground ahead of the host vehicle to detonate a threat before the vehicle and its crew reaches them. The LWMR gives track width protection.

The system is generally used where there is a possibility, rather than the probability of the presence of threats on an intended route.

The LWMR comprises two 4-wheel roller gangs to protect the vehicle tracks. The wheel tyres are puncture proof and are made from a special wear resistant, semi-compliant polyurethane compound.



## ***SURFACE CLEARANCE DEVICE***



Clears surface laid mines and ordnance from the full width of the vehicle



Vee-blade optimised for clearing routes



Angle-blade optimised for clearing areas



Proven to operate on a wide range of terrains



Low maintenance with replaceable blade segments



Optimised for the host vehicle



Common interface compatible

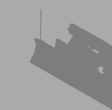
**The Surface Clearance Device (SCD)** clears surface laid mines and threats found within the path of the full width of the vehicle from roads, tracks and rough terrain to produce a cleared route for follow-on vehicles.

Independent segments of a full width blade follow the ground contours to move threats wide and clear of the vehicle.

There are two versions of the SCD; a Vee-blade optimised for clearing routes and a straight Angle-blade which is optimised for clearing areas.

The robust system comprises easily and rapidly replaceable blade segments to ensure operability, even after a blast.

# OBSTACLE MARKING SYSTEM



Provides vehicles with the capability to clearly mark out safe lanes and routes or hazardous areas



Low weight system



Deployment mechanisms available to suit a wide variety of combat vehicles



Various marker poles are available including reflective, fluorescent, day-glow and LED-enhanced



Capable of manual, distance or time-based firing



Proven and in service with numerous Armed Forces

**The Obstacle Marking System (OMS)** is a vehicle mounted electro-pneumatic payload dispensing system most commonly used for marking the boundaries of routes and areas. Designed to fire marker poles into the ground at controlled intervals, the OMS gives a host vehicle the capability to clearly mark out hazardous areas such as the edges of a minefield breached lane.

An OMS comprises dispenser units mounted either side of the vehicle, compressor units mounted onto the vehicle, an OMS Control Unit (OMSCU) and a set of marker poles.

The dispenser unit enables marker poles to be fired pneumatically, either manually or automatically, into a variety of surfaces from sand and soil to asphalt and concrete at either timed or distance based intervals.

# ***STRAIGHT OBSTACLE BLADE***



Compact design with a centre of gravity near the vehicle to ensure minimum effect on mobility



Damping cylinders protect the attachment and vehicle against excessive impact loads



Suitable for clearing rubble and other obstacles



Creates a clear route for following operations



Battle proven and capable of withstanding high loads generated



Common interface compatible

**The Straight Obstacle Blade (SOB)** is a lightweight Combat Dozer Blade which is strong and robust and enables vehicles to rapidly clear rubble and other obstacles and create a clear route for following operations.

The SOB is compact and is designed to retain the gravity close to the vehicle structure. Made of high tensile, low carbon steel, the SOB is capable of withstanding the loads generated during light dozing tasks. An extension fitted to the top of the blade prevents soil from spilling over and accumulating on the vehicle.



## ***EARTH ANCHOR DOZER BLADE***



Combined capability of earth anchoring and dozing



Suitable for earth anchoring (recovery)  
winch operations



Suitable for clearing rubble and obstacles



Compact design to minimise effect on mobility



Common interface compatible

**The Earth Anchor Dozer Blade (EADB)** provides a combined capability blade enabling earth anchoring, during recovery operations, and dozing tasks to be undertaken.

The blade is optimised as an earth anchor or dozer blade by adjusting the blade via the pitch cylinders. The blade can anchor the vehicle in a wide range of ground conditions, providing a stable platform for winching (recovery) operations. As a dozer, it can be used to rapidly clear rubble and undertake light dozing tasks.

Made of high tensile low carbon steel, the EADB is lightweight and strong enough to resist the high loads generated during operation. The compact system is designed to retain the centre of gravity close to the vehicle structure.



# EXCAVATOR MANIPULATOR ARM



Excavates and fills trenches, craters or ditches



Demolishes structures



Clears other obstacles from routes



Suitable for lifting and loading tasks



Robust and strong



Common interface compatible

**The Excavator Manipulator Arm (EMA)** enables vehicles to dig, demolish, remove obstacles and fill trenches to create a clear route for following operations. The system comprises a boom, arm, bucket and stabilising arms.

Made of high tensile low carbon steel which makes the product robust and strong yet low weight. The system can also be used for obstacle reduction tasks. During transport, the EMA stows tightly against the hull of the host vehicle and the telescopic stabilising arms are retracted to protect the equipment and to ensure that the centre of gravity is retained close to the vehicle structure.

# LOADER BUCKET



3 modes: Carry, Dig, and “Float” levelling



Upgrade to 4-in-1 enables Grade and Grab capability



Includes penetrating bucket teeth to assist earthmoving activities



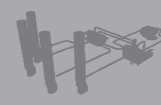
Common interface compatible

**The Loader Bucket Attachment (LBA)** provides a powerful digging and carrying capability, enabling armoured vehicles to transport material, clear obstacles, dig and fill trenches and assist in reconstruction tasks.

Manufactured from structural and wear resistant steel, the LBA is multi-purpose, suitable for a variety of applications. In basic form it is used as a carrying bucket and digger to provide earthmoving and obstacle reduction capabilities. It can be further upgraded to a 4-in-1 bucket, enabling grading and clamp (grab) capability.

The LBA can be operated in a float mode to assist levelling operations. Adjustable pitch enables the bucket to articulate from an optimal earth cutting angle to a material dump position.

# BRIDGE LAUNCH MECHANISM



Rapid bridge launch and recovery



Stows compactly when not in use



Lightweight



Low centre of gravity to minimise impact on mobility



Foot remains in firm contact with the ground at all times



Common interface compatible

**The Bridge Launch Mechanism (BLM)** enables a combat vehicle to launch and recover assault bridging in less than two minutes from under armour without permanently changing the role of the host vehicle.

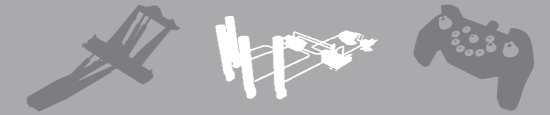
The BLM is fitted to the front of the vehicle and allows the bridge to be stowed, launched and recovered using a single system. The system is lightweight and is specifically designed to minimise the impact on vehicle mobility by keeping the bridge and bridge launch mechanism low and close to the vehicle hull when in the transport configuration.

Upon launch and recover, the foot of the BLM remains in firm contact with the ground, reducing the load transfer onto the host vehicle and ensuring a stable launch platform.



Partnered Product

# MAGNETIC SIGNATURE DUPLICATOR



Provides stand-off detonation of magnetic influence mines at a safe distance



Product can be integrated onto any of Pearson Engineering's counter-mine systems



Enhances operational capability



Improves survivability



Provides advanced protection to operations



Proven and in service with numerous Armed Forces

**The Magnetic Signature Duplicator (MSD)** increases the effectiveness and survivability of counter-mine equipment by causing the stand-off detonation of magnetic influence mines at a safe distance ahead of the host vehicle.

The MSD generates a multi-axial magnetic signature optimised for magnetic influence fused mines.

The system comprises four emitter coils, two associated power boxes and a MSD Control Unit (MSDCU).



Partnered Product

## REMOTE CONTROL SYSTEM



RCS OPERATOR CONTROL UNIT



- ⚙ Proven and in service with numerous Armed Forces
- ⚙ Safety mechanisms are considered within every design aspect, ensuring safe operation
- ⚙ Easy to use, based on commonly available remote control hardware
- ⚙ Secure encrypted digital radio link technology
- ⚙ Reduces the risk to human life during Counter-IED and Counter-Mine operations
- ⚙ MANET technology enables multiple RCS's to operate under one frequency, boosting performance in NLOS (near-line-of-sight) environment

**The Remote Control System (RCS)** is a proven, safe and reliable means of operating unmanned military vehicles either from a remote command vehicle or personnel portable system. Originally developed for use by the British and US Army, the RCS employs secure digital radio link technology with encryption. The radio link is optimized to achieve maximum range and throughput.

RCS operates on the master-slave principle, with the unmanned 'slave' vehicle controlled from up to two (2) Operator Control Units (OCU).

Multiple cameras provide all round vision with high definition video and performance data being relayed to the operator via a high resolution, low glare, display screen.



## ***SPARES AND THROUGH-LIFE SUPPORT***

**Pearson Engineering is committed to ensuring that customers are fully supported with spares packages, training and through-life support for their equipment.**

A dedicated team of through-life support specialists ensure that customers have everything they need at their disposal to effectively use the equipment and to fully maintain its operational capability.

### ***FIELD SUPPORT***

Field Support Representatives provide 24/7 on call assistance, in field repair support, trials support, equipment installation support and new equipment training solutions.

### ***INTEGRATED LOGISTICS SUPPORT***

Pearson Engineering offers its customers a comprehensive range of ILS services that encompass the DEF STAN 00-60 methodology.

### ***REPAIR AND OVERHAUL***

Pearson Engineering has the facilities and key skills required to provide a comprehensive equipment conversion, repair and overhaul service.

### ***DESIGN AND TEST***

Pearson Engineering has a dedicated design office, prototype development and test facility and access to test and trial sites throughout the UK and U.S.



## ***FACILITIES***

### **Pearson Engineering facilities include the Armstrong Works in Newcastle upon Tyne, UK.**

These unrivalled facilities provides an immediate on-site dedicated machining, fabrication and assembly capability for the rapid prototyping and production of defence materiel.

### ***VEHICLE BUILD***

Pearson Engineering offers sub-contract full vehicle assembly, integration & test services for tracked, wheeled, light, medium and heavy armoured vehicles, based at the site of manufacture for the current British Army heavy armoured fleet. Ready now for sub-contract armoured vehicle assembly.

### ***DEFENSIVE STRUCTURES***

Our fully equipped facility provides customers with a single location for fabrication, welding, machining and finishing of armoured hulls, turrets and structure. Unique armour manufacturing capability in the UK.

### ***PROGRAMME MANAGEMENT***

With over 30 years of experience in delivering Combat Engineering systems to countries worldwide, Pearson Engineering understands defence programmes and contracting with both end-users and prime contractors. Complex project management capability with small company agility.

### ***SUPPORT & MRO SERVICES***

Proven complex defence services including repair and integration, modification, inspection and upgrade. End-to-end defence manufacturing services for armoured fleets.

## ***CONTACT US***

T: +44 (0) 191 234 0001

E. [pearson@pearson-eng.com](mailto:pearson@pearson-eng.com)

Pearson Engineering Limited  
Armstrong Works  
Scotswood Road  
Newcastle Upon Tyne  
NE15 6UX  
UK

**[www.pearson-eng.com](http://www.pearson-eng.com)**