

SENSITRON SEMICONDUCTOR



Products and Solutions

JAN QPL & Equivalent Diodes.....	2
Die Products.....	3
Motor Controllers.....	4-5
Solid State Power	6-7
Slash Sheet Extension Diodes.....	8
High-Reliability Discretes.....	9
Transient Voltage Suppressors....	10
Primary Power Generation.....	11
Power Conversion/Conditioning...	12
Custom Hybrids.....	13
Tools & Analysis.....	14
Advanced Technology.....	15
Quality.....	16

Products and Solutions

Sensitron Semiconductor · 221 West Industry Court · Deer Park, NY 11729-4681 ·
Phone (631) 586 7600 · Fax (631) 242 9798 · www.sensitron.com · sales@sensitron.com

JAN QPL & Equivalent Diodes

Features/Benefits

- ✓ JAN, JANTX, JANTXV & JANS QPL certified diodes and space level equivalent diodes available
- ✓ Parts available in axial or MELF packaging
- ✓ In-house inventory- to accommodate short lead times
- ✓ Space equivalent devices are manufactured on the space qualified manufacturing line

Part Number						Axial	Melf	Slash	Description
1N3595-1						Yes	US	241	Vf Controlled Diode
1N3611	1N3612	1N3613	1N3614	1N3957		Yes	None	228	1A Std Recovery
1N4099-1	to	1N4135-1				Yes	UR-1	435	500mW Zener
1N4245	1N4246	1N4247	1N4248	1N4249		Yes	None	286	1A Std Recovery
1N4460	to	1N4496				Yes	US	406	1.5W Zener
1N4942	1N4944	1N4946	1N4947	1N4948		Yes	None	359	1A Fast Recovery
1N4954	to	1N4996				Yes	US	356	5W Zener
1N5186	1N5187	1N5188	1N5190			Yes	None	424	3A Fast Recovery
1N5415	1N5416	1N5417	1N5418	1N5419	1N5420	Yes	US	411	3A Fast Recovery
1N5550	1N5551	1N5552	1N5553	1N5554		Yes	US	420	3A Std Recovery
1N5555	to	1N5558				Yes	US	500	1500W Unidirectional TVS
1N5614	1N5616	1N5618	1N5620	1N5622		Yes	US	427	1A Std Recovery
1N5615	1N5617	1N5619	1N5621	1N5623		Yes	US	429	1A Fast Recovery
1N5629	to	1N5665A				Yes	None	500	1500W Unidirectional TVS
1N5802	1N5804	1N5806				Yes	US	477	1A Ultra Fast Rectifier
1N5807	1N5809	1N5811				Yes	US	477	3A Ultra Fast Rectifier
1N5819-1						Yes	UR-1	586	1A/45V Schottky Rectifier
1N6108	to	1N6136A				Yes	US	516	500W Bi-directional TVS
1N6137	to	1N6172A				Yes	US	516	1500W Bi-directional TVS
1N6319	to	1N6355				Yes	US	533	500mW Zener
1N6620	1N6621	1N6622	1N6623	1N6624	1N6625	Yes	US	585	1A Ultra Fast Rectifier HV
1N6626	1N6627	1N6628	1N6629	1N6630	1N6631	Yes	US	590	2A Ultra Fast Rectifier HV
1N6638	1N6642					Yes	US	578	Small Signal Switching
1N6640	1N6641					Yes	US	609	Small Signal Switching

Die Products: Rectifier, TVS, Zener, Schottky, Small Signal Switching



Standard Metalization:

Top: (Al, 25kÅ min) Bottom: (Ti/Ni/Ag, 30kÅ min)

Bottom side: cathode, Top side: anode

**** This list is for reference only. For a comprehensive list, view our catalog for download at:**

www.sensitron.com/dieproducts.htm

Sensitron can perform Lot Acceptance Testing to the process flow following these quality levels:

- ✓ MIL-PRF-38534, Class H and Class K
- ✓ MIL-PRF-19500, Class H and Class K

General Purpose, Fast, Ultrafast Rectifier Die

- Voltage: 50 to 6000V
- 1A to 70A Chip
- Trr: 25ns to 3000ns

TVS Die

- Broad voltage range available
- Broad spectrum transient suppression
- 500W, 1500W surge capability

Zener Die

- Working Voltage: 3.3V to 390V
- Power: 500mW – 5W
- 5% tolerance for Vz

Schottky Die

- Soft reverse recovery at low and high temperature
- Broad voltage range: 15V-200V
- 500W, 1500W surge capability

Small Signal Switching Die

- Voltage: 70 to 150V
- Up to .3A

Part Number						Slash	Description	Die
1N3595-1						241	Vf Controlled	✓
1N3611	1N3612	1N3613	1N3614	1N3957		228	1A Std Recovery	✓
1N4099-1	to	1N4135-1				435	500mW Zener	✓
1N4148-1						116	Small Signal Switching	✓
1N4245	1N4246	1N4247	1N4248	1N4249		286	1A Std Recovery	✓
1N4460	to	1N4496				406	1.5W Zener	✓
1N4942	1N4944	1N4946	1N4947	1N4948		359	1A Fast Recovery	✓
1N4954	to	1N4996				356	5W Zener	✓
1N5186	1N5187	1N5188	1N5190			424	3A Fast Recovery	✓
1N5415	1N5416	1N5417	1N5418	1N5419	1N5420	411	3A Fast Recovery	✓
1N5550	1N5551	1N5552	1N5553	1N5554		420	3A Std Recovery	✓
1N5614	1N5616	1N5618	1N5620	1N5622		427	1A Std Recovery	✓
1N5615	1N5617	1N5619	1N5621	1N5623		429	1A Fast Recovery	✓
1N5711-1						444	Schottky	✓
1N5802	1N5804	1N5806	1N5807	1N5809	1N5811	477	3A Ultra Fast	✓
1N5819-1						586	1A/45V Schottky	✓
1N6102	to	1N6173A				516	500W/1500W Bi-directional TVS	✓
1N6309	to	1N6355				533	500mW Zener	✓
1N6620	1N6621	1N6622	1N6623	1N6624	1N6625	585	1A Ultra Fast Rectifier HV	✓
1N6626	1N6627	1N6628	1N6629	1N6630	1N6631	590	2A Ultra Fast Rectifier HV	✓
1N6638	1N6642					578	Small Signal Switching	✓
1N6639	1N6640	1N6641				609	Small Signal Switching	✓

Fully Integrated Motor Controllers

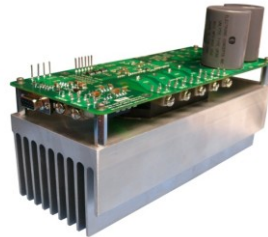


Applications

- Military Ground Vehicles
- Industrial Equipment
- Heavy Duty Vehicles
- Electrical Hybrid Vehicles
- Braking Systems
- Air Handlers
- Lifts and Pumps
- Avionics
- Downhole Drilling/Exploration

Selectable Features / Benefits

- ✓ MOSFET or IGBT output stage
- ✓ Closed-loop control of motor
- ✓ Cycle by cycle current limiting
- ✓ Internal precision current sense resistor
- ✓ Direction input for motor direction reversal
- ✓ Overvoltage / coast input for shutdown of power switches
- ✓ Enable/disable input with soft start for safe motor starting



Evaluation Boards for Fully Integrated Motor Controllers

- Up to 70A average DC bus current with up to 400VDC bus voltage, or
- Up to 40A average for 600V DC bus voltage
- Internal precision current sense resistor
- Resolver on hall position inputs
- Closed loop speed on current control

Interface boards for system evaluation available for any product!



Speed/Velocity Controllers

SMC6 Series

- Operation at DC bus from 28V to 600V
- 2 or 4- quadrant mode configuration
- Tach output with avg output proportional to speed



Sensorless Controllers

SMCS6 Series

- Operation at DC bus from 28V to 600V
- 2 quadrant mode configuration
- Speed/velocity controller w/o hall sensors



Torque Controllers

SMCT6 Series

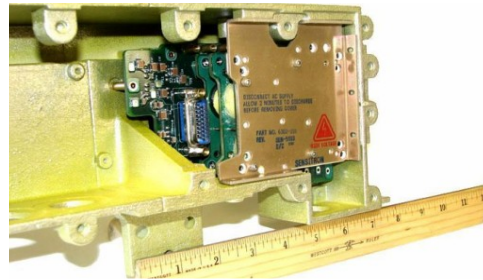
- Operation at DC bus from 28V to 1200V
- 4 quadrant mode configuration
- Direction and motor current controlled through command polarity & value

Motor Controllers, Modules & Assemblies



Field Oriented Controller

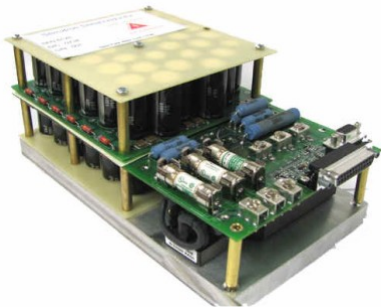
- Sinusoidal Sensorless Speed Control
- 75A Peak Phase, 800V Steady State Operation
- Torque Limiting
- IGBTs rated to 1200V



3-Phase BLDC Motor Control w/ EMI Filter

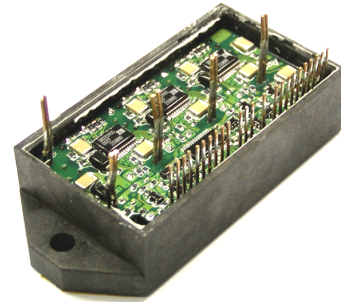
- 400HZ 3 Phase input per Mil-Std-704
- Driver Output to 10A Peak
- Hall Sensor Commutation
- 6 Pulse 3 Phase Output Drive

MIL-STD-704 and MIL-STD-461 Compliant



3 Phase 10HP BLDC Motor Drive Assembly

- AC Inputs 110V, 220V, 440V (55-400HZ)
- 3 Phase Input Fuses
- AC Rectification, AC Current Surge Limiter
- Bus Voltage TVS
- Regenerative Brake Limiter



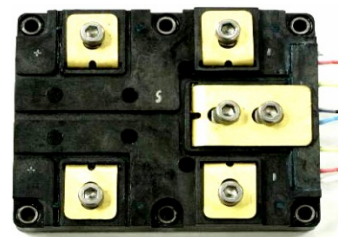
IGBT and MOSFET Bridges

- MOSFETs: 30 to 600V, Up to 100A
- IGBTs: 600 to 1200V, Up to 250A
- Available with or without:
 - opto isolation
 - drivers



Cryogenic Cooler Controller

- Input voltage 15 to 34V
- Output power up to 90W with 28V input
- Output voltage 13 to 16V rms
- Voltage programmable precision
- AC power source



IGBT Module

- Hermetic Core Construction for operation up to 800A
- Altitude Operation to 50K feet
- High Frequency Switching Operation at Temp Extremes
- Internal Layout with minimized stray inductances

Solid State Power Management



Applications/Markets:

- Military Ground Vehicles
- Unmanned Aerial Vehicles
- Marine Vessels
- Test & Industrial Equipment
- Communication & Command Centers
- Energy Exploration Equipment
- Off Highway and Heavy Duty Vehicles
- Medical Emergency Vehicles



Features/ Benefits

- ✓ False trip and EMC Reduction
- ✓ Built-in test features
- ✓ Solid State Reliability
- ✓ True I²t and Instant Trip Protection
- ✓ Software and hardware current rating programmability
- ✓ Accurate Current, Temperature and Voltage Measurements
- ✓ Isolated Discrete or serial interface controls and load monitoring
- ✓ SSPC combine protection, remote control and health monitoring functionalities

Multi-Channel SSPC Diamondback Series

- Up to 16 programmable channels
- CAN interface
- Channel paralleling up to 190A or 240A
- 5Vdc Aux Power



Multi-Channel SSPC: Cobra Series

- Up to 6 channels
- Programmable: 1A to 25A per channel
- Parallel channel capability up to 150A
- RS-232 /422 /484 or CAN serial interface bus



Multi-Channel SSPC: 32 Channel

- Up to 32 programmable channels
- Programmable: 1A to 25A per channel
- Parallel channel capability
- 5Vdc or 28Vdc Aux Power
- CAN serial interface bus



Multi-Channel SSPC: Gen II

- 1 or 2 16-Channel cards
- 1 or 2 32-Channel cards
- Circular, rugged connectors
- Design and production capability
- Price performance leader

Solid State Power Management



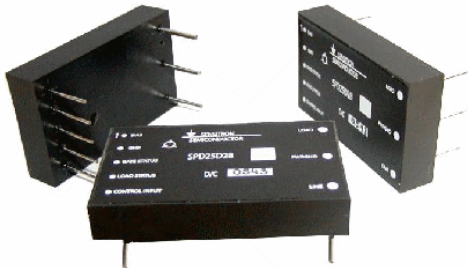
Low Current Module: **SRPC Series**

- MIL-STD 1275B, MIL-STD-704F Compliant
- 28Vdc with 35A current
- Small size and low weight
- Battle short to override trip protection



80A Module: **SRPC Series**

- 28Vdc Nominal, over 80A of current
- Extremely low power
- No derating over temperature
- Low auxiliary current for internal logic



Programmable SSPC: **SPDP**

- 28Vdc, up to 120A
- 270Vdc to 10A, 375Vdc to 50A
- No heatsinking required
- No external cooling required
- No derating over temperature!



50Vdc/ 115Vac Module: **SPD8A115**

- 115Vac, up to 12A
- True I^2t protection
- 2-pole operation with 500V isolation
- Small footprint epoxy shell construction



High Voltage/Current Solid State Relay **SSR**

- 2000V Input to Output Isolation
- 600V Blocking, 50A Continuous Current
- 400A Pulsed
- MIL-STD-704 and MIL-STD-461 Compliant



Solid State Relay/Contactors: **SCP-5285/SSR**

- 1600 Volts / 75 Amps
- Short circuit and thermal protection
- Crosses to industry standard products
- Back-to-back SCR output

Slash Sheet Extension Diodes

Sensitron offers rectifier diodes as an extension to industry standard slash sheet diodes.
**This list is a selection only. For more information, contact us at sales@sensitron.com

Package	1A	1A	3A	3A
	Axial 106	MELF-A	Axial 306	MELF-B
150V trr	1N5806 25ns	1N5806US 25ns	1N5811 30ns	1N5811US 30ns
200V trr	SRS120HE 40ns	SRS120HEU 40ns	SRS320HE 30ns	SRS320HEU 30ns
250V trr	SRS125HE 40ns	SRS125HEU 40ns	SRS325HE 30ns	SRS325HEU 30ns
200V trr	1N6620 30ns	1N6620US 30ns	1N6626 30ns	1N6626US 30ns
600V trr	1N6622 30ns	1N6622US 30ns	1N6628 30ns	1N6628US 30ns
1000V trr	1N6625 60ns	1N6625US 60ns	1N6631 60ns	1N6631US 60ns
1200V trr	SRS1120HE 60ns	SRS1120HEU 60ns	SRS3120HE 60ns	SRS3120HEU 60ns
1300V trr	SRS1130HE 80ns	SRS1130HEU 80ns	SRS3130HE 100ns	SRS3130HEU 100ns
1400V trr	SRS1140HE 80ns	SRS1140HEU 80ns	SRS3140HE 100ns	SRS3140HEU 100ns
1500V trr	SRS1150HE 80ns	SRS1150HEU 80ns	SRS3150HE 100ns	SRS3150HEU 100ns

SRS120/125/320/235
(extension of /477)
Higher Breakdown Voltage:
PIV @ 200V to 250V

SRS1120/30/40/50
(extension of /585, /590)
High Voltage Diodes
PIV @ 1200 to 1500V

Sensitron has product in key Space Programs, including the following (10-year pedigree):

Space Program Involvement

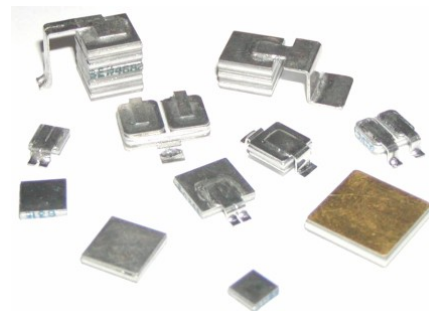
Advanced EHF	Globalstar	LISA Pathfinder	Space Tech 5
AEHF Satellite	GPS 3	Mars Orbiter & Lander	Spacebus 4000
Air Force Payloads	HAAS	NPOESS	STAR 2.7
ASIASAT	Herschel Planck	OPTUS D1, D2, D3	STAR TRACKER
ASTRO15	HNS Satellite	ORION	STEREO
Atlas V URCU & BRCU	HORIZONS	P858	SWARM
Dawn Satellite	INTELSAT	P982	Swift Satellite
Defense Systems	Int'l Space Station	SENTENIAL 1, 2 & 3	TAURUS II
Echostar & DirecTV	Iridium	SINOSAT 3 & 6	TerraSar
Satellites	ISIS	SMALL GEO	THOR6
Eurostar 3000	JWST Telescope	Space Based Radar	Titan
Galaxy 12,14 &15	Project	Space Shuttle	Viasat

Hi-Reliability/Hermetic Discretes



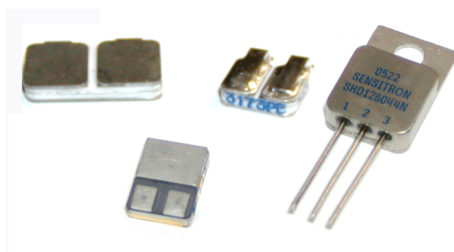
Schottky Rectifiers

- Up to 200V available
- Ultra low leakage current for 100V & 150V available
- 200 C process available



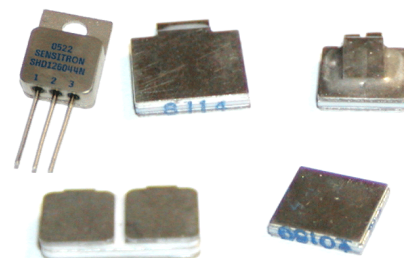
PowerPak Diopaks

- Voltage: Up to 1200V
- Current: up to 100A
- SMT versions, single & dual configurations



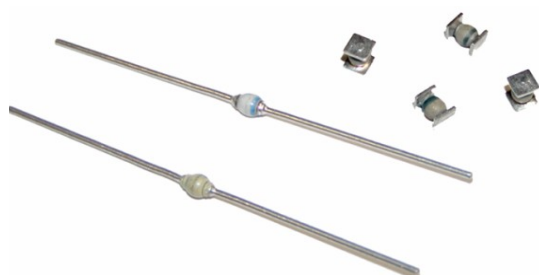
Discrete MOSFETs & IGBTs

- MOSFETs: Up to 1000V
- IGBTs: Up to 1200V
- Mil/Space level screening available



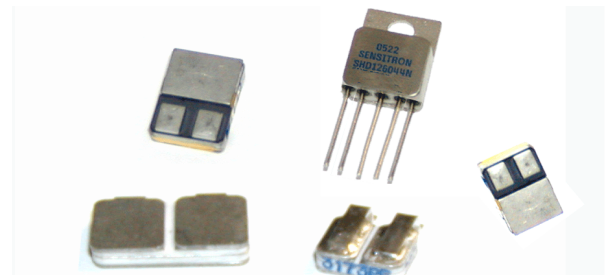
SiC Schottky Rectifiers & Bridges

- SiC Schottky Rectifiers: Up to 1200 V
- SiC Schottky Bridges: Up to 2500 V
- No recovery time or reverse recovery losses
- Mil/Space level screening available



Zeners

- Up to 200V Nominal
- Very low thermal impedance
- Voidless hermetically sealed glass package
- Mil/Space level screening available



Voltage Regulators

- Fast transient response
- Guaranteed dropout voltage at multiple currents
- Reliable construction
- High current handling capability

Transient Voltage Suppressors



Products

- Lightning Strike Protection
- EMP/NEMP Protection
- TVS Modules
- Hermetic TVS Arrays
- Load Dump Protector
- Hermetic TVS Diodes
- TVS Die
- Plastic Diodes and Arrays

Features/Benefits

- ✓ High Surge Capability
- ✓ Fast, Instantaneous Response Time
- ✓ Low Impedance
- ✓ Competitive Pricing

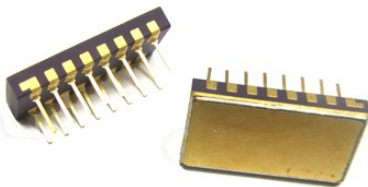


Many of Sensitron's Transient Voltage Suppressors:

- Exceed MIL-STD-1275
- Exceed MIL-STD-1399
- MIL-STD-2036
- Exceed MIL-STD704/A and DOD-STD-1399 requirements
- Meet UL-94V0 Flammability Classification

MIL-STD-1275 Tranzorb: **SCP-5282 Series**

- Clamping below 55V DC for both 100V and 250V pulse
- High pulse power capability
- Hermetic or Non-Hermetic available
- MIL-STD-1275 compliant



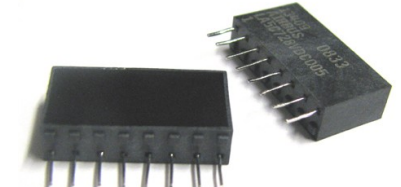
TVS Arrays, **DLZ Series**

- 300W peak pulse power (8/20 μ s)
- ESD protection > 40KV
- Uni-directional or Bi-directional
- Direct crosses to industry standard parts
- MIL-STD-461 compliant



TVS Modules

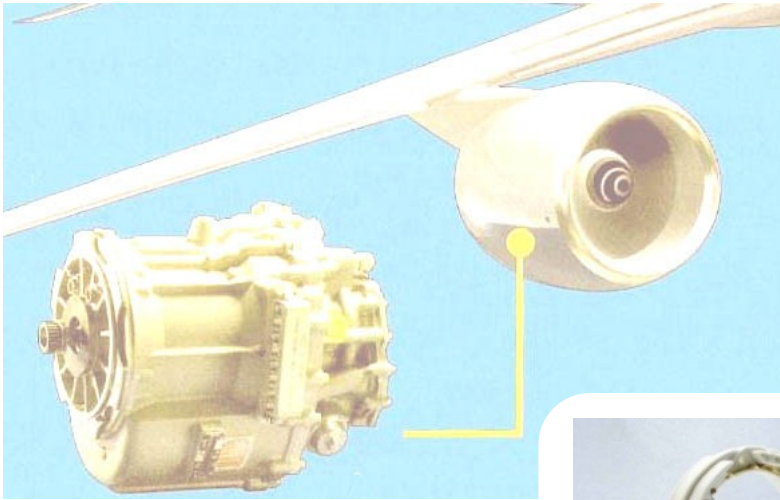
- Equivalent to Industry Standards:
PHP/PIP8.4 to PHP/PIP500
704-15K36T and 60KS200C
90KS200C/90KS200
- Uni-directional or Bi-directional



Lightning Strike Protection

- Non-hermetic single in-line package
 - Working Voltages: up to 46V
 - Clamping Voltages: up to 90V
 - Long and short wave capable
 - Qualified for several aircraft
- NEMP protection also available**

Primary Power Generation



Features/Benefits

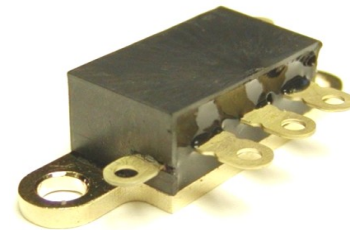
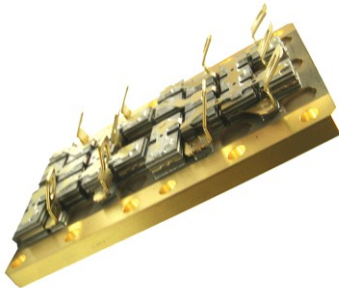
- ✓ **Voltage Rating per leg: 600V / 1200V**
- ✓ **Type of Rectifier: Standard / Fast**
- ✓ **Current Rating of Bridge: Up to 120A**
- ✓ **Operating Temperature: Up to 160°C**
- ✓ **Environment: Compatible to Oil and other Airborne Fluids**
- ✓ **Mechanical Rigidity: Up to 35,000 RPM**
- ✓ **Dimensions: Available in 1" to 4"**

Rapid Prototype



Rotating Rectifier

- Designed to 27,500 RPM
- Max Operating Temperature: 175°C
- Max Reverse Recovery Time: 2.1 µsec
- Max Rating: 1000 V , 120 A



Oil Cooled 3-Phase Rectifier

- 600 Volts 300 Amps
- Excellent thermal performance
- Flexible design configuration (customizable terminals)
- High efficiency heat sink
- Space saving (3.00" L x 2.00" W x 1.00" H)

3-Phase Bridge Modul

- Non-hermetic
- Ceramic-base
- Module Operating TempRange: -55°C to +125°C
- Max Operating Altitude: 50,000 feet
- Module Electrical Rating: 600V, 200A

High Power 3 Phase Bridge

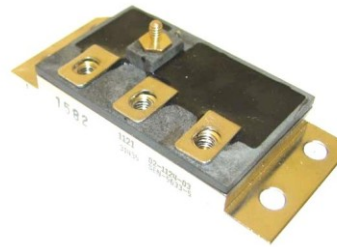
- Module Operating Temperature Range: -55°C to +125°C
- Thermal Impedance rating: 0.67°C/W
- Module Electrical Rating: 1000 V , 150 A

Power Conversion & Power Conditioning



Products

- Power Conditioning Modules
- Converters
- Power Supplies
- Inverters
- Battery Chargers
- DC/DC, AC/DC, DC/AC
- Power Factor Correction

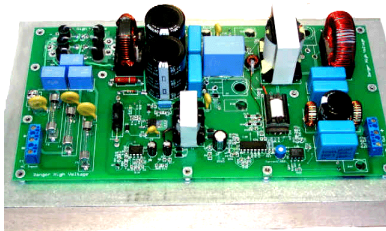


Diode Module

- Ceramic baseplate with plastic lid & epoxy
- 500A, 1200V
- -65C to 175C
- Withstands vibration from engine, 200g, 5 to 2000 Hz

Features / Benefits

- Wide input/output voltage ranges
- Conversion power: 1W to 5000W
- Can incorporate EMI filters
- High density packaging
- Voltage and current detection
- Low output noise and ripple
- Full military & industrial temperature range products
- Distributed regulation using switching & linear technologies



AC/DC Converter

- Operates off 480V 3 phase power source
- Output voltage and current ratings can be tailored to many applications
- Self contained unit



Power Factor Correction Unit

- 1500/3000 Watts, 110/220 VAC
- PF=0.99, 60-400Hz
- Sealed Package High Efficiency
- **3-Phase Power Factor Correction**
- 5KW, 115V Phase Voltage
- 50Hz ~ 400Hz



Power Conditioning Module

- 400HZ, 3 phase 108V AC to 270Vdc
- Per MIL-STD-704
- EMI filter meets MIL-STD-461 PFC
- 500V, 100 joules active bus voltage clamping
- Isolated 28V, 28W auxiliary converter

Custom Hybrids – Integrated Assemblies

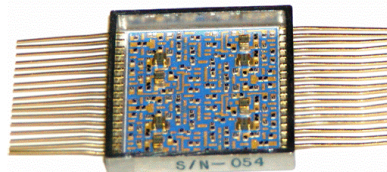


Features/Benefits:

- ✓ Superior thermal performance
- ✓ Flexible design configurations
- ✓ Various power device options
- ✓ High power density
- ✓ Best performance/space ratio over competing technologies
- ✓ Direct Bonded Copper Construction (DBC)
- ✓ High dissipation packaging & copper thick

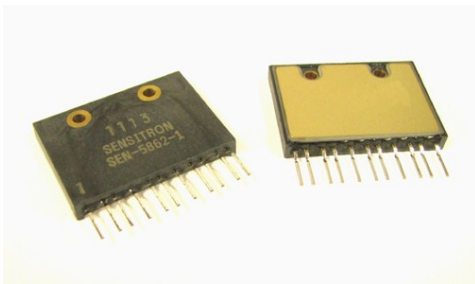
Applications/ Markets:

- Motor Control
- Power Supplies
- Uninterrupted Power Supply
- Radar Systems
- Communications
- Protection Circuits
- Generators
- Fluid Pumps



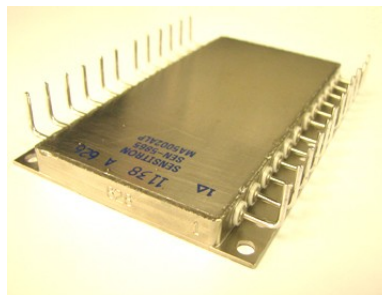
Small Signal Hybrid

- Input Voltage: 12 Vdc max
- Float Voltage: 50 Vdc max
- Parallel redundant translator for satellite



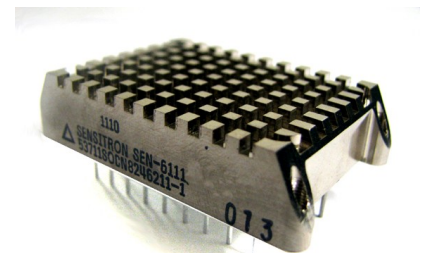
Ultrafast IGBT 3-Ph Bridge

- 600V, 16Amp
- Isolated base plate
- Aluminum nitrate substrate
- Plastic shell and epoxy encapsulation



Half Bridge IGBT Module

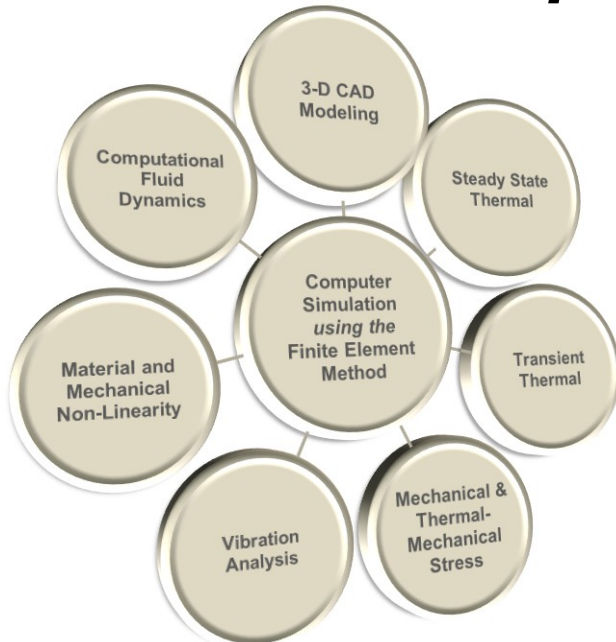
- 600V, 150Amp
- Molybdenum copper base plate
- Space qualified hermetic package
- MIL-PRF-38534 and MIL-STD-883 compliant



Half Bridge Motor Module

- 600V, 7Amp
- High transient power capability
- Very compact package
- High accuracy current monitor on both rails

Product Development: Tools & Capability



Software Tools

- AutoCAD 2005
- Inventor 9
- Solidworks 2010
- Design Modeler
- ANSYS Mechanical v.13
- CFX v.13

Mathematical Tools

- MathCAD 14
- Visual Basic
- APDL
- C++
- Origin 8.1

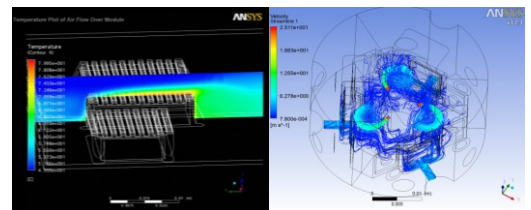
MTBF Computational Tool

- Relx Architect 2008

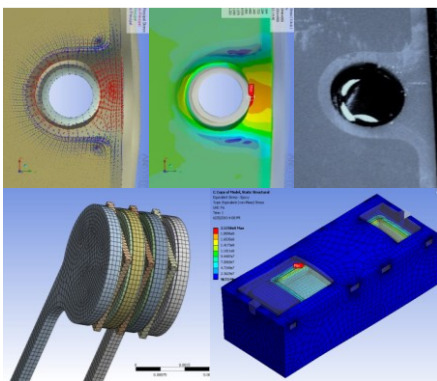
Rapid Prototyping Tool

- ZCorp 3D Plus

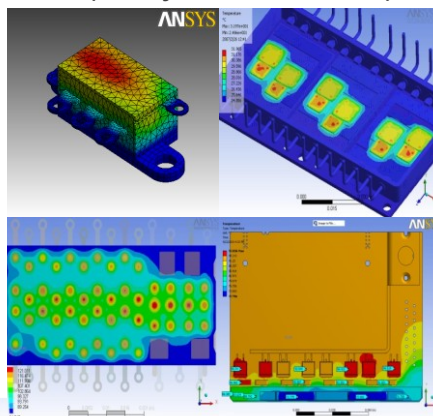
Computational Fluid Dynamics Simulation



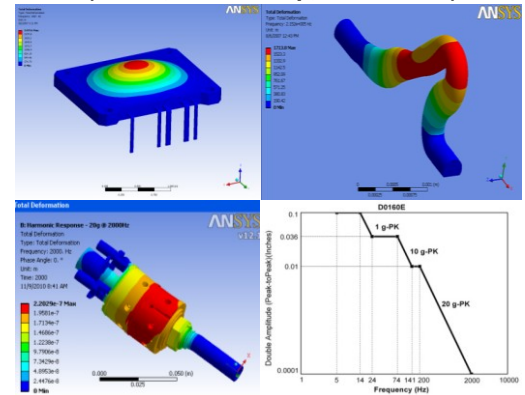
Mechanical Stress (Fracture, Yield, Fatigue)



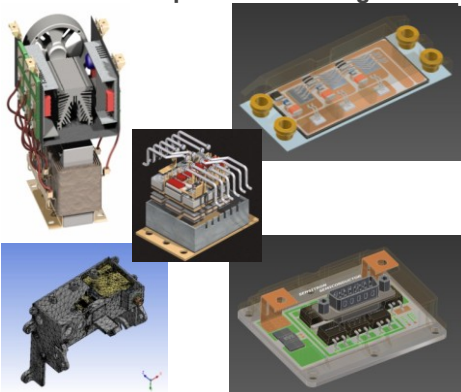
Thermal Simulation (Steady State or Transient)



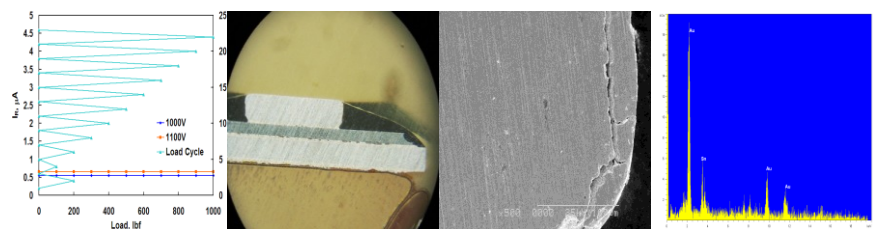
Vibration (Modal, Sine Sweep, or Random)



Complex 3D Modeling



Material Characterization



Mechanical

Cross

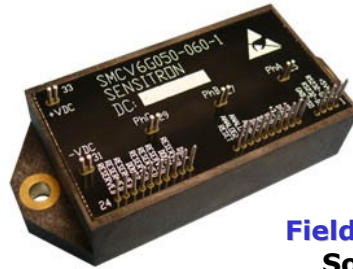
SEM

EDX

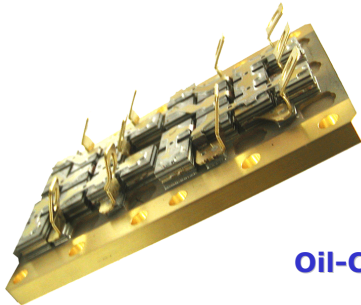
Analysis Result: Advanced Technology



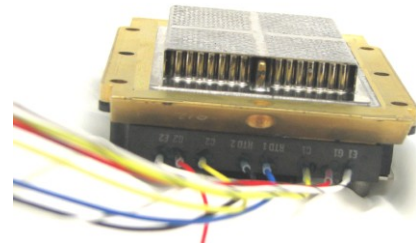
**Multi-Channel Solid State Power
Controller: **Diamondback Series****
Thermal heatsink



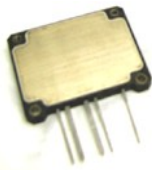
Field Oriented Controller
Software controlled
Software configurable



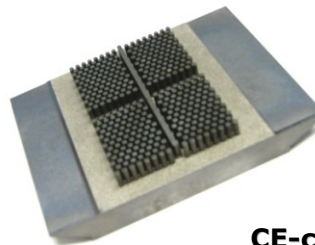
**Oil-Cooled 3 Phase Full Wave
Bridge Rectifier**
Self-locking threaded inserts
High efficiency heatsink



IGBT Module
Pin fin heatsink
Lightweight package



FET Module
Ultrasonic welding
Lightweight design



IGBT Module
CE-controlled expansion
Integrated heatsink

From engineering design to finished product, our advanced simulation and modeling tools enable us to provide you with innovative product to meet your power solutions requirements.

QUALITY

MIL-PRF-19500
MIL-PRF-38534
ISO-9001:2000 Edition
AS9100

Visit online at: www.sensitron.com

SENSITRON SEMICONDUCTOR

Part Number: GO

Product Type: GO

[Products](#) [Support](#) [Company](#) [My Sensitron](#) [Contact Us](#)

PRODUCT HIGHLIGHT: TVS Diode Array-DLTS, DLZ Series

Sensitron offers a series of Transient Voltage Suppressor Array devices that are a direct cross to the industry standard DLTS series. These DLZ / DLTS Diode Array devices are [more...](#)

THE POWER BEHIND YOUR SYSTEM

Sensitron is a leading manufacturer of high reliability power electronic solutions. Markets served include the complete spectrum of high reliability markets including space, aerospace, and defense.

Discrete Diodes and Die Products

Zener Diodes, TVS Diodes, Power Rectifier Diodes, Schottky Diodes, Small Signal Switching Diodes, Space Level Diodes, Zener Die, TVS Die, Schottky Rectifier Die, [more...](#)

[learn more](#)

Motor Controllers and Drivers

Fully Integrated Motor Controllers with Ethernet, CAN, Discrete or Analog Controls, MOSFET and IGBT Drivers, Three-Phase Brushless DC Motor Control, Field Oriented Controller, [more...](#)

[learn more](#)

In The News:

October 2011-Sensitron now offers the SEC Series of high power sensorless BLDC motor digital speed controllers. Designed for rugged high reliability and industrial motor [more...](#)

May 2011- Sensitron now offers motor controller evaluation boards saving time and development costs! The evaluation boards enable tuning and operation [more...](#)

Power Rectification

Schottky Rectifiers, Discrete Power Rectifier Diodes, SiC Schottky Rectifiers and Bridges, Three Phase Bridge Rectifier Assemblies, Primary Power Generation [more...](#)

[learn more](#)

Solid State Power Management

Multi-Channel Solid State Power Controller boards, Remote Power Controllers, High Current / High Voltage Modules, Solid State Power Controller Modules, Solid State Relays [more...](#)

[learn more](#)

New Product:

MIL-PRF-19500 JAN QPL DIODES

Sensitron has received qualification for various JAN QPL Diodes, per MIL-PRF-19500 slash sheets /228, /286, /359, /429, /477 and /427. [more...](#)