



MOBILE LIGHTING SOLUTIONS

WB[®]
WILL-BURT
WWW.WILLBURT.COM

Will-Burt Night Scan®

THE #1 SELLING LIGHT TOWER IN THE WORLD!

The Advantages of Night Scan® by Will-Burt

WILL-BURT ADVANTAGES	VALUE TO CUSTOMER
Higher Height <ul style="list-style-type: none"> • Up to 56% higher • Roof-mounted up to 25 ft. / 7.5 m • Vertical mount up to 30 ft. / 9 m 	More Light Coverage <ul style="list-style-type: none"> • Greater scene illumination • No light glare for oncoming traffic • Light clears tall trees and 2 story houses
Light at Any Height <ul style="list-style-type: none"> • Does not need to be fully extended to illuminate • One button "auto-extend" 	Fast and Flexible <ul style="list-style-type: none"> • Adapts to every situation • Fast operation increases safety and efficiency
Light in Any Direction <ul style="list-style-type: none"> • Dual Tilt Feature • Straight up or down or anywhere in between • Equal light front and back 	Light Where You Need and How You Need It <ul style="list-style-type: none"> • Rooftops, treetops and power lines • Illuminate forward and backward equally - 360° • Illuminate ravines and steep inclines
Lighter Weight <ul style="list-style-type: none"> • Over 42% lighter 	Cost Savings <ul style="list-style-type: none"> • Fuel and installation (no roof reinforcement) • More funds to purchase other equipment
More Power Options <ul style="list-style-type: none"> • All electric with built-in air elevation • Onboard truck air system • AC or DC powered models • Internal power wires 	Flexible Installation <ul style="list-style-type: none"> • New build or aftermarket compatible • No generator required options • Protected from the elements and damage
More Installation Options <ul style="list-style-type: none"> • 8 platforms to choose from • Roof mount to cab or body • Vertical mount internal or external 	Meets Your Unique Vehicle Specifications <ul style="list-style-type: none"> • Allows installation on more vehicle types • New and Aftermarket
More Light Options <ul style="list-style-type: none"> • The most popular brands • LED and Halogen types • Over 400 light and tower combinations 	Meets Your Specific Requirements <ul style="list-style-type: none"> • Technically advanced to budget friendly • Lower power consumption • High lumen output
Pneumatic Tube Construction <ul style="list-style-type: none"> • Anodized aluminum mast tubes 	Reliable in Extreme Environments <ul style="list-style-type: none"> • As tested and proven, from the cold and ice of Canada to the sand and dust of Afghanistan

nightscan®
by Will-Burt

**Because You Need Light
Every Night**



Why You Need a Night Scan Light Tower

Safety is the number one requirement when answering a call and nighttime operations create an even bigger challenge. Night Scan light towers create a safer work environment by lighting the scene from above, like natural daylight.

Overhead lighting reduces glare for oncoming traffic and does not blind the crew. Night Scan light towers allow you to customize light intensity and coverage by stopping the tower at any height before it is fully extended. Installation flexibility is delivered with three lightweight options; roof-mounted to the apparatus, internally installed extending through the roof or mounted externally to the vehicle.

All Night Scan light towers meet or exceed all NFPA 1901-16 requirements. The Made in the USA, maintenance-free design operates in nearly any environment – from dusty, hot deserts to sub-freezing, snowy conditions. The Powerlite dual-tilt light option allows you to illuminate 360° of the scene by equally distributing light front and back.

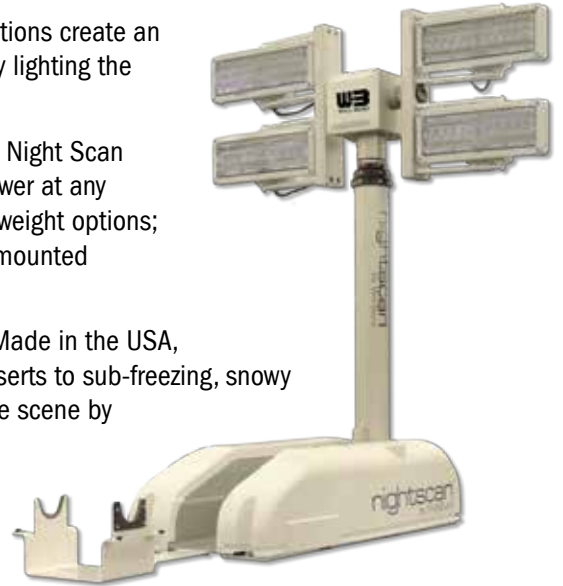
The nearly limitless options of Night Scan ensures that it will meet the needs of your department. Hilly terrain or tall buildings might require a light tower of 30 feet with six high-powered lamps. Small vehicles might be better suited with a 3.25 foot Night Scan Chief model with two lamps. The towers can accommodate any vehicle's electrical system with either LED or Halogen lamps from the best brands – FRC, Whelen, ROM and Will-Burt.

The always upright design of Night Scan provides the best platform for adding optional strobe lamps or video cameras. Video cameras can be used for scene recording, training or remote monitoring of operations. Will-Burt has a full range of video options from simple, fixed lens cameras to high-definition and thermal imaging PTZ cameras.

Choose Night Scan and operate under the safest nighttime conditions, because You Need Light Every Night!

Selecting the Night Scan That is Best For You

1. Review your total height requirements. If your terrain is hilly or there are tall trees or buildings, you might want a taller tower, up to 30 feet. Remember that the mounting location will add height as well. Night Scan platforms are available from 3.25' to 30'.
 2. How much space is available for the light tower? If ample roof space is available; a lightweight, compact, folding, roof-mounted tower is a good option. If space is tight, a through the roof vertical light tower or side mounted vertical tower might be the best option.
 3. How much light do you need? 2, 4 or 6 LED or halogen lamp options are available. Total lumens can reach 210,000.
 4. What type of electrical system is available? 12 and 24 DC options are available for vehicle electrical systems and 120 and 240 AC options are available for vehicles that have on-board generators.
 5. Select the tower remote control that is best for your needs. Wired controllers, panel-mount controllers and wireless controllers are available.
 6. Last, what options are needed? Warning strobes and video cameras are available on most Night Scan light towers.
- See page 10 for the tower and light options or visit <http://www.willburt.com/support/support-center/ez-spec/> for options and downloadable specifications.



CONTENTS



**NIGHT SCAN®
CHIEF**5



**NIGHT SCAN®
TOWER AND LIGHT
PACKAGE OPTIONS**.....10-11



**NIGHT SCAN®
POWERLITE
AND XTREME**..... 6-7



**VALUE-ADDED
ACCESSORIES**.....12



**NIGHT SCAN® VERTICAL
COMPLETE AND VERTICAL
LIGHT TOWER**8



**MOBILE VIDEO
SYSTEMS**13



LIGHTING GUIDE9



**LED
UPGRADE KITS** 14-15

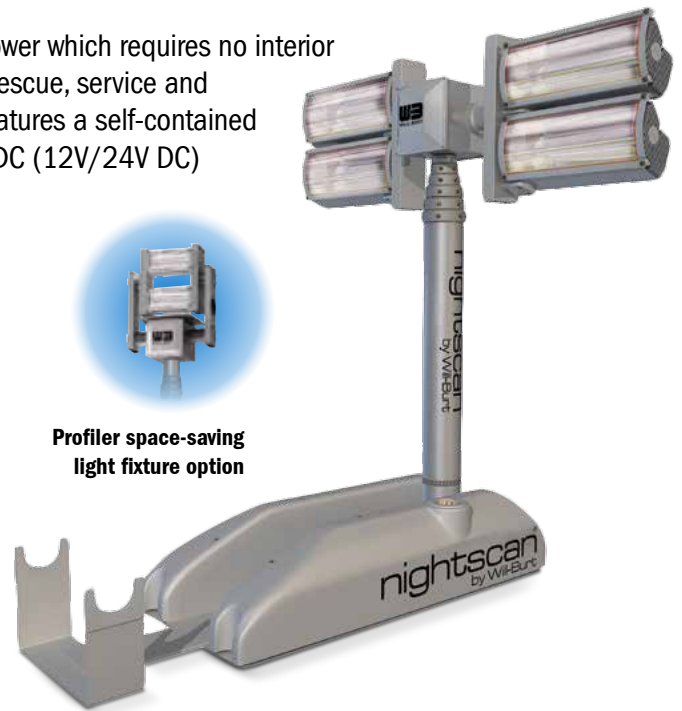


NIGHT SCAN® CHIEF

The Will-Burt Night Scan® Chief is a roof-mounted, fold-down light tower which requires no interior vehicle space. It is typically used on medium-size rescue, pumper rescue, service and utility vehicles or smaller wrecker vehicles. The Night Scan® Chief features a self-contained air system (no external air supply needed) and is available with all DC (12V/24V DC) operations in which generator or inverter is not required.

Night Scan® Chief	1.0	1.8	2.3
Height (ft.) / (m)	3.25 / 1	6 / 1.8	7.5 / 2.3
System Weight Range (lb.) / (kg)	97 lb. / 44 kg - 135 lb. / 61 kg		
Auto Deploy and Auto Stow®	Yes	Yes	Yes
Time to Light	8 seconds	8 seconds	10 seconds
Number of Lights Available	2	2 or 4	2 or 4
Light Type Available	LED / Halogen	LED / Halogen	LED / Halogen
Maximum Lumens	39200	140000	140000
Full Pan and Tilt Light Positioning	Yes	Yes	Yes
Opposable Light Fixtures	No	No	No
VDC / Watts Maximum	12 or 24 / 920	12 or 24 / 920	12 or 24 / 920
VAC / Watts Maximum	120 or 240 / 6000	120 or 240 / 6000	120 or 240 / 6000
Profiler - Space-Saving Fixture Option	Yes - 2 or 3 lights	Yes - 2 or 3 lights	Yes - 2 or 3 lights
Strobe Light Option	Yes	Yes	Yes
Camera Option	Yes	Yes	Yes
*Wind Speed Survival	140+ mph / 225+ km/h	140+ mph / 225+ km/h	114 - 140 mph / 184 - 225 km/h
Operating Temperature	-22°F to +149°F / -30°C to +65°C		

*Varies depending on light package - 125% NFPA Safety Factor

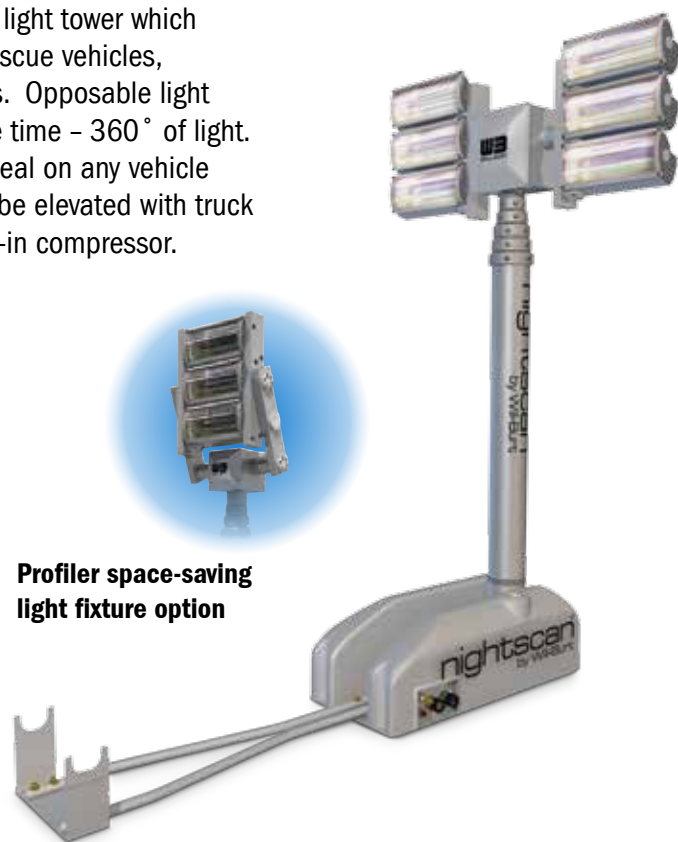


NIGHT SCAN® POWERLITE

The Will-Burt Night Scan® Powerlite is a roof-mounted, fold-down light tower which requires no interior vehicle space. It is typically used on heavy-rescue vehicles, mobile command centers, airport ARFF vehicles or large wreckers. Opposable light fixtures provide equal lighting forward and backward at the same time – 360° of light. Delivering up to 210,000 lumens, the Night Scan® Powerlite is ideal on any vehicle where maximum light is required. The Powerlite 3.0 and 4.5 can be elevated with truck air or optional on-board compressor. The 2.3 comes with a built-in compressor.

Night Scan® Powerlite	2.3	3.0	4.5
Height (ft.) / (m)	7.5 / 2.3	10 / 3	15 / 4.5
System Weight Range (lb.) / (kg)	139 lb. / 63 kg – 178 lb. / 81 kg		
Auto Deploy & Auto Stow®	Yes	Yes	Yes
Time to Light	8 seconds	12 seconds	14 seconds
Number of Lights Available	4 - Night Scan XL 160 only	4 or 6	4 or 6
Light Type Available	LED	LED / Halogen	LED / Halogen
Maximum Lumens	60000	210000	210000
Full Pan & Tilt Light Positioning	Yes	Yes	Yes
Opposable Light Fixtures	Yes	Yes	Yes
VDC / Watts Maximum	12 or 24 / 500	24 / 1950	24 / 1950
VAC / Watts Maximum	N/A	120 or 240 / 9000	120 or 240 / 9000
Profiler - Space-Saving Fixture Option	No	Yes - 2 or 3 lights	Yes - 2 or 3 lights
D-TEC II® Power Line Detection System Option	No	Yes	Yes
Strobe Light Option	No	Yes	Yes
Camera Option	Yes	Yes	Yes
*Wind Speed Survival	114 - 140 mph / 184 - 225 km/h	86 - 140 mph / 138 - 225 km/h	69 - 118 mph / 111 - 190 km/h
Operating Temperature	-22°F to +149°F / -30°C to +65°C		

*Varies depending on light package – 125% NFPA Safety Factor



Profiler space-saving light fixture option

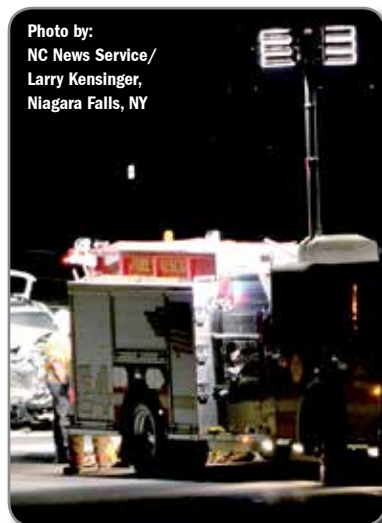


Photo by:
NC News Service/
Larry Kensinger,
Niagara Falls, NY



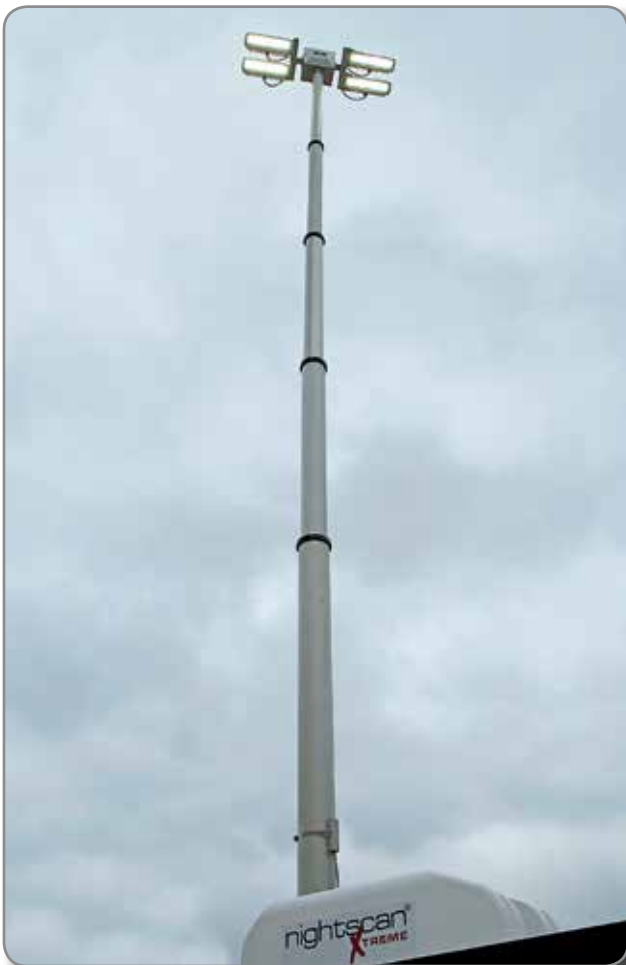


NIGHT SCAN® XTREME

The Will-Burt Night Scan® Xtreme is a roof-mounted, fold-down light tower which requires no interior vehicle space. It has been designed for applications where maximum height is required, such as hilly terrain, locales with mature trees or urban areas with tall buildings. Opposable light fixtures provide equal lighting forward and backward at the same time – 360° of light. The Night Scan® Xtreme can be elevated with truck air or optional on-board compressor. When the situation requires maximum elevation, Night Scan® Xtreme is the light tower you need.

Night Scan® Xtreme	6.0	7.5
Height (ft.) / (m)	20 / 6	25 / 7.5
System Weight Range (lb.) / (kg)	161 lb. / 73 kg - 199 lb. / 91 kg	
Auto Deploy & Auto Stow®	Yes	Yes
Time to Light	17 seconds	21 seconds
Number of Lights Available	2, 4 or 6	2 or 4
Light Type Available	LED / Halogen	LED / Halogen
Maximum Lumens	210000	140000
Full Pan & Tilt Light Positioning	Yes	Yes
Opposable Light Fixtures	Yes	Yes
VDC / Watts Maximum	24 / 864	24 / 864
VAC / Watts Maximum	120 or 240 / 9000	120 or 240 / 6000
Profiler – Space-Saving Fixture Option	No	No
D-TEC II® Power Line Detection System Option	Yes	Yes
Strobe Light Option	Yes	Yes
Camera Option	Yes	Yes
*Wind Speed Survival	64 - 94 mph / 103 - 151 km/h	62 - 78 mph / 100 - 126 km/h
Operating Temperature	-22°F to +149°F / -30°C to +65°C	

*Varies depending on light package – 125% NFPA Safety Factor



NIGHT SCAN® VERTICAL COMPLETE

The Will-Burt Night Scan® Vertical Complete is a vertically mounted light tower which was created to be installed externally to the side or rear of a vehicle. This light tower includes an on-board compressor for elevation and requires no truck air. Used for elevating lights and/or cameras, it is perfect for smaller vehicles where space is limited. Measuring less than 6 inches (16 cm) deep, it can even fit between the cab and box. The compressor box can be placed below or beside the mast to suit your specific vehicle requirements.

Night Scan® Vertical Complete	2.3
Height (ft.) / (m)	7.5 / 2.3
Auto Deploy & Auto Stow®	Yes
Number of Lights Available	2 or 4
Light Type Available	LED / Halogen
Maximum Lumens	140000
Full Pan & Tilt Light Positioning	Yes
Opposable Light Fixtures	No
VDC / Watts Maximum	12 or 24 / 920
VAC / Watts Maximum	120 or 240 / 6000
Profiler – Space-Saving Fixture Option	No
D-TEC II® Power Line Detection System Option	No
Strobe Light Option	Yes
Camera Option	Yes
Operating Temperature	-22°F to +149°F / -30°C to +65°C



NIGHT SCAN® VERTICAL LIGHT TOWER






The Will-Burt Night Scan® Vertical Tower is a vertically mounted light tower which may be installed internally or externally to the side or rear of a vehicle. Used for elevating lights and/or cameras, it is typically used on heavy rescue vehicles, full-size mobile command centers, airport ARFF vehicles and large wreckers. Delivering up to 210,000 lumens, the Night Scan® Vertical Light Tower is ideal on any vehicle where maximum light and height are required.



Night Scan® Vertical	5.4-17	6-20	7-25	8-30
Height (ft.) / (m)	17 / 5	20 / 6	25 / 7.6	30 / 9
Auto Deploy & Auto Stow®	Yes	Yes	Yes	Yes
Number of Lights Available	4 or 6	4 or 6	4 or 6	4 or 6
Light Type Available	LED / Halogen	LED / Halogen	LED / Halogen	LED / Halogen
Maximum Lumens	210000	210000	210000	210000
Full Pan & Tilt Light Positioning	Yes	Yes	Yes	Yes
Opposable Light Fixtures	Yes	Yes	Yes	Yes
VDC / Watts Maximum	24 / 1,950	24 / 1,950	24 / 1,950	24 / 1,950
VAC / Watts Maximum	120 or 240 / 9000	120 or 240 / 9000	120 or 240 / 9000	120 or 240 / 9000
Profiler – Space-Saving Fixture Option	Yes	Yes	Yes	Yes
D-TEC II® Power Line Detection System Option	Yes	Yes	Yes	Yes
Strobe Light Option	Yes	Yes	Yes	Yes
Camera Option	Yes	Yes	Yes	Yes
Operating Temperature	-22°F to +149°F / -30°C to +65°C			

LIGHTING GUIDE

Will-Burt offers a variety of light options from the top brands in lighting to meet our customers' specific needs. Virtually every electrical system requirement can be met with our lighting solutions. Lighting packages are available in 12 and 24 volt DC and 120 and 240 volt AC. The most sophisticated and long lasting LED lighting available in the market today is offered in low power consumption and high lumen output arrangements. Halogen packages are available for applications where traditional, lower initial cost lighting is needed.

Lighting Comparison	LED (Light Emitting Diode)	Halogen
Light Description	LED lamps are the most efficient light source available, producing more lumens per watt than any other type. LEDs also produce instant light that is closer to daylight than HID or Halogen, which can make a scene appear brighter. LEDs are the longest lasting source of light because they do not use a filament to produce light. LEDs are the most costly light to purchase because of the advanced technology required to produce them; however, lifetime cost is the lowest.	Halogen lamps provide high lumen output and instant light at a low price. However, Halogen bulbs do consume the most power per lumen and also have the shortest life expectancy, requiring bulb replacement throughout the life of the apparatus.
Lumen Range / Lamp	8,000 - 28,000	10,500 - 35,000
Average Expected Life	50,000 hours	250 hours
Initial Cost	██████████	████
Lifetime Cost	████	██████████
Cost / Lumen	██████████	████
Power Consumption / Lumen	████	██████████
Brands	   	

nightscan[®]

by Will-Burt

Tower and Light Package Options



Chief



Chief Profiler

Brand	Model	Light Warranty	Type	Lumens / Lamp*	Watts	Voltage	Amps	1.0	1.8	2.3	1.8	2.3
								Tower Height				
								3.25 ft.	6 ft.	7.5 ft.	6 ft.	7.5 ft.
		6	LED	20000	220	120 / 240	1.8 / 0.9		2	2		
FRC		5	LED	11000	90	12	7.5	2	2 / 4	2 / 4	2 / 3	2 / 3
			LED	11000	90	24	3.75	2	2 / 4	2 / 4	2 / 3	2 / 3
			LED	Now 20,000 Lumens	160	12	13		2 / 4	2 / 4		
			LED		160	24	6.5		2 / 4	2 / 4		
FRC		5	LED	20000	216	12	18		2	2		
			LED	20000	216	24	9		2	2 / 4		
			LED	20000	230	120 / 240	2 / 1		2	2 / 4		
FRC		5	LED	28000	230	12	19.2		2	2		
			LED	28000	230	24	9.6		2	2 / 4		
			LED	28000	325	120 / 240	2.8 / 1.4		2	2 / 4		
FRC		5	LED	28000	230	12	19.2		2	2		
			LED	28000	230	24	9.6		2	2 / 4		
			LED	28000	325	120 / 240	2.8 / 1.4		2	2 / 4		
FRC		0	Halogen	10500	500	120	4.2		2 / 4	2 / 4	2 / 3	2 / 3
			Halogen	19600	750	120 / 240	6.3 / 3.1	2	2 / 4	2 / 4	2 / 3	2 / 3
			Halogen	22000	1000	120 / 240	8.3 / 4.2		2 / 4	2 / 4		
			Halogen	35000	1500	240	6.25		2 / 4	2 / 4		
FRC		0	Halogen	16100	750	120 / 240	6.25 / 3.5	2	2 / 4	2 / 4	2 / 3	2 / 3
			Halogen	22000	1000	240	4.2		2 / 4	2 / 4		
WHILEN		5	LED	7300	80	12	6	2				
WHILEN		5	LED	8000	75	12	6.25	2	2 / 4	2 / 4	2 / 3	2 / 3
			LED	8000	85	24	3.5	2	2 / 4	2 / 4	2 / 3	2 / 3
WHILEN		5	LED	16000	150	12	13		2 / 4	2 / 4		
			LED	16000	150	24	6.5		2 / 4	2 / 4		
			LED	15000	150	120	1.25		2 / 4	2 / 4		
WHILEN		5	LED	16000	150	12	12.5		2 / 4	2 / 4		
			LED	15000	150	120	1.25		2 / 4	2 / 4		
WHILEN		5	LED	20000	225	12	16.5		2	2		
			LED	20000	210	24	8.25		2	2 / 4		
			LED	17000	180	120	1.5		2	2 / 4		
W3 WILL-BURT		10	LED	9000	90	12 / 24	8.5 / 4.25	2	2	2/4		
W3 WILL-BURT		10	LED	Now 20,000 Lumens August 2012	110	12	9.2		2/4	2/4		
			LED		110	24	4.6		2/4	2/4		

*Lumens per light manufacturer specifications - Multiply lumens by number of lamps for total lumens.



Powerlite



Powerlite Profiler



Powerlite Xtreme

Vertical
Complete

Vertical

***Visit nightscan.com
to customize a
light tower using our
Night Scan EZ Spec
interactive table**

2.3

3.0

4.5

3.0

4.5

6.0

7.5

2.3

5.4-17

6-20

7-25

8-30

Tower Height

7.5 ft.

10 ft.

15 ft.

10 ft.

15 ft.

20 ft.

25 ft.

7.5 ft.

17 ft.

20 ft.

25 ft.

30 ft.

4

4

2

2

2

2 / 4

2 / 4

2 / 4

2 / 4

2

2 / 4

2 / 4

2

4

4

3

3

2 / 4

2 / 4

4 / 6

4 / 6

3

3

2 / 4

2

2 / 4

4 / 6

4 / 6

4 / 6

4 / 6

2

4

4

3

3

2

4 / 6

4 / 6

3

3

2 / 4

2

2

4 / 6

4 / 6

4 / 6

4 / 6

2

4

4

3

3

2

4 / 6

4 / 6

3

3

2 / 4

2

2

4 / 6

4 / 6

4 / 6

4 / 6

4 / 6

4 / 6

4 / 6

2 / 4

2 / 4

4 / 6

4 / 6

4 / 6

4 / 6

4 / 6

4 / 6

4 / 6

2 / 4

2 / 4

4 / 6

4 / 6

4 / 6

4 / 6

4 / 6

4 / 6

3

3

4 / 6

2 / 4

2 / 4

4 / 6

4 / 6

4 / 6

4 / 6

4 / 6

4 / 6

3

3

4 / 6

2 / 4

2 / 4

4 / 6

4 / 6

4 / 6

4 / 6

4 / 6

4 / 6

3

3

4 / 6

2 / 4

2 / 4

4 / 6

4 / 6

4 / 6

4 / 6

4 / 6

4 / 6

3

3

4 / 6

2 / 4

2 / 4

4 / 6

4 / 6

4 / 6

4 / 6

2 / 4

2 / 4

2 / 4

2 / 4

2 / 4

2 / 4

4 / 6

4 / 6

3

3

4 / 6

2 / 4

2 / 4

4 / 6

4 / 6

4

4 / 6

4 / 6

3

3

4 / 6

2 / 4

2 / 4

4 / 6

4 / 6

4 / 6

4 / 6

2 / 4

4 / 6

4 / 6

3

3

4 / 6

2 / 4

2 / 4

4 / 6

4 / 6

4 / 6

4 / 6

2 / 4

4 / 6

4 / 6

2 / 4

2

2 / 4

4

4

4

4 / 6

4 / 6

2 / 4

2

2 / 4

4 / 6

4 / 6

4 / 6

4 / 6

2 / 4

4

2 / 4

4

4 / 6

4 / 6

4 / 6

2 / 4

2 / 4

4 / 6

4 / 6

4 / 6

4 / 6

VALUE-ADDED ACCESSORIES

STROBE LIGHTS

Will-Burt lighting solutions include reliable, compact strobe lights for added visibility and safety. Strobes feature a rugged, impact-resistant polycarbonate dome and base, exceptional fiber optics, and a double-flash power supply that automatically adjusts to function at any voltage – from 12V to 24V DC. They meet SAE J1318 Class 3 specifications and are available in LED beacons and a variety of colors: amber, blue, clear, red and green.



REMOTE CONTROLLERS

Will-Burt offers a breadth of full-function, simple-to-use remote controllers. Designed for rugged duty and gloved hands, they're impervious to even the harshest weather and operating conditions. Wired remote controls now have an emergency stop button built in; there is no longer a need for a junction box. Every Chief, Vertical Complete, Powerlite, Xtreme and Vertical controller has one button auto-stop feature along with a digital display. Choose from our handheld wired models or a panel-mount version. Or, for even greater flexibility, try our wireless, rechargeable remotes.

WIRED REMOTES



Chief and
Vertical Complete



Chief and
Vertical Complete
(NFPA Start Button)



Powerlite,
Xtreme and Vertical



Powerlite,
Xtreme and Vertical
(NFPA Start Button)

PANEL MOUNT CONTROLS



Chief and
Vertical Complete



Chief and
Vertical Complete
(NFPA Start Button)



Powerlite, Xtreme
and Vertical



Powerlite, Xtreme
and Vertical
(NFPA Start Button)

WIRELESS REMOTES



Chief and
Vertical Complete



Powerlite,
Xtreme and
Vertical

D-TEC II® LIVE POWER LINE DETECTION SYSTEM

The D-TEC II® safety unit, a Will-Burt exclusive, provides overhead power line and obstacle detection, as well as above-the-mast illumination. Featuring factory preset sensitivity settings, the built-in anticollision system automatically stops light tower extension, while its high-voltage sensor alerts upon power line and obstacle detection. It's available on the Night Scan® Powerlite, Night Scan® Xtreme and Night Scan® Vertical light towers.



MOBILE VIDEO SYSTEMS

Will-Burt Night Scan® Light Towers deliver the capability of camera mounting, with or without lights. A camera, elevated to a height from 3.25 ft. to 30 ft. above the vehicle roof, allows ground personnel to survey an emergency scene quickly and efficiently. In addition, the system offers real-time monitoring and surveillance for accurate records and documentation. Will-Burt has several camera, DVR, monitor and software packages that fit a variety of needs. Our video solutions experts can also design a customized package to fit your specific requirements. Below is a sample of our video solutions.



Feature		WONWOO - IR	WONWOO	Sidewinder SD	Sidewinder HD	Sidewinder TI
Camera Type	Analog	PTZ - Analog Infrared	PTZ - Analog	PTZ - Analog or IP Standard Definition	PTZ - Analog or IP High Definition	PTZ - Analog or IP Thermal Imaging
Lens	8mm / 2.8 mm	3.4mm - 122.4mm	3.4mm - 122.4mm	3.4mm - 122.4mm	4.7mm - 94.0mm	19mm
Image Sensor	Sharp CCD	Exview HAD CCD	Exview HAD CCD	Interline Transfer CCD	2MP CMOS High Definition	8-14 micron spectral uncooled microbolometer
Resolution	510 x 492 / 420 TV lines	1028 x 508 / 700 TV Lines	1028 x 508 / 700 TV Lines	768 x 582 / 520 TV Lines	1920 x 1080	320 x 240 / 225 TV Lines
Optical Zoom / Digital Zoom	Fixed	36x / 32x	36x / 32x	35x / 10x	20x / 10x	N/A
Low Light	0 LUX with 10 IR LED's	0.2 LUX with 46 IR LED's / 80m	0.5 LUX	0.01 LUX in IR mode	Less than 3 LUX	
Pan & Tilt	No	360° endless pan / -22.5° - 90° tilt	360° endless pan / -45° - 90° tilt	360° endless pan and tilt	360° endless pan and tilt	360° endless pan and tilt
Ingress Protection	IP67 - Waterproof	IP66 - Outdoors	IPX5	IP67 - Waterproof	IP67 - Waterproof	IP67 - Waterproof



2 Camera System



Video + Thermal

Feature	Silent Sentinel Oculus SD	Silent Sentinel Oculus HD	Silent Sentinel Oculus IR SD	Silent Sentinel Oculus IR HD
Camera Type	PTZ - Analog or IP		PTZ - Analog or IP w/Infrared Illuminator - 100 meters	
Lens	3.4mm to 122mm	4.3mm to 129.0mm	3.4mm to 122mm	4.3mm to 129.0mm
Image Sensor	1/4" Exview CCD	1/2.8" type Exmor CMOS sensor	1/4" Exview CCD	1/2.8" type Exmor CMOS sensor
Resolution	530 TV lines	Approx 3.27 million	530 TV lines	Approx 3.27 million
Optical Zoom / Digital Zoom	40x / 12x	30x / 12x	40x / 12x	30x / 12x
Low Light	1.4 lux color, 0.01 lux mono	1.7 lux, 0.5 lux in High Sens Mode	1.4 lux color, 0.01 lux mono	1.7 lux, 0.5 lux in High Sens Mode
Pan & Tilt	360° pan / +90° to -30° tilt		360° pan / +90° to -30° tilt	
Ingress Protection	IP67 - Waterproof		IP67 - Waterproof	

Video Camera Feature	Silent Sentinel - Oculus TI SD	Silent Sentinel - Oculus TI HD	Thermal Camera Feature	Specification
Camera Type	PTZ - Analog or IP Video + Thermal Imager		Sensor type	Uncooled VOx Microbolometer
Lens	3.4mm to 122mm	4.3mm to 129.0mm	Pixel size	17µ
Image Sensor	1/4" Exview CCD	1/2.8" type Exmor CMOS sensor	Spectral band	8-14µm
Resolution	530 TV lines	Approx 3.27 million	Thermal sensitivity	<50mK
Optical Zoom / Digital Zoom	40x / 12x	30x / 12x	Array format	320 x 240 or 640 x 480
Low Light	1.4 lux color, 0.01 lux mono	1.7 lux, 0.5 lux in High Sens Mode	Frames rates	9Hz, 30Hz
Pan & Tilt	360° pan / +90° to -30° tilt		Image control	White hot, Black hot, Invert
Ingress Protection	IP67 - Waterproof		Focus	Fixed, preset, Athermalised
			Zoom	E-zoom 1-4, Region of interest
			FOV	35mm (other FOV available)

LED LIGHTING UPGRADE KITS

nightscan[®]
by Will-Burt

The latest in LED light technology is now available for many in-service halogen and HID Night Scan light towers. Will-Burt has created retrofit kit packages with 2, 4 and 6 lights and 12 / 24 VDC and 120 / 240 VAC options. The most popular light brands are available from FRC, Whelen and Will-Burt. Upgrade today and experience the benefits of LED scene lighting – longer life, low power consumption and rugged reliability. Available for do-it-yourself installation or contact Will-Burt for factory installation.

In just a few minutes we can determine if your Night Scan is eligible for an LED upgrade:

1. Does the RCP unit (box at top of mast where lights connect) have square, convex plastic covers? If yes, continue, if no, the light tower cannot be upgraded.
2. Find the part number (begins with NS) and model number (9 digit number) from the data plate located near the base of the mast.

9 digit number: _____

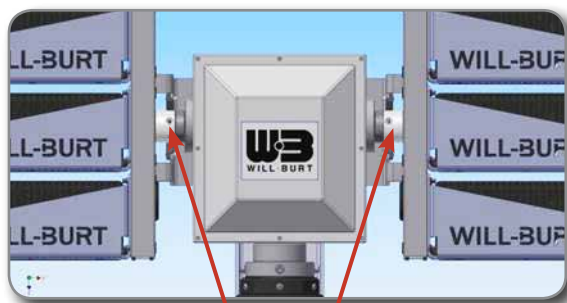
NS: _____

3. Determine maximum total width and maximum height from top of RCP available for new light package. Is the unit in a well? Are there other obstructions? LED light fixtures are often wider than halogen fixtures.

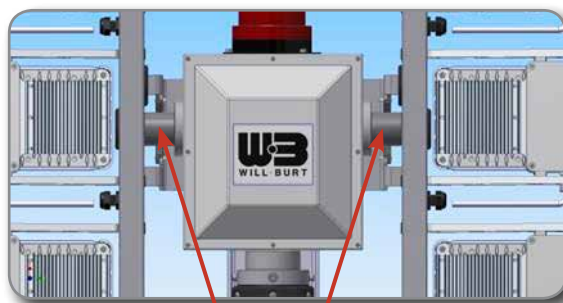
Maximum width: _____

Maximum height from top of RCP: _____

4. Are the current lights connected via a shaft or collar?



Collar has screws



Shaft is connected internally - No visible screws

5. Call Will-Burt to review your options and place your order 330-684-4000.

Available for do-it-yourself or Will-Burt Factory Service installation.

FRC

WHELEN

nightscan[®]
by Will-Burt



LED LIGHTING UPGRADE KITS

Collar Light Assembly Connection

nightscan[®]
by Will-Burt

Brand	Model	Light Warranty	Volts	Number of Lights	Total Lumens	Total Watts	Chief 1.8	Chief 2.3	Powerlite 3.0	Powerlite 4.5	Vertical 15.4-17	Vertical 6-20	Vertical 7-25	Vertical 8-30	RCP Style
Whelen	Pioneer Plus Flood	5	12	2	16,000	150	x	x							Collar
Whelen	Pioneer Plus Flood/Flood	5	12	2	32,000	300	x	x							Collar
Whelen	Pioneer Plus Spot/Flood	5	12	2	32,000	300	x	x							Collar
F R C	SPECTRA	5	12	2	40,000	460	x	x							Collar
Whelen	Pioneer Plus Flood	5	12	4	32,000	300	x	x							Collar
Whelen	Pioneer Plus Spot/Flood	5	12	4	64,000	600	x	x							Collar
F R C	Evolution II	5	12/24	2	22,000	180	x	x							Collar
F R C	Evolution II	5	12/24	2	40,000	320	x	x							Collar
Will-Burt	Night Scan XL 160	10	12/24	2	30,000	250	x	x							Collar
F R C	Evolution II	5	12/24	2	30,000	320	x	x							Collar
F R C	Evolution II	5	12/24	4	32,000	360	x	x	x	x	x	x	x	x	Collar
Will-Burt	Night Scan XL 160	10	12/24	4	60,000	500	x	x							Collar
Will-Burt	Night Scan XL 160	10	12/24	6	90,000	750			x	x	x	x	x	x	Collar
Whelen	Pioneer Plus Flood	5	24	4	16,000	150	x	x							Collar
Whelen	Pioneer Plus Flood/Flood	5	24	2	32,000	150	x	x							Collar
Whelen	Pioneer Plus Spot/Flood	5	24	2	32,000	300	x	x							Collar
Whelen	Pioneer Plus Flood	5	24	4	32,000	300	x	x							Collar
F R C	Evolution II	5	24	4	60,000	640	x	x	x	x	x	x	x	x	Collar
Whelen	Pioneer Plus Flood/Flood	5	24	4	64,000	600	x	x	x	x	x	x	x	x	Collar
Whelen	Pioneer Plus Spot/Flood	5	24	4	64,000	600	x	x	x	x	x	x	x	x	Collar
F R C	SPECTRA	5	24	4	80,000	920		x	x	x					Collar
Whelen	Pioneer Plus Flood	5	120	2	16,000	150	x	x							Collar
Whelen	Pioneer Plus Flood/Flood	5	120	2	30,000	300	x	x							Collar
Whelen	Pioneer Plus Spot/Flood	5	120	2	30,000	300	x	x							Collar
F R C	SPECTRA	5	120	2	40,000	460	x	x							Collar
Whelen	Pioneer Plus Flood	5	120	4	32,000	300	x	x							Collar
Whelen	Pioneer Plus Flood/Flood	5	120	4	60,000	600	x	x	x	x	x	x	x	x	Collar
Whelen	Pioneer Plus Spot/Flood	5	120	4	60,000	600	x	x	x	x	x	x	x	x	Collar
F R C	SPECTRA	5	120	4	80,000	920			x	x	x	x	x	x	Collar
F R C	SPECTRA Max	5	120	4	112,000	1300			x	x	x	x	x	x	Collar
F R C	SPECTRA Max-S	5	120	4	112,000	1300			x	x	x	x	x	x	Collar
Whelen	Pioneer Plus Flood/Flood	5	120	6	90,000	900			x	x	x	x	x	x	Collar
Whelen	Pioneer Plus Spot/Flood	5	120	6	90,000	900			x	x	x	x	x	x	Collar
F R C	SPECTRA	5	120	6	120,000	1380			x	x	x	x	x	x	Collar
F R C	SPECTRA Max	5	120	6	168,000	1950			x	x	x	x	x	x	Collar
F R C	SPECTRA Max-S	5	120	6	168,000	1950			x	x	x	x	x	x	Collar
F R C	SPECTRA	5	240	2	40,000	460	x	x							Collar
F R C	SPECTRA	5	240	4	80,000	920			x	x	x	x	x	x	Collar
F R C	SPECTRA Max	5	240	4	112,000	1300			x	x	x	x	x	x	Collar
F R C	SPECTRA Max-S	5	240	4	112,000	1300			x	x	x	x	x	x	Collar
F R C	SPECTRA	5	240	6	120,000	1380			x	x	x	x	x	x	Collar
F R C	SPECTRA Max	5	240	6	168,000	1950			x	x	x	x	x	x	Collar
F R C	SPECTRA Max-S	5	240	6	168,000	1950			x	x	x	x	x	x	Collar

Shaft Light Assembly Connection

Brand	Model	Light Warranty	Volts	Number of Lights	Total Lumens	Total Watts	Chief 1.8	Chief 2.3	Powerlite 3.0	Powerlite 4.5	Vertical 15.4-17	Vertical 6-20	Vertical 7-25	Vertical 8-30	RCP Style
Whelen	Pioneer Plus Flood	5	12	2	16,000	150	x	x							Shaft
Whelen	Pioneer Plus Flood/Flood	5	12	2	32,000	300	x	x							Shaft
F R C	Evolution	5	12	4	60,000	640	x	x							Shaft
F R C	Evolution	5	12/24	2	16,000	180	x	x							Shaft
F R C	Evolution	5	12/24	2	30,000	320	x	x							Shaft
Will-Burt	Night Scan XL 160	10	12/24	2	30,000	250	x	x							Shaft
F R C	Evolution	5	12/24	4	32,000	360	x	x							Shaft
Will-Burt	Night Scan XL 160	10	12/24	4	60,000	500	x	x	x	x	x	x	x	x	Shaft
Will-Burt	Night Scan XL 160	10	12/24	6	90,000	750			x	x	x	x	x	x	Shaft
Whelen	Pioneer Plus Flood	5	24	2	16,000	150	x	x							Shaft
Whelen	Pioneer Plus Flood/Flood	5	24	2	32,000	360			x	x	x	x	x	x	Shaft
F R C	Evolution	5	24	4	32,000	300	x	x							Shaft
Whelen	Pioneer Plus Flood	5	24	4	32,000	300	x	x							Shaft
F R C	Evolution	5	24	4	60,000	640			x	x	x	x	x	x	Shaft
F R C	Evolution	5	24	4	60,000	640			x	x	x	x	x	x	Shaft
Whelen	Pioneer Plus Flood/Flood	5	24	4	64,000	600	x	x	x	x	x	x	x	x	Shaft
Whelen	Pioneer Plus Flood/Flood	5	120	4	60,000	600	x	x	x	x					Shaft
Whelen	Pioneer Plus Spot/Flood	5	120	4	60,000	600	x	x	x	x	x	x	x	x	Shaft
F R C	SPECTRA Max	5	120	4	112,000	1300			x	x	x	x	x	x	Shaft
F R C	SPECTRA Max-S	5	120	4	112,000	1300			x	x	x	x	x	x	Shaft
Whelen	Pioneer Plus Flood/Flood	5	120	6	90,000	900			x	x	x	x	x	x	Shaft
Whelen	Pioneer Plus Spot/Flood	5	120	6	90,000	900			x	x	x	x	x	x	Shaft
F R C	SPECTRA	5	120	6	120,000	1380			x	x	x	x	x	x	Shaft
F R C	SPECTRA Max	5	120	6	168,000	1950			x	x	x	x	x	x	Shaft
F R C	SPECTRA Max-S	5	120	6	168,000	1950			x	x	x	x	x	x	Shaft
F R C	SPECTRA	5	240	4	80,000	920			x	x	x	x	x	x	Shaft
F R C	SPECTRA Max	5	240	4	112,000	1300			x	x	x	x	x	x	Shaft
F R C	SPECTRA Max-S	5	240	4	112,000	1300			x	x	x	x	x	x	Shaft
F R C	SPECTRA	5	240	6	120,000	1380			x	x	x	x	x	x	Shaft
F R C	SPECTRA Max	5	240	6	168,000	1950			x	x	x	x	x	x	Shaft
F R C	SPECTRA Max-S	5	240	6	168,000	1950			x	x	x	x	x	x	Shaft

CONTACT YOUR SALES REPRESENTATIVE TODAY

JOHN GLENN

Lighting Sales Manager

Mobile: 330.988.5911

jglenn@willburt.com

RYAN MAY

Regional Manager, Eastern US

Mobile: 330.347.7168

rmay@willburt.com

ARJUN SINGH

Regional Manager, Central US

Mobile: 330.347.3134

asingh@willburt.com

CUSTOMER SERVICE

ANDREW CAPOZELLA

Senior Customer Service Representative

Office: 330.684.5298

acapozella@willburt.com

SERVICE

STEVEN PINKLEY

Service Manager

Office: 330.684.4050

Mobile: 330.347.1059

spinkley@willburt.com

The Will-Burt Company (www.willburt.com), located in Orrville, Ohio, is the world's premier manufacturer of telescoping mast and tower elevation solutions – the world's one stop shop offering virtually every payload elevation solution from one source – for military, fire, cellular, broadcast, entertainment and other applications. Will-Burt also designs and manufactures military and other shelters made of all-composite materials that deliver higher performance at lower life cycle cost than metal or partial composite shelters. Will-Burt's LINX security solutions provide integrated access control and intrusion detection certified to protect critical assets. Will-Burt also offers a variety of manufacturing services backed by an ISO 9001:2008 certified quality system and a 14001:2004 environmental management system. Incorporated in 1918, Will-Burt is 100% employee-owned and is classified as a small business.



UNITED STATES

WORLD HEADQUARTERS

169 S. Main St., Orrville, Ohio USA 44667

Telephone: 330.682.7015

Mast Customer Service: 330.684.4000

Fax: 330.684.1190

Email: contact_us@willburt.com

INTEGRATED TOWER SYSTEMS

2703 Dawson Road, Tulsa, OK 74110

Telephone: 800.850.8535

Fax: 918.749.8537

Email: programs@itstowers.com

EUROPE

GEROH

A Will-Burt Company

Fischergasse 25

91344 Waischenfeld, Germany

Phone: +49-9202-18-0

Email: info@geroh.com

UNITED KINGDOM

UK SALES OFFICE

Unit P Morris Business Centre

Morris Farm, Old Holbrook

Horsham, West Sussex

RH12 4TW

United Kingdom

Phone: +44 (0) 1403 265532

Fax: +44 (0) 1403 259072

ASIA

SINGAPORE SALES OFFICE

1 Fullerton Road,

#02-01 One Fullerton,

Singapore 049213

Telephone: +65 6832 5689

Fax: +65 6722 0664