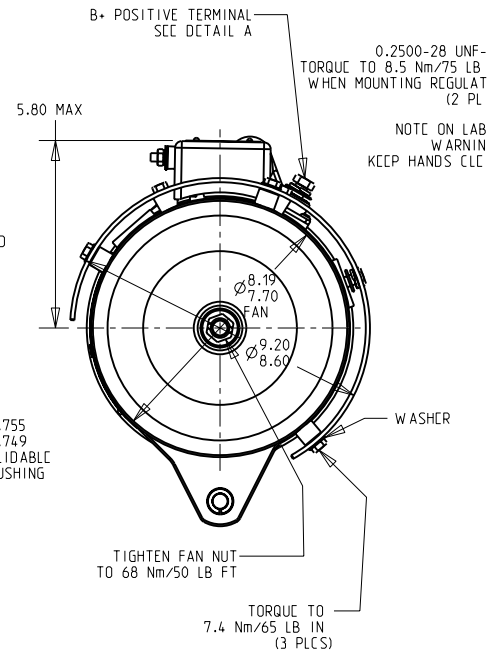
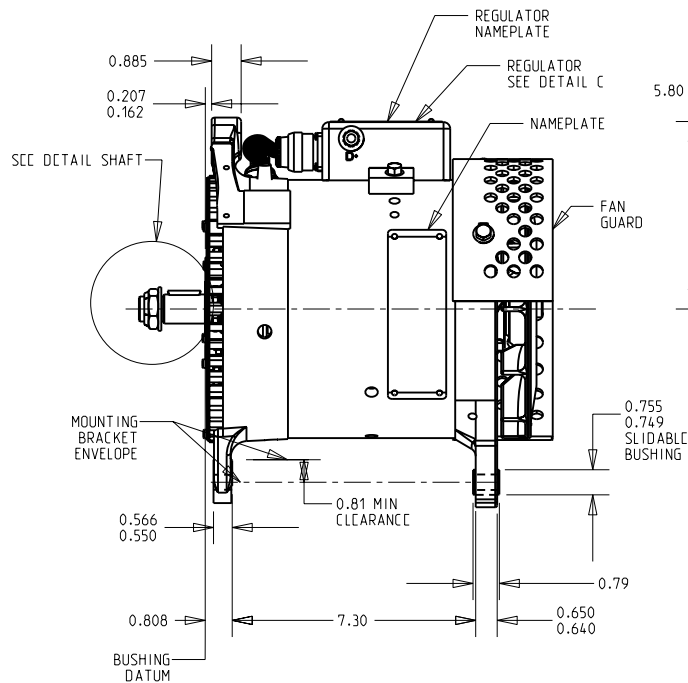
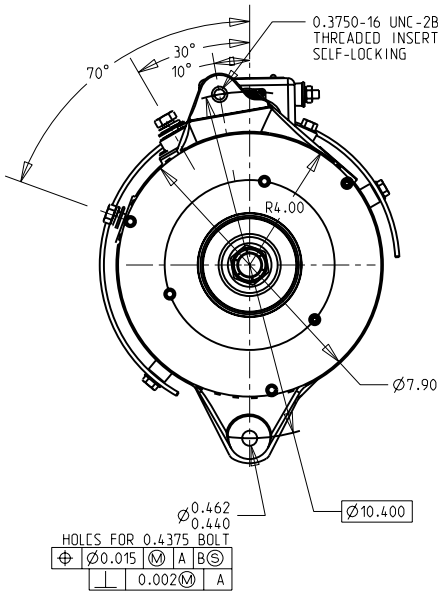




**C.E. Niehoff & Co.**  
BRUSHLESS ALTERNATORS

**N1245**  
**28V 260A**

**DESIGNING FOR TOMORROW'S DEMANDS**





**C.E. Niehoff & Co.**  
**BRUSHLESS ALTERNATORS**

**N1245**  
**28V 260A**

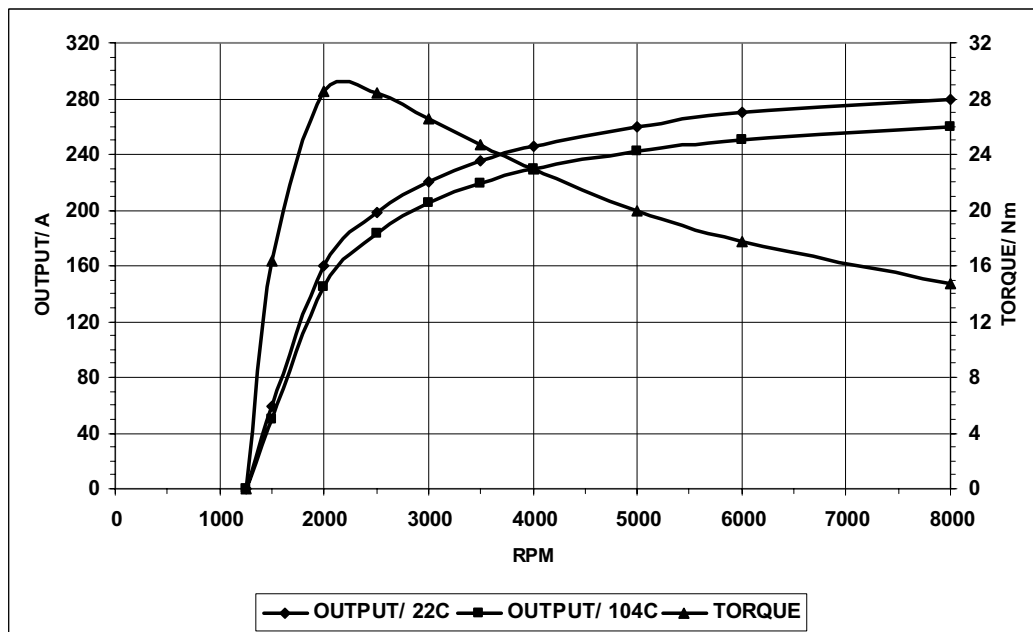
## **DESIGNING FOR TOMORROW'S DEMANDS**

**ALTERNATOR CHARACTERISTICS FOR 28 VOLTS/ 260 AMPS:**

**APPLICABLE MODELS: N1245**

**OUTPUT CURVE:** OUTPUT AMPERES VERSUS ALTERNATOR SHAFT SPEED IN RPM AT 28.0 VOLTS.

**TORQUE CURVE:** DRIVE TORQUE IN Nm VERSUS ALTERNATOR SHAFT SPEED IN RPM REQUIRED TO PRODUCE OUTPUT CURVE.



ALL MEASUREMENTS DEPICTED ON PERFORMANCE CURVES ARE TAKEN AT 22 °C/72°F AMBIENT TEMPERATURE (UNLESS OTHERWISE SPECIFIED) AND A STABILIZED MACHINE TEMPERATURE AT MAXIMUM OUTPUT WITH VOLTAGE CONSTANT AS SPECIFIED.

ABBREVIATIONS:

RPM            REVOLUTIONS PER MINUTE

Nm             NEWTON-METER

Conversion: 1 Nm = 8.85 Pound Inch (LBIN)



**C.E. Niehoff & Co.**  
**BRUSHLESS ALTERNATORS**

**N1245**  
**28V 260A**

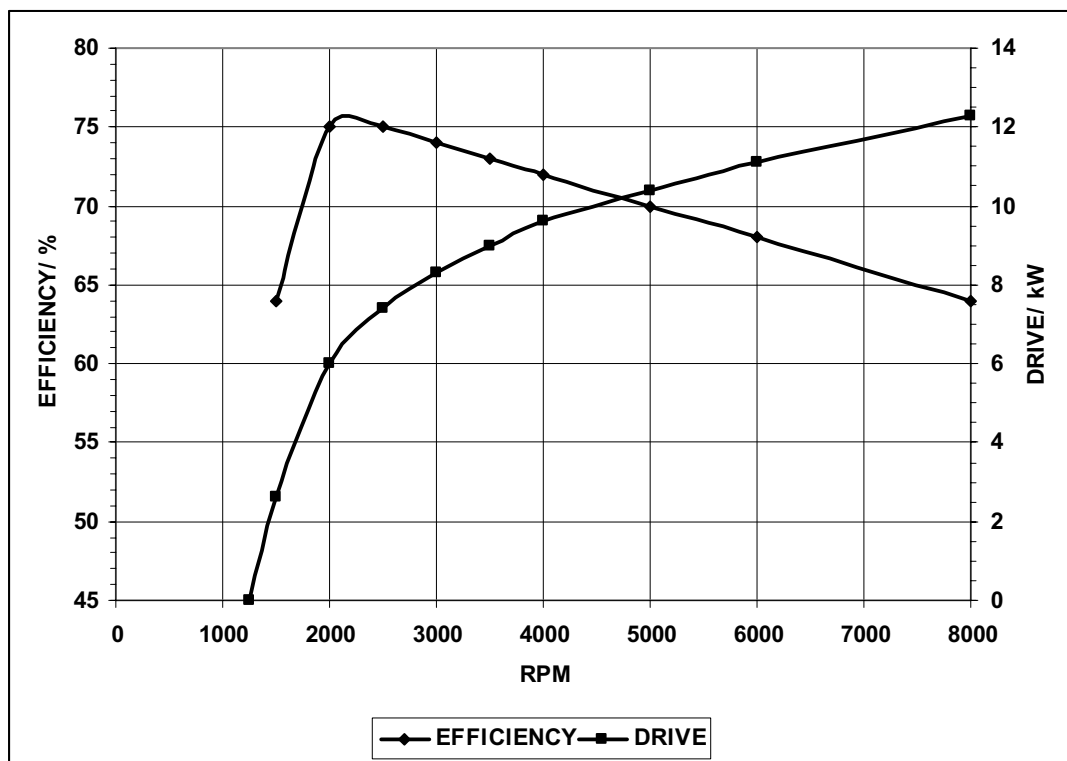
## **DESIGNING FOR TOMORROW'S DEMANDS**

**ALTERNATOR CHARACTERISTICS FOR 28 VOLTS/ 260 AMPS:**

**APPLICABLE MODELS: N1245**

**DRIVE CURVE:** DRIVE HORSEPOWER IN kW VERSUS ALTERNATOR SHAFT SPEED IN RPM  
REQUIRED TO PRODUCE OUTPUT CURVE.

**EFFICIENCY CURVE:** EFFICIENCY IN PERCENTAGE OF ALTERNATOR OUTPUT POWER  
DIVIDED BY INPUT POWER VERSUS ALTERNATOR SHAFT SPEED IN RPM REQUIRED TO  
PRODUCE OUTPUT CURVE



ABBREVIATIONS:

RPM REVOLUTIONS PER MINUTE

kW KILOWATTS (1000 WATTS)

Conversion: 1 kW = 1.341 horsepower (HP)



**C.E. Niehoff & Co.**  
**BRUSHLESS ALTERNATORS**

**N1245**  
**28V 260A**

## **DESIGNING FOR TOMORROW'S DEMANDS**

**ALTERNATOR CHARACTERISTICS FOR 28 VOLTS/ 260 AMPS:**

**APPLICABLE MODELS: N1245**

**SPECIFICATIONS:**

- 260 AMPERE 28 VOLTS NEGATIVE GROUND ALTERNATOR SYSTEM.
- BRUSHLESS 6 PHASE SELF-ENERGIZING AND SELF-RECTIFYING.
- USES EXTERNAL SOLID STATE VOLTAGE REGULATOR
- AMBIENT OPERATING TEMPERATURE: -54 °C/-65°F TO 104°C/220°F.
- BI-DIRECTIONAL ROTATION.
- SEALED BEARINGS: FRONT 306 BALL; REAR 203 BALL.
- UNIT WEIGHT 29.5 kg/ 65 LBS
- ROTOR INERTIA WITH FAN: 196 kg cm<sup>2</sup>/ 67 LB IN<sup>2</sup> (BY WEGHT)
- MAXIMUM SPEED 8000 RPM
- PEAK TORQUE AT 22 °C/72°F MACHINE TEMPERATURE IS 31.8 Nm AT 2200 RPM AND A 198 AMPERE LOAD AT 28.0 VOLTS.
- PEAK DRIVE REQUIREMENTS AT 22 °C/72°F MACHINE TEMPERATURE IS 13.0 kW AT 8000 RPM AND A 305 AMPERE LOAD AT 28.0 VOLTS.

**Headquarters**

C. E. Niehoff & Co.  
2021 Lee Street  
Evanston, IL 60202 USA  
Phone: 847/866-6030  
Fax: 847/492-1242  
E-mail: sales@CENiehoff.com

**European Office**

C. E. Niehoff & Co., Ltd.  
No. 7 Peregrine Place, Moss Side, Leyland,  
Preston PR25 3EY United Kingdom  
Phone: 44/1772-459777  
Fax: 44/1772-624666  
Email: info@Niehoff.co.uk



**C.E. Niehoff & Co.**  
**BRUSHLESS ALTERNATORS**

[www.CENiehoff.com](http://www.CENiehoff.com)