

# Polyformes

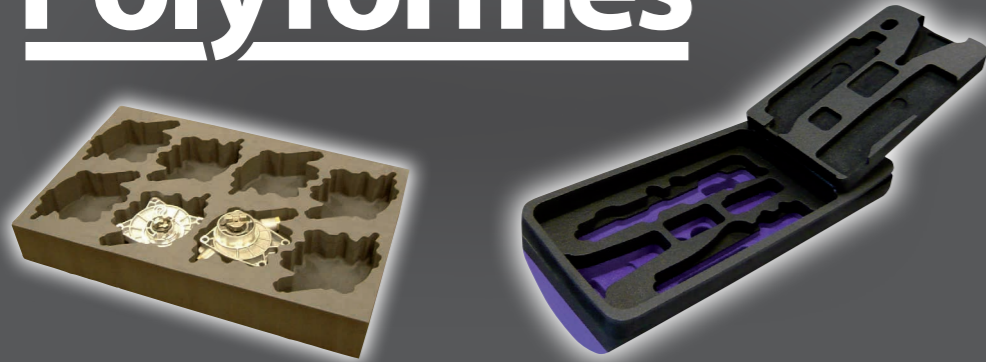
## Foam Specialists

Innovative solutions for  
foam products and packaging

Foam | Cases | Containers

Packaging | Protection | Promotion

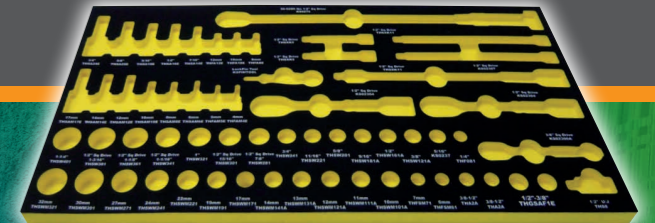
Think Foam. Think...  
**Polyformes**



UK and Europe's largest, most advanced  
and versatile flexible foam converter.

Kitting out | Line-side assembly

Returnable packaging | Tool control



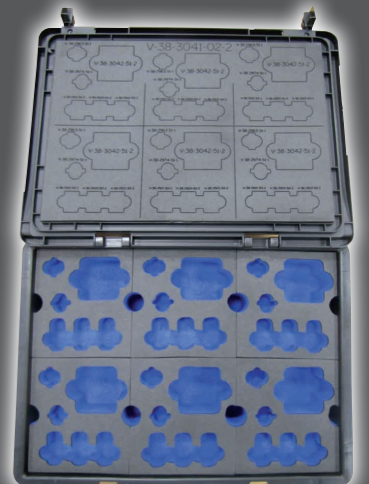
# Foam Engineering

[www.polyformes.co.uk](http://www.polyformes.co.uk)

For an instant response call : **01525 852 444**



- Returnable and re-usable packaging solutions are ideal cost-effective ways of shipping components and completed product.
- Clear assembly instructions ensure easy and correct build, optimise productivity and assist with stock control.
- In closed loop systems foam dunnage in plastic trays is lightweight thus lower transport costs are incurred.
- Custom produced foam inners offer protection for Class A surfaces and also protect against shock, vibration and impact.



Presentation | Protection | Promotion | Performance | Precision

# Think Foam. Think... **Polyformes**

Whatever equipment you need to carry, protect or display, bespoke foam inserts in a suitable container will provide the best protection available – and give added value to your products.



- Explorer Cases – rugged, waterproof, dustproof, shockproof. Full product protection in extreme and hazardous environments.



## Inserts & Cases

[www.polyformes.co.uk](http://www.polyformes.co.uk)

For an instant response call : **01525 852 444**



**Euro-containers | Instrumentation Cases | Presentation Cases**  
**Small Plastic Boxes | Flight Cases | Tote Trays**

- Plastic cases – off the shelf and available in a large range of colours and sizes.
- Flight cases – bespoke to customer requirement – any size, any quantity, light or heavy duty.
- Foam inserts – waterproof, durable, chemical and oil resistant, providing excellent impact protection and anti-scratch properties.
- Plastazote foam – ideal for housing and displaying products – available in a range of colours and hardnesses.



# Think Foam. Think... **Polyformes**

Sheets, cut pieces, discs – simple shapes can be quickly processed and supplied in any volume.

From 1.5mm thin up to 360mm thick and anything in-between. Also available in anti-static, flame retardant, conductive and metallocene soft touch.



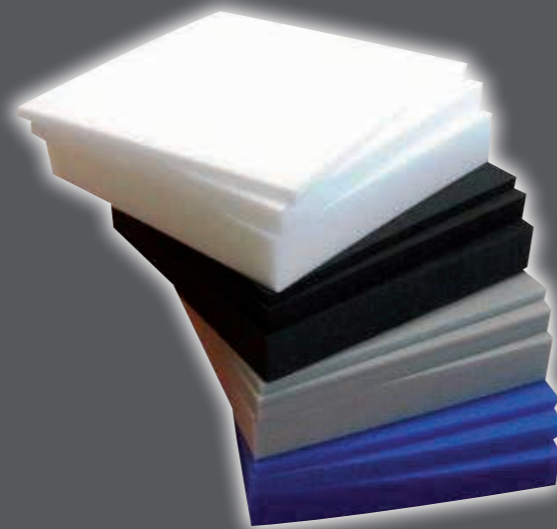
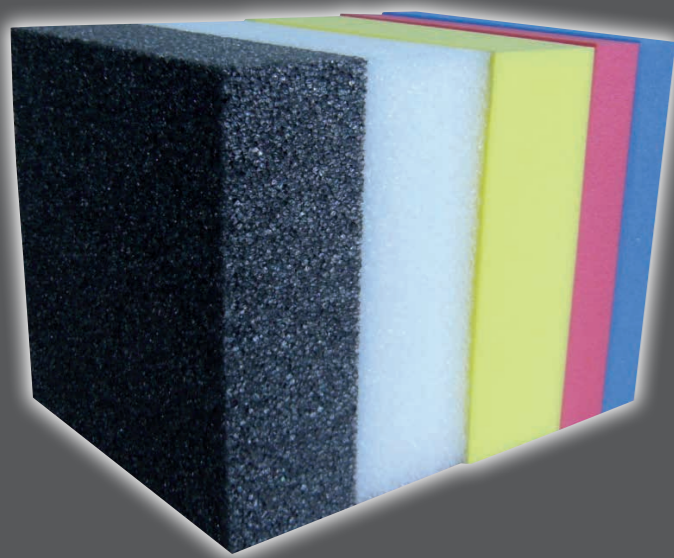
**2D & 3D shaping | Profiling | Thermoforming | Composite lamination | Water-jetting | High level component forming**

- In-house processing capabilities enable us to convert closed-cell foam into an infinite variety of shapes.

## Shapes & Sheets

[www.polyformes.co.uk](http://www.polyformes.co.uk)

For an instant response call : **01525 852 444**

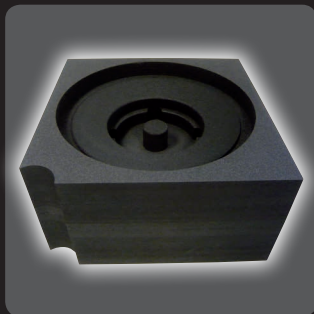


**Closed Cell Expanded Polyethylene Foams**

**Plastazote | Evazote | Ethafoam | Stratocell | Microlen**

- Products manufactured for all markets – aerospace, automotive, medical, marine, sports and leisure, packaging, promotion and design.
- High definition embossing and lasering – for identification, instructions, logos, company information.
- Full colour, full face imaging – any image or design on your foam product.
- Imageforme™ surface technology offers full colour designs and an extended product life.





# Think Foam. Think... **Polyformes**

**[www.polyformes.co.uk](http://www.polyformes.co.uk)**

e: [sales@polyformes.co.uk](mailto:sales@polyformes.co.uk)

For an instant response

call : **01525 852 444**

Polyformes Limited

Cherrycourt Way | Leighton Buzzard | Bedfordshire LU7 4UH

T: 01525 852444 | F: 01525 850484

