



**AntennaMast AM2  
with EZ Raze**



**AntennaMast AM2 Standard Deployment**  
Aluminum man-portable tripod mast



**AntennaMast AM2  
with Lift Winch**



**Hurry-Up Mast**  
Quick deploy mast -  
1 minute or less



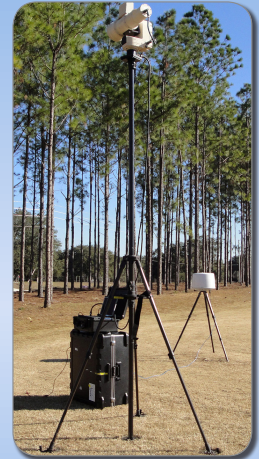
**QEAM HDTM**  
Lightweight, composite  
telescopic mast system



**QEAM**  
**Quick Erecting AntennaMast™**  
Lightweight, high strength field mast



**Ranger Mast™ and Ranger Pack®**  
Lightweight, back-packable tripod mast



# ELEVATION PLATFORM SOLUTIONS

A Solution for Every Mission





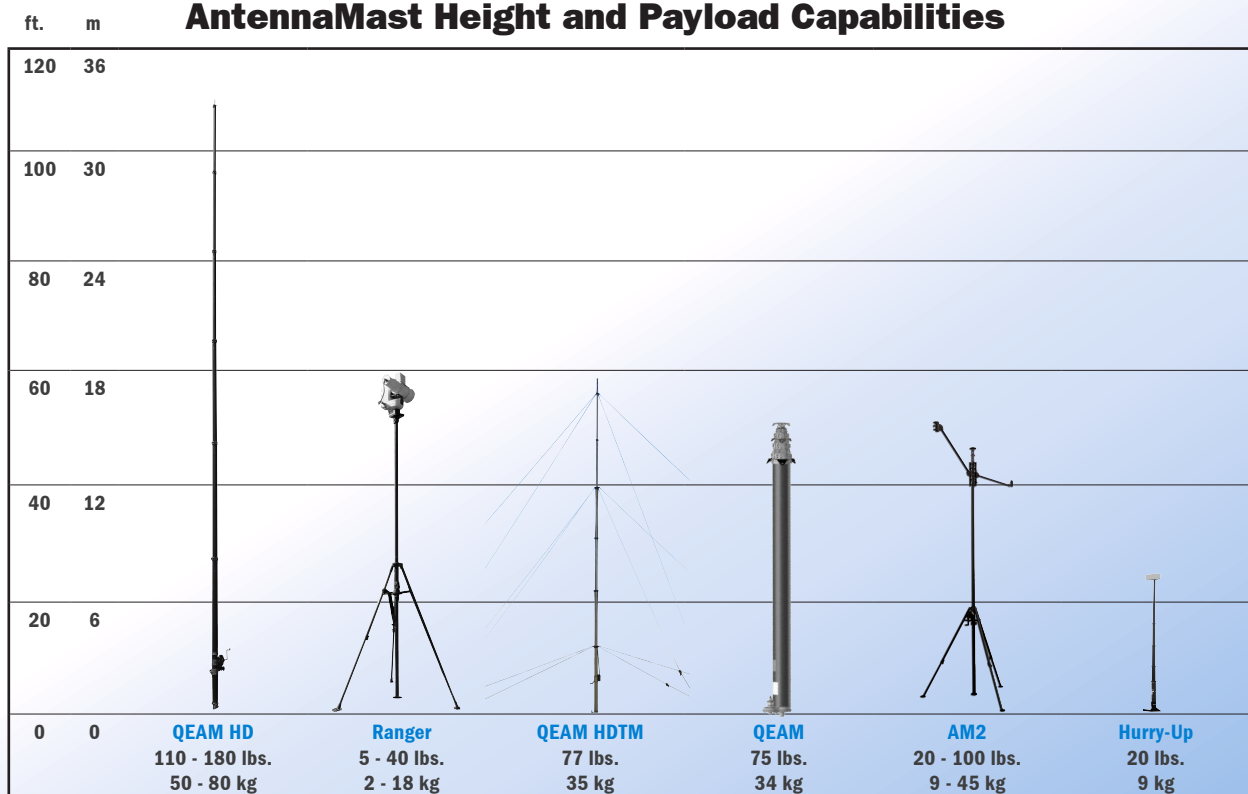
The AntennaMasts by Will-Burt provide our customers with extremely capable and flexible mast systems that are able to perform across a wide spectrum of mission profiles. We offer five unique mast variants that can be configured to meet all of your critical mission requirements. The Will-Burt Company has been manufacturing high performance mast systems for over 50 years. We have an in-house engineering and design team with unmatched capabilities supported by a certified ISO 9001:2015 quality management system. Our products are in use around the world in numerous industries and militaries and have secured a well-founded reputation for excellence.

## THE ADVANTAGES OF ANTENNAMAST



- **Versatile - A solution for every mission that will optimize payload performance.**
  - **QEAM Heavy Duty:** Delivers maximum height and payload capabilities from a robust field mast.
  - **QEAM:** Lightweight and high strength composite field mast.
  - **QEAM HDTM:** Lightweight and stable with quick deployment.
  - **Hurry-Up:** Full deployment in under 1 minute.
  - **Ranger:** Lightweight composite, back-packable tripod mast.
  - **AM2:** Man-portable, aluminum tripod mast.
- **Flexible - The same payload interface fits every mast system. Payload adaptors are available for common antennas and sensors. Will-Burt provides in-house design and manufacturing for custom requirements.**
- **Strong and Adaptable - Multiple sensors can be deployed on a single mast.**
- **Speed - Engineered for human factors to minimize set-up and tear down time. Payload adaptors interface without tools.**
- **Portable - Systems supplied with transport bags or back-packs and are ergonomically designed for easy and safe handling.**

### AntennaMast Height and Payload Capabilities



## TABLE OF CONTENTS



**AM2**  
**MAN-PORTABLE ALUMINUM**  
**TRIPOD MAST**  
**UP TO 15 M / 49 FT. .... 4-5**



**QEAM HEAVY DUTY**  
**MAXIMUM HEIGHT AND**  
**PAYLOAD FIELD MAST**  
**UP TO 34 M / 112 FT. .... 9**



**RANGER**  
**LIGHTWEIGHT COMPOSITE,**  
**BACK-PACKABLE**  
**TRIPOD MAST UP TO**  
**18.3 M / 60 FT. .... 6-7**



**QEAM HDTM**  
**STRAP DRIVEN FIELD MAST**  
**UP TO 18 M / 60 FT. .... 10**



**QEAM**  
**LIGHTWEIGHT AND HIGH**  
**STRENGTH COMPOSITE MAST**  
**UP TO 15 M / 49 FT. .... 8**



**HURRY-UP**  
**RAPID DEPLOY FIELD MAST**  
**UP TO 7.5 M / 25 FT. .... 11**



**AM2™**



**AM2™ with EZ Raze™**



**QEAM™ Heavy Duty**

## AM2

The AntennaMast model AM2 is a rugged, lightweight, man-portable, aluminum tripod mast designed for rapid payload deployment. The AM2 is extremely flexible and reliable and is capable of elevating multiple devices on a single mast.

### Payload deployment options:

1. The EZ Raze™ system with cable winching device and safety brake enables the user to lift and lower heavier payloads in a safe and controlled manner without disassembling the mast system.
2. The mast tube lift winch provides a mechanical assist for the lifting of the mast tubes for heavier payloads.
3. The user is also able to elevate the mast tubes and payload by breach loading the tubes through the tripod center collar.



**AM2 with EZ Raze  
Payload Elevation System**

**Easily elevate and lower multiple  
antennas and sensors**



**AM2 with Mast Tube Lift Winch**

### Key Features

- **Rapid set-up** – Includes a tripod with two (2) built-in levels and large no-slip adjustment knobs that are easy to operate. Interlocking mast tubes allow for directional adjustment of the payload.
- **Flexible** – A variety of payload adaptors and accessories are available to accomplish diverse missions.
- **Simple** – No tools or special training are needed for deployment.
- **Rugged** – Designed to meet MIL-STD-810 for use in a variety of harsh environments.
- **Durable** – Components are constructed of aluminum and stainless steel and are covered by a two (2) year warranty.
- **Complete system** – AM2 system includes all components needed to safely deploy rated payload at selected height.
- **Transportable** – Every mast system comes with a rugged wheeled transport bag designed for easy unloading and loading.

## AM2 Specifications

Height (m / ft.)	Model #	Deployable Load (kg / lb.)	Deployment Method	Deployment Time	System Weight (kg / lb.)	Guying (Primary / Secondary)	Wind Survival Speed (km/h / mph)
15 / 49.2	715061500	9.1 / 20	Manual	20-30 (2-4 persons)	47 / 103.6	Top / Mid Guying Optional	113 / 70 @ 4 sq. ft.
14 / 45.9	715061400	11.3 / 25	Manual	15-20 (1-3 persons)	45.6 / 100.5	Top / Mid Guying Optional	113 / 70 @ 4 sq. ft.
13 / 42.7	715061300	13.6 / 30	Manual	15-20 (1-3 persons)	44 / 97	Top / Mid Guying Optional	113 / 70 @ 4 sq. ft.
12 / 39.4	715061200	15.9 / 35	Manual	15-20 (1-3 persons)	42.5 / 93.8	Top / Mid Guying Optional	113 / 70 @ 4 sq. ft.
11 / 36.1	715061100	18.1 / 40	Manual	15-20 (1-3 persons)	41.1 / 90.5	Top / Mid Guying Optional	113 / 70 @ 4 sq. ft.
10 / 32.8	715061000	22.7 / 50	Manual	15-18 (1-3 persons)	39.6 / 87.3	Top / Mid Guying Optional	113 / 70 @ 6 sq. ft.
9 / 29.5	715060900	24.9 / 55	Manual	15-18 (1-3 persons)	38.1 / 84	Top	113 / 70 @ 6 sq. ft.
8 / 26.2	715060800	24.9 / 55	Manual	15-18 (1-3 persons)	36.7 / 80.8	Top	113 / 70 @ 6 sq. ft.
7 / 23	715060700	27.2 / 60	Manual	10-18 (1-2 persons)	35.2 / 77.6	Top	113 / 70 @ 6 sq. ft.
6 / 19.7	715060600	27.2 / 60	Manual	10-18 (1-2 persons)	33.7 / 74.3	Top	113 / 70 @ 6 sq. ft.
5 / 16.4	715060500	29.5 / 65	Manual	5-10 (1-2 persons)	32.2 / 71	Top	113 / 70 @ 6 sq. ft.
4 / 13.1	715060400	34 / 70	Manual	5-10 (1-2 persons)	30.8 / 67.8	Top	113 / 70 @ 6 sq. ft.
3 / 9.8	715060300	38.6 / 85	Manual	5-10 (1-2 persons)	29.3 / 64.6	Top	113 / 70 @ 6 sq. ft.
2 / 6.6	715060200	45.4 / 100	Manual	5-10 (1-2 persons)	27.8 / 61.3	Top	113 / 70 @ 6 sq. ft.

## AM2 with Mast Tube Lift Winch Specifications

Height (m / ft.)	Model #	Deployable Load (kg / lb.)	Deployment Method	Deployment Time	System Weight (kg / lb.)	Guying (Primary / Secondary)	Wind Survival Speed (km/h / mph)
15 / 49.2	715071500	9.1 / 20	Lift Winch	20-30 (2-4 persons)	50.2 / 110.6	Top / Mid Guying Optional	113 / 70 @ 4 sq. ft.
14 / 45.9	715071400	11.3 / 25	Lift Winch	15-20 (1-3 persons)	48.8 / 107.5	Top / Mid Guying Optional	113 / 70 @ 4 sq. ft.
13 / 42.7	715071300	13.6 / 30	Lift Winch	15-20 (1-3 persons)	47.4 / 104.5	Top / Mid Guying Optional	113 / 70 @ 4 sq. ft.
12 / 39.4	715071200	15.9 / 35	Lift Winch	15-20 (1-3 persons)	45.7 / 100.8	Top / Mid Guying Optional	113 / 70 @ 4 sq. ft.
11 / 36.1	715071100	18.1 / 40	Lift Winch	15-20 (1-3 persons)	44.2 / 97.5	Top / Mid Guying Optional	113 / 70 @ 4 sq. ft.
10 / 32.8	715071000	22.7 / 50	Lift Winch	15-18 (1-3 persons)	42.8 / 94.3	Top / Mid Guying Optional	113 / 70 @ 6 sq. ft.
9 / 29.5	715070900	24.9 / 55	Lift Winch	15-18 (1-3 persons)	41.3 / 91	Top	113 / 70 @ 6 sq. ft.
8 / 26.2	715070800	24.9 / 55	Lift Winch	15-18 (1-3 persons)	39.8 / 87.8	Top	113 / 70 @ 6 sq. ft.
7 / 23	715070700	27.2 / 60	Lift Winch	10-18 (1-2 persons)	38.4 / 84.6	Top	113 / 70 @ 6 sq. ft.
6 / 19.7	715070600	27.2 / 60	Lift Winch	10-18 (1-2 persons)	36.9 / 81.3	Top	113 / 70 @ 6 sq. ft.
5 / 16.4	715070500	29.5 / 65	Lift Winch	5-10 (1-2 persons)	35.4 / 78	Top	113 / 70 @ 6 sq. ft.
4 / 13.1	715070400	34 / 75	Lift Winch	5-10 (1-2 persons)	33.9 / 74.8	Top	113 / 70 @ 6 sq. ft.
3 / 9.8	715070300	38.6 / 85	Lift Winch	5-10 (1-2 persons)	32.5 / 71.6	Top	113 / 70 @ 6 sq. ft.
2 / 6.6	715070200	45.4 / 100	Lift Winch	5-10 (1-2 persons)	31 / 68.3	Top	113 / 70 @ 6 sq. ft.

## AM2 with EZ Raze Payload Elevation System Specifications

Height (m / ft.)	Model #	Deployable Load (kg / lb.)	Deployment Method	Deployment Time	System Weight (kg / lb.)	Guying (Primary / Secondary)	Wind Survival (km/h / mph)
15 / 49.2	715191500	22.7 / 50	Carriage	20-30 (2-4 persons)	52.4 / 115.6	Top	113 / 70 @ 1 sq. ft.
14 / 45.9	715191400	24.9 / 55	Carriage	15-18 (1-3 persons)	51 / 112.5	Top	113 / 70 @ 2 sq. ft.
13 / 42.7	715191300	27.2 / 60	Carriage	15-18 (1-3 persons)	49.5 / 109.1	Top	113 / 70 @ 3 sq. ft.
12 / 39.4	715191200	29.5 / 65	Carriage	15-18 (1-3 persons)	48 / 105.9	Top	113 / 70 @ 4 sq. ft.
11 / 36.1	715191100	31.8 / 70	Carriage	15-18 (1-3 persons)	46.5 / 102.6	Top	113 / 70 @ 4 sq. ft.
10 / 32.8	715191000	34 / 75	Carriage	15-18 (1-3 persons)	45.1 / 99.4	Top	113 / 70 @ 6 sq. ft.
9 / 29.5	715190900	34 / 75	Carriage	15-18 (1-3 persons)	43.6 / 96.1	Top	113 / 70 @ 6 sq. ft.
8 / 26.2	715190800	34 / 75	Carriage	15-18 (1-3 persons)	42.1 / 92.9	Top	113 / 70 @ 6 sq. ft.
7 / 23	715190700	34 / 75	Carriage	10-18 (1-2 persons)	40.6 / 89.6	Top	113 / 70 @ 6 sq. ft.
6 / 19.7	715190600	34 / 75	Carriage	10-18 (1-2 persons)	39.2 / 86.4	Top	113 / 70 @ 6 sq. ft.
5 / 16.4	715190500	34 / 75	Carriage	5-10 (1-2 persons)	37.7 / 83.1	Top	113 / 70 @ 6 sq. ft.
4 / 13.1	715190400	34 / 75	Carriage	5-10 (1-2 persons)	36.2 / 79.9	Top	113 / 70 @ 6 sq. ft.
3 / 9.8	715190300	34 / 75	Carriage	5-10 (1-2 persons)	34.7 / 76.6	Top	113 / 70 @ 6 sq. ft.

## Ranger and Ranger Pack

The Ranger and Ranger Pack are the lightest man-portable tripod masts available. Constructed of lightweight, high strength carbon composites, these tripod masts deliver the benefits of faster deployment while still delivering the strength and height of metal masts. These masts are the ideal elevation solution for missions requiring fast deployment of surveillance sensors.



Ranger Mast



### Flexible deployment options:

1. Ranger Pack is a backpack mast system that stows in one organized and rugged pack.
2. The EZ Raze™ payload elevation system with safety brake allows antennas and sensors to safely move from the top of the deployed mast system to ground level by turning a winch.
3. Manual mast tube and payload deployment by pushing tubes through tripod center.



Ranger Pack



### Key Features

- **Quick set-up** – Includes a composite tripod with two (2) built-in levels and lever operated friction locks that are easy to operate with gloved hands. Interlocking composite mast tubes deliver fast assembly and tear-down.
- **Flexible** – A variety of payload adaptors and elevation accessories are available to accomplish diverse missions.
- **Ease of use** – No tools or special training needed for deployment.
- **Durable** – Components are constructed of carbon composite and stainless steel and are covered by a two (2) year warranty.
- **Complete system** – Ranger and Ranger Pack systems include all components needed to safely deploy rated payload at selected height.
- **Transportable** – Rugged wheeled transport bag included with Ranger and back-pack included with Ranger Pack.

## Ranger Pack Specifications

Height (m / ft.)	Model #	Deployable Load (kg / lb.)	Deployment Method	Deployment Time	System Weight (kg / lb.)	Guying (Primary / Secondary)	Wind Survival (km/h / mph)
7.3 / 24	714042410	22.7 / 50	Manual	10-18 (1-2 persons)	28.6 / 63	Top	113 / 70 @ 4 sq. ft.

## Ranger Mast Specifications

Height (m / ft.)	Model #	Deployable Load (kg / lb.)	Deployment Method	Deployment Time	System Weight (kg / lb.)	Guying (Primary / Secondary)	Wind Survival (km/h / mph)
18.3 / 60	714076000	2.3 / 5	Manual	20-30 (2-4 persons)	40.8 / 90	Top / Mid Guying Optional	113 / 70 @ 2 sq. ft.
17.1 / 56	714075600	2.3 / 5	Manual	20-30 (2-4 persons)	39.5 / 87	Top / Mid Guying Optional	113 / 70 @ 2 sq. ft.
15.8 / 52	714075200	4.5 / 10	Manual	15-20 (1-3 persons)	38.1 / 84	Top / Mid Guying Optional	113 / 70 @ 2 sq. ft.
14.6 / 48	714074800	4.5 / 10	Manual	15-20 (1-3 persons)	37.2 / 82	Top / Mid Guying Optional	113 / 70 @ 2 sq. ft.
13.4 / 44	714074400	6.8 / 15	Manual	15-20 (1-3 persons)	35.8 / 79	Top / Mid Guying Optional	113 / 70 @ 2 sq. ft.
12.2 / 40	714074000	9.1 / 20	Manual	15-18 (1-3 persons)	33.1 / 73	Top / Mid Guying Optional	113 / 70 @ 2 sq. ft.
11 / 36	714073600	11.3 / 25	Manual	15-18 (1-3 persons)	31.8 / 70	Top / Mid Guying Optional	113 / 70 @ 2 sq. ft.
9.8 / 32	714073200	13.6 / 30	Manual	15-18 (1-3 persons)	30.8 / 68	Top	113 / 70 @ 4 sq. ft.
8.5 / 28	714072800	15.9 / 35	Manual	10-18 (1-2 persons)	29.5 / 65	Top	113 / 70 @ 4 sq. ft.
7.3 / 24	714072400	18.1 / 40	Manual	10-18 (1-2 persons)	28.6 / 63	Top	113 / 70 @ 4 sq. ft.
6.1 / 20	714072000	18.1 / 40	Manual	5-10 (1-2 persons)	27.2 / 60	Top	113 / 70 @ 4 sq. ft.
4.9 / 16	714071600	18.1 / 40	Manual	5-10 (1-2 persons)	26.3 / 58	Top	113 / 70 @ 4 sq. ft.
3.7 / 12	714071200	18.1 / 40	Manual	5-10 (1-2 persons)	25.4 / 56	Top	113 / 70 @ 4 sq. ft.

## Ranger Mast with EZ Raze Payload Elevation System Specifications

Height (m / ft.)	Model #	Deployable Load (kg / lb.)	Deployment Method	Deployment Time	System Weight (kg / lb.)	Guying (Primary / Secondary)	Wind Survival (km/h / mph)
18.3 / 60	714176000	13.6 / 30	Carriage	20-30 (2-4 persons)	52.2 / 115	Top	80 / 50 @ 1 sq. ft.
17.1 / 56	714175600	15.9 / 35	Carriage	20-30 (2-4 persons)	51.3 / 113	Top	96 / 60 @ 1 sq. ft.
15.8 / 52	714175200	15.9 / 35	Carriage	15-20 (1-3 persons)	49.9 / 110	Top	96 / 60 @ 1.5 sq. ft.
14.6 / 48	714174800	18.1 / 40	Carriage	15-20 (1-3 persons)	49 / 108	Top	113 / 70 @ 1.5 sq. ft.
13.4 / 44	714174400	18.1 / 40	Carriage	15-20 (1-3 persons)	47.6 / 105	Top	113 / 70 @ 2 sq. ft.
12.2 / 40	714174000	18.1 / 40	Carriage	15-18 (1-3 persons)	44.9 / 99	Top	113 / 70 @ 3 sq. ft.
11 / 36	714173600	18.1 / 40	Carriage	15-18 (1-3 persons)	43.5 / 96	Top	113 / 70 @ 4 sq. ft.
9.8 / 32	714173200	18.1 / 40	Carriage	15-18 (1-3 persons)	42.6 / 94	Top	113 / 70 @ 4 sq. ft.
8.5 / 28	714172800	18.1 / 40	Carriage	10-18 (1-2 persons)	41.3 / 91	Top	113 / 70 @ 4 sq. ft.
7.3 / 24	714172400	18.1 / 40	Carriage	10-18 (1-2 persons)	40.4 / 89	Top	113 / 70 @ 4 sq. ft.
6.1 / 20	714172000	18.1 / 40	Carriage	5-10 (1-2 persons)	39 / 86	Top	113 / 70 @ 4 sq. ft.
4.9 / 16	714171600	18.1 / 40	Carriage	5-10 (1-2 persons)	38.1 / 84	Top	113 / 70 @ 4 sq. ft.
3.7 / 12	714071200	18.1 / 40	Carriage	5-10 (1-2 persons)	37.2 / 82	Top	113 / 70 @ 4 sq. ft.



A full range of accessories and payload adaptors are available for the Ranger Mast.



**EZ-RAZE**



**DUAL, TRI & QUAD ARM COLLAR**



**NATO PLATE**



**BOLSTER PLATE**

# Q★E★A★M

QUICK ERECTING ANTENNA MAST

The Quick Erecting Antenna Mast (QEAM) is a lightweight, high strength carbon composite or aluminum field mast that offers a rigid, stable platform for elevating payloads. The QEAM may be field, vehicle, or shelter mounted. The QEAM is deployed using a robust crank and aluminum alloy screw mechanism. The QEAM is MIL-STD-810F certified for harsh environmental conditions and is widely used throughout the world.



## Delivers precise pointing accuracy:

- **Twist is minimized by full-length external keys**
- **Rigid mast tubes reduce deflection**

## Key Features

- **Position payload at any height** – Automatic locking collars safely maintain elevation.
- **Pointing accuracy is assured with full-length keys.**
- **Maintenance-free** – Sealed crank mechanism requires no grease.
- **Flexible** – A variety of payload adaptors and elevation accessories are available.
- **Rugged** – Carbon composite or aluminum mast tubes and aluminum and stainless steel components are covered by a two (2) year warranty.
- **Complete system** – Includes all components needed to safely deploy rated payload.

QEAM	TM 10 (Aluminum)	TM 10C (Carbon Fiber Tubes)	TM 15C (Carbon Fiber Tubes)
Nested Height	2.4 m / 8 ft.	2.4 m / 8 ft.	2.4 m / 8 ft.
Extended Height	10 m / 32.8 ft.	10 m / 32.8 ft.	15 m / 50 ft.
Guying	2 level / 3 way	2 level / 3 way	3 level / 4 way
Number of Sections	5	5	8
Weight (Mast Only)	19 kg / 42 lb.	25 kg / 55 lb.	43.1 kg / 95 lb.
Weight (Accessory Kit)	24 kg / 52 lb.	2 @ 19 kg / 42 lb. each	2 @ 19 kg / 42 lb. each
Payload Capacity	7 kg / 15 lb.	34 kg / 75 lb.	34 kg / 75 lb.
Maximum Sail Area	0.6msq / 6 sq. ft. CD=1.5	0.6msq / 6 sq. ft. CD=1.5	0.6msq / 6 sq. ft. CD=1.5
Ice load	12 mm / 0.5 in.	12 mm / 0.5 in.	12 mm / 0.5 in.
Maximum Erection Wind*	40 km/h / 25 mph	40 km/h / 25 mph	40 km/h / 25 mph
Operational Wind Speed	97 km/h / 60 mph	97 km/h / 60 mph	97 km/h / 60 mph
Survival Wind	128 km/h / 80 mph	128 km/h / 80 mph	128 km/h / 80 mph
Surface Mounting	±15° slope	±15° slope	±15° slope
Deployment Time	2 persons, 7.5 min	2 persons, 8 min	3 persons, 10 min
Drive System	Screw Drive	Screw Drive	Screw Drive
Finish	CARC Green	Standard Black	Standard Black

\* Note: Must be guyed for wind speeds over 40 km/h / 25 mph.



# Q★E★A★M

QUICK ERECTING ANTENNA MAST

## HEAVY DUTY



The Quick Erecting Antenna Mast Heavy Duty (QEAM HD) is a high capacity field mast that uses a strap drive mechanism to extend the mast. The QEAM HD may be field, vehicle, trailer or shelter mounted. This mast is well-suited for heavy payloads and payloads with larger sail areas. This mast has been MIL-STD-810F certified for harsh environmental conditions.

### Key Features

- **Position payload at any height** – Automatic locking collars safely maintain elevation.
- **Pointing accuracy is assured with full-length keys.**
- **Strap drive system is strong and reliable and requires no external power.**
- **Flexible** – A variety of payload adaptors and elevation accessories are available.
- **Rugged** – Black anodized aluminum mast tubes and aluminum and stainless steel components are covered by a two (2) year warranty.
- **Complete system** – Includes all components needed to safely deploy rated payload.

### High capacity manually deployed mast:

- **Easy to operate** – no power required for deployment
- **Reaches heights up to 34 m / 112 ft.**
- **Payload capacity up to 80 kg / 180 lb.**

Aluminum Strap Drive Model	TM 21	TM 25	TM 30	TM 34
Nested Height	4.45 m / 14.6 ft.	4.5 m / 14.8 ft.	5.9 m / 19.3 ft.	5.8 m / 19 ft.
Extended Height	21 m / 68.9 ft.	25 m / 82 ft.	30 m / 98.4 ft.	34 m / 112 ft.
Guying	4 level / 4 way	5 level / 4 way	5 level / 4 way	5 level / 4 way
Number of Sections	6	7	6	7
Weight (Mast Only)	90 kg / 197 lb.	100 kg / 220 lb.	114 kg / 250 lb.	121 kg / 265 lb.
Weight (Accessory Kit)	111 kg / 245 lb.	125 kg / 275 lb.	125 kg / 275 lb.	125 kg / 275 lb.
Payload Capacity	80 kg / 180 lb.	68 kg / 150 lb.	68 kg / 150 lb.	50 kg / 110 lb.
Maximum Sail Area	0.6msq / 6 sq. ft. CD=1.5	0.6msq / 6 sq. ft. CD=1.5	0.6msq / 6 sq. ft. CD=1.5	0.6msq / 6 sq. ft. CD=1.5
Ice load	12 mm / 0.5 in.	12 mm / 0.5 in.	12 mm / 0.5 in.	12 mm / 0.5 in.
Maximum Erection Wind*	40 km/h / 25 mph	40 km/h / 25 mph	40 km/h / 25 mph	40 km/h / 25 mph
Operational Wind	97 km/h / 60 mph	97 km/h / 60 mph	97 km/h / 60 mph	97 km/h / 60 mph
Survival Wind	128 km/h / 80 mph	128 km/h / 80 mph	128 km/h / 80 mph	128 km/h / 80 mph
Surface Mounting	±15° slope	±15° slope	±15° slope	±15° slope
Deployment Time	3 persons, 25 min	3 persons, 30 min	3 persons, 30 min	3 persons, 30 min
Drive System	Strap Drive	Strap Drive	Strap Drive	Strap Drive
Finish	MIL-A-8625 Type II, CL 2 Black	MIL-A-8625 Type II, CL 2 Black	MIL-A-8625 Type II, CL 2 Black	MIL-A-8625 Type II, CL 2 Black

\* Note: Must be guyed for wind speeds over 40 km/h / 25 mph.

COMMUNICATIONS

# Q★E★A★M

QUICK ERECTING ANTENNA MAST

# H D T M

The QEAM HDTM is a lightweight composite strap-driven field mast ideally suited for antennas and other payloads that require stable elevation from 8 to 18 meters. Four vertical built-in keys minimize mast twist which ensures pointing accuracy. QEAM HDTM can be quickly deployed in the field with color coded guy lines and simple to operate hand-operated winch with automatic safety brake. Mobile mounting on vehicles and trailers is possible with optional mobile mounting kit.

The QEAM HDTM meets the environmental requirements of MIL-STD-810 and will exceed the requirements of the mission.

## HDTM MODELS

- **Lightweight Telescopic Mast System**  
Composite mast sections  
Stable with high degree of elasticity
- **Minimal payload twist**  
Four keyways per mast section
- **Fast and safe deployment**  
Hand-operated lift winch with automatic safety brake  
Color coded guy lines
- **Position payload at any height**  
Winch locks mast in place
- **Complete Elevation System**  
Includes all items needed to deploy
- **Meets MIL-STD-810 Environmental**



QEAM HDTM	105-8HDTM2.0	105-10HDTM2.3	105-12HDTM2.7	105-15HDTM3.2	128-8HDTM2.0	128-10HDTM2.3	128-12HDTM2.7	128-15HDTM3.2	128-18HDTM3.7
System Height (ft. / m)	26.25 / 8	32.8 / 10	39.37 / 12	49.21 / 15	26.25 / 8	32.8 / 10	39.37 / 12	49.21 / 15	59.06 / 18
Mast Height (ft. / m)	24.61 / 7.5	31.17 / 9.5	37.73 / 11.5	47.57 / 14.5	24.61 / 7.5	31.17 / 9.5	37.73 / 11.5	47.57 / 14.5	57.42 / 17.5
Retracted Length (ft. / m)	6.56 / 2.0	7.55 / 2.3	8.86 / 2.7	10.5 / 3.2	6.56 / 2.0	7.55 / 2.3	8.86 / 2.7	10.5 / 3.2	12.14 / 3.7
Bottom Section Diameter (in. / mm)	4.13 / 105	4.13 / 105	4.13 / 105	4.13 / 105	5.04 / 128	5.04 / 128	5.04 / 128	5.04 / 128	5.04 / 128
Top Section Diameter (in. / mm)	1.97 / 50	1.97 / 50	1.97 / 50	1.97 / 50	2.82 / 71.5	2.82 / 71.5	2.82 / 71.5	2.82 / 71.5	2.82 / 71.5
Extension Tube Length (in. / mm)	19.69 / 500	19.69 / 500	19.69 / 500	19.69 / 500	19.69 / 500	19.69 / 500	19.69 / 500	19.69 / 500	19.69 / 500
Maximum Vertical Top Load (lb / kg)	55.12 / 25	55.12 / 25	55.12 / 25	55.12 / 25	77.16 / 35	77.16 / 35	77.16 / 35	66.14 / 30	66.14 / 30
Maximum Wind Area	0.5	0.35	0.4	0.35	0.8	0.7	0.8	0.8	0.6
Maximum Horizontal Top Load (N)	360	250	287	250	570	500	570	570	430
Maximum Operational Wind Speed (mph / km/h)	74.57 / 120	74.57 / 120	74.57 / 120	74.57 / 120	74.57 / 120	74.57 / 120	74.57 / 120	74.57 / 120	74.57 / 120
Maximum Survival Wind Speed (mph / km/h)	99.42 / 160	99.42 / 160	99.42 / 160	99.42 / 160	99.42 / 160	99.42 / 160	99.42 / 160	99.42 / 160	99.42 / 160
Guy Radius (m)	7	7	8-10	10-12	7	7	8-10	10-12	10-12
Number of Guys x Levels	4 x 2	4 x 2	4 x 3	4 x 3	4 x 2	4 x 2	4 x 3	4 x 3	4 x 3
Number of Sections	6	6	6	6	6	6	6	6	6
Mast Weight (lb / kg)	45.2 / 20.5	47.4 / 21.5	50.71 / 23	55.12 / 25	54.01 / 24.5	58.43 / 26.5	63.93 / 29	77.16 / 35	91.5 / 41.5
Accessories Weight (lb / kg)	52.91 / 24	52.91 / 24	72.75 / 33	77.16 / 35	60.63 / 27.5	60.63 / 27.5	80.47 / 36.5	97 / 44	97 / 44

## Hurry-Up Mast

The Hurry-Up Mast is a lightweight push-up field mast that can be deployed in less than one minute. The quick lock / release collars will maintain mast height indefinitely. The Hurry-Up is ideal for deploying antennas and sensors in a highly mobile operating environment. This mast requires no guy lines and is available with an optional vehicle drive-on plate for even faster deployment.



### Key Features

- Durable mast made of black anodized aluminum with stainless steel locking collars.
- Portable and lightweight makes it suitable for both field deployment and vehicle mounting.
- Suitable for a variety of antennas and other payloads with a wide range of available accessories.

Hurry-Up Mast	710103010	903614	719901610	719900790
Extended Height	9 m / 30 ft.	7.6 m / 24.3 ft.	5.3 m / 16.4 ft.	3.5 m / 7 ft.
Nested Height	2 m / 6 ft. 9 in.	1.8 m / 5 ft. 9 in.	1.6 m / 5 ft. 4 in.	.9 m / 3 ft. 5 in.
Payload Capacity	9.1 kg / 20 lb.	9.1 kg / 20 lb.	9.1 kg / 20 lb.	9.1 kg / 20 lb.
Approximate Weight	16 kg / 36 lb.	13 kg / 29 lb.	9 kg / 19 lb.	7 kg / 15 lb.
Number of Sections	6	6	4	3
Tube Diameter	89-38 mm / 3.5 in. - 1.5 in.	89-38 mm / 3.5 in. - 1.5 in.	89-57 mm / 3.5 in. - 2.25 in.	89-67 mm / 3.5 in. - 2.625 in.
Collar Type	Friction Locking	Friction Locking	Friction Locking	Friction Locking
Finish	Black Anodize, MIL-A-8625, Type II, Class 2	Black Anodize, MIL-A-8625, Type II, Class 2	Black Anodize, MIL-A-8625, Type II, Class 2	Black Anodize, MIL-A-8625, Type II, Class 2

# CONTACT YOUR SALES REPRESENTATIVE TODAY

The Will-Burt Company, headquartered in Orrville, Ohio, USA, is the world's premier manufacturer of mobile telescoping masts, towers and pan and tilt positioners. We offer virtually every payload elevation and integration solution from the top brands; Will-Burt, GEROH, Integrated Tower Systems (ITS) and MAD – for defense, government, first responders, cellular, broadcast, energy production and other markets. Will-Burt also offers contract manufacturing, metal fabrication, powder-coating, and rapid prototyping services. All Will-Burt Company manufacturing locations are backed by a certified ISO 9001:2015 Quality Management System. Incorporated in 1918, Will-Burt is 100% employee-owned and is classified as a small business.



www.willburt.com

## UNITED STATES WORLD HEADQUARTERS

401 Collins Blvd  
Orrville, OH USA 44667  
Telephone: 330.682.7015  
Mast Customer Service: 330.684.4000  
Fax: 330.684.1190  
Email: info@willburt.com

## WILL-BURT EU

Unit 5b, Station Approach  
Four Marks, Alton Hampshire,  
GU34 5HN, United Kingdom  
Telephone: +44 (0) 1403 265532  
Fax: +44 (0) 1403 259072

## EUROPE GEROH

A Will-Burt Company  
Fischergasse 25  
91344 Waischenfeld, Germany  
Telephone: +49-9202-18-0  
Fax: +49-9202-18-11  
Email: info@geroh.com

## ASIA SINGAPORE SALES OFFICE

1 Fullerton Road,  
#02-01 One Fullerton,  
Singapore 049213  
Telephone: +65 6832 5689  
Fax: +65 6722 0664

## INTEGRATED TOWER SYSTEMS

A WILL-BURT COMPANY  
2703 Dawson Road, Tulsa, OK 74110  
Telephone: 800.850.8535  
Fax: 918.749.8537  
Email: programs@itstowers.com

## WILL-BURT TURKEY

2118. Cad. No: 4, B101  
Mustafa Kemal Mah. 06530 Çankaya  
Ankara, Turkey  
Telephone: +1 202 820 2184