

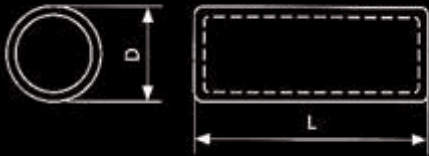


trigalight®

Gaseous tritium light sources (GTLs), various forms, contained, completely maintenance free. A true place and forget micro systems technology.

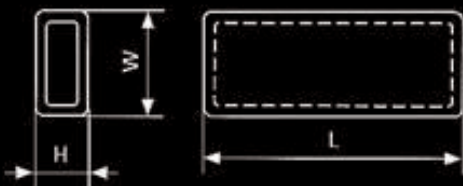
All trigalights with the dimension <1 mm are sold as watch lights. Please also refer to our watch lights product group

trigalight® round [mm]



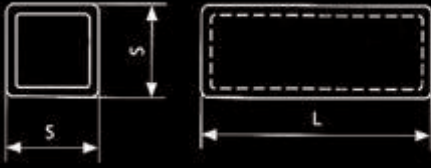
D	tolerance +/-	L min.	tolerance +/-	L max.	tolerance +/-
0.50	0.025	1.30	0.10	6.50	0.15
0.65	0.05	2.50	0.15	10.00	0.30
0.90	0.05	2.50	0.15	15.00	0.30
1.00	0.05	2.50	0.20	15.00	0.30
1.30	0.05	3.00	0.20	15.00	0.30
1.50	0.05	3.00	0.20	15.00	0.30
2.00	0.10	4.00	0.30	30.00	0.50
2.50	0.10	6.00	0.30	30.00	0.50
3.00	0.10	8.00	0.30	40.00	0.50
4.00	0.10	10.00	1.00	60.00	1.00
5.00	0.20	15.00	1.50	95.00	1.50

trigalight® rectangular [mm]



W	tol. +/-	H	tol. +/-	L min.	tol. +/-	L max.	tol. +/-
2.00	0.20	0.70	0.15	6.00	0.30	30.00	0.50
3.00	0.20	0.90	0.15	8.00	0.30	30.00	0.50
4.00	0.25	1.50	0.20	8.00	0.30	40.00	1.00
4.00	0.25	2.00	0.20	12.00	0.30	70.00	0.50

trigalight® squared [mm]



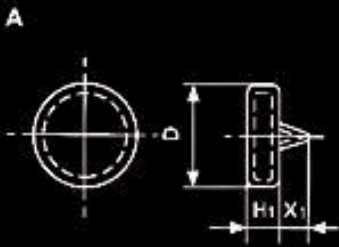
S	tolerance +/-	L min.	tolerance +/-	L max.	tolerance +/-
1.00	0.10	4.00	0.20	15.00	0.30
1.10	0.10	4.00	0.20	15.00	0.30
1.20	0.10	4.00	0.20	15.00	0.30
1.30	0.10	5.00	0.20	15.00	0.30
2.00	0.20	6.00	0.30	35.00	0.50
2.50	0.20	8.00	0.30	40.00	0.50

trigalight® arcs [mm]



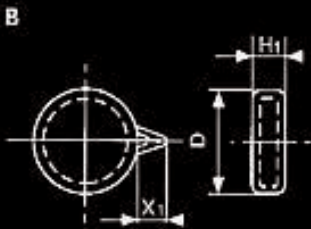
Section	Internal Radius [Ri]	Alpha
round, square, rectangular sizes:	depending on section size:	depending on section size and radius [Ri]
H= 1,5 mm to H = 7 mm	5 mm to 300 mm	45 deg. to 300 deg.

Disk with axial pip (A) [mm]



D	tolerance +/-	H1	tolerance +/-	X1	tolerance +/-
9.0	0.5	3.0	0.3	4.0	0.5
10.0	0.5	5.0	0.5	5.0	0.5
15.0	0.5	5.0	0.5	5.0	0.5
17.0	0.5	5.0	0.5	6.0	0.5
20.0	0.5	5.0	0.5	8.0	1.0
32.0	1.0	8.0	1.0	8.0	1.0

Disk with radial pip (B) [mm]



D	tolerance +/-	H1	tolerance +/-	X1	tolerance +/-
10.0	0.3	4.0	0.3	4.0	0.5
15.0	0.5	4.8	0.3	5.0	0.5
22.0	0.5	6.0	0.5	5.0	0.5
60.0	1.0	10.0	1.0	5.5	0.5

Spheres [mm]



D	tolerance +/-	X1	tolerance +/-
11.0	0.3	5.0	0.75
15.0	0.5	5.0	0.75
18.0	0.5	6.0	1.00